



Shot Chart

BRA 22 vs 83 ESP

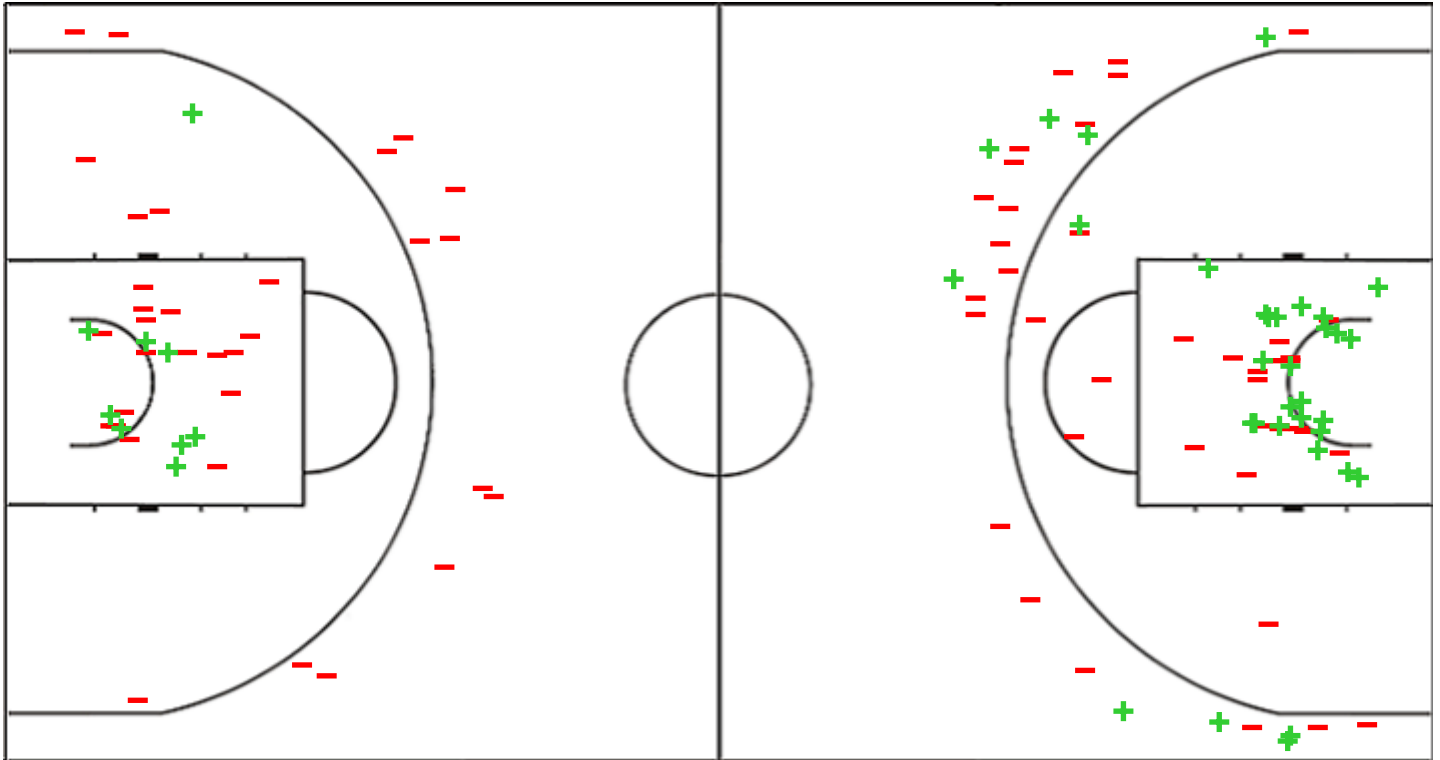
(7-22, 9-24, 4-22, 2-15)

Scoring by 5 min intervals:

| | Q1 | | Q2 | | Q3 | | Q4 | |
|-----|----|----|----|----|----|----|----|----|
| BRA | 2 | 7 | 10 | 16 | 18 | 20 | 20 | 22 |
| ESP | 14 | 22 | 31 | 46 | 59 | 68 | 78 | 83 |

BRA - Brazil

ESP - Spain



| BRA | M / A | % |
|-------------|--------|----|
| Fied Goals | 9 / 42 | 21 |
| 2 Points | 9 / 30 | 30 |
| 3 Points | 0 / 12 | 0 |
| Free Throws | 4 / 12 | 33 |

| % | M / A | ESP |
|----|---------|-------------|
| 45 | 33 / 74 | Fied Goals |
| 52 | 24 / 46 | 2 Points |
| 32 | 9 / 28 | 3 Points |
| 62 | 8 / 13 | Free Throws |

GLOBAL PARTNERS





Shot Chart

BRA 22 vs 83 ESP

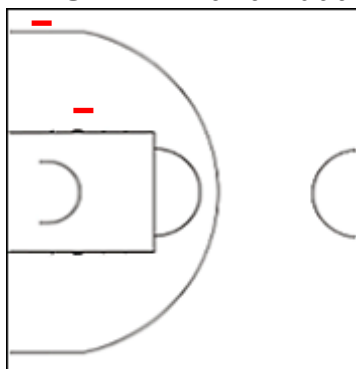
(7-22, 9-24, 4-22, 2-15)

Scoring by 5 min intervals:

| | Q1 | | Q2 | | Q3 | | Q4 | |
|-----|----|----|----|----|----|----|----|----|
| BRA | 2 | 7 | 10 | 16 | 18 | 20 | 20 | 22 |
| ESP | 14 | 22 | 31 | 46 | 59 | 68 | 78 | 83 |

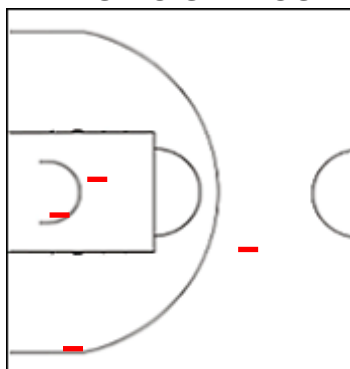
BRA - Brazil

2 AUTRAN Maria Eduarda



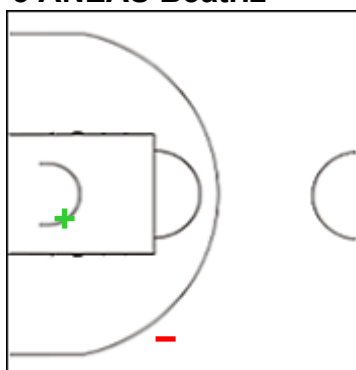
| | M / A | % |
|-------------|-------|---|
| Fied Goals | 0 / 2 | 0 |
| 2 Points | 0 / 1 | 0 |
| 3 Points | 0 / 1 | 0 |
| Free Throws | 0 / 0 | 0 |

4 DIAS DO SANTOS Raiane



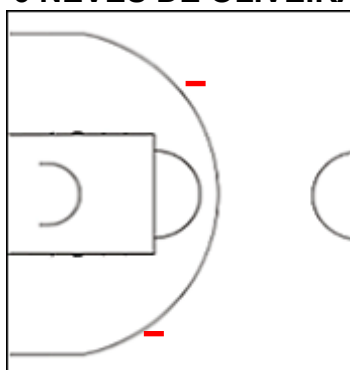
| | M / A | % |
|-------------|-------|---|
| Fied Goals | 0 / 4 | 0 |
| 2 Points | 0 / 3 | 0 |
| 3 Points | 0 / 1 | 0 |
| Free Throws | 0 / 0 | 0 |

5 ANEAS Beatriz



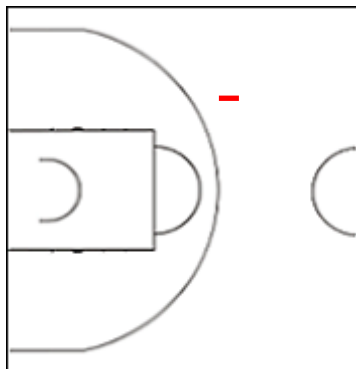
| | M / A | % |
|-------------|-------|-----|
| Fied Goals | 1 / 2 | 50 |
| 2 Points | 1 / 1 | 100 |
| 3 Points | 0 / 1 | 0 |
| Free Throws | 0 / 0 | 0 |

6 NEVES DE OLIVEIRA



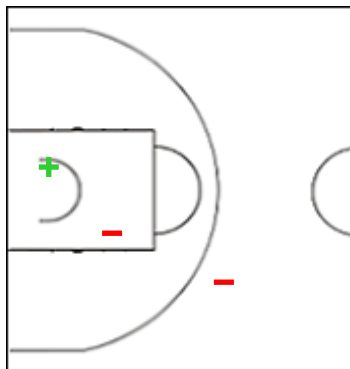
| | M / A | % |
|-------------|-------|---|
| Fied Goals | 0 / 2 | 0 |
| 2 Points | 0 / 0 | 0 |
| 3 Points | 0 / 2 | 0 |
| Free Throws | 0 / 0 | 0 |

7 DELBONI DA SILVA Allanis



| | M / A | % |
|-------------|-------|---|
| Fied Goals | 0 / 1 | 0 |
| 2 Points | 0 / 0 | 0 |
| 3 Points | 0 / 1 | 0 |
| Free Throws | 0 / 0 | 0 |

11 RECHEMBAK Leticia



| | M / A | % |
|-------------|-------|----|
| Fied Goals | 1 / 3 | 33 |
| 2 Points | 1 / 2 | 50 |
| 3 Points | 0 / 1 | 0 |
| Free Throws | 0 / 0 | 0 |



Shot Chart

BRA 22 vs 83 ESP

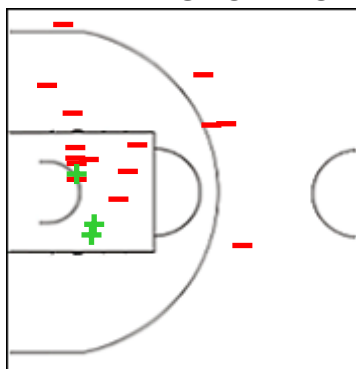
(7-22, 9-24, 4-22, 2-15)

Scoring by 5 min intervals:

| | Q1 | | Q2 | | Q3 | | Q4 | |
|-----|----|----|----|----|----|----|----|----|
| BRA | 2 | 7 | 10 | 16 | 18 | 20 | 20 | 22 |
| ESP | 14 | 22 | 31 | 46 | 59 | 68 | 78 | 83 |

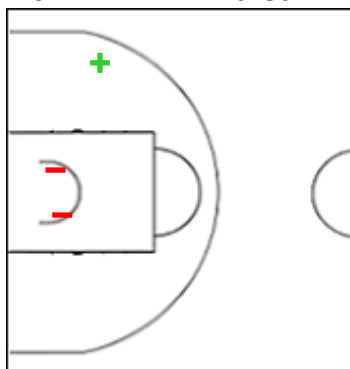
BRA - Brazil

12 FRANCISCO DE OLIVEIRA



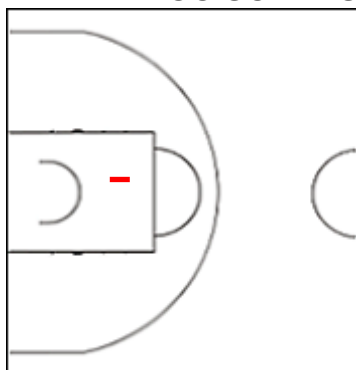
| | M / A | % |
|-------------|--------|----|
| Fied Goals | 3 / 18 | 17 |
| 2 Points | 3 / 13 | 23 |
| 3 Points | 0 / 5 | 0 |
| Free Throws | 0 / 4 | 0 |

13 PEREIRA Maisa



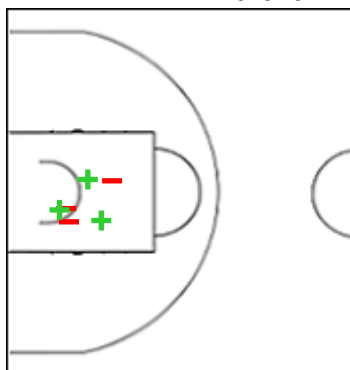
| | M / A | % |
|-------------|-------|----|
| Fied Goals | 1 / 3 | 33 |
| 2 Points | 1 / 3 | 33 |
| 3 Points | 0 / 0 | 0 |
| Free Throws | 1 / 2 | 50 |

14 D'ARRIGO SOARES Bianca



| | M / A | % |
|-------------|-------|---|
| Fied Goals | 0 / 1 | 0 |
| 2 Points | 0 / 1 | 0 |
| 3 Points | 0 / 0 | 0 |
| Free Throws | 0 / 0 | 0 |

21 PEREIRA Maiara



| | M / A | % |
|-------------|-------|----|
| Fied Goals | 3 / 6 | 50 |
| 2 Points | 3 / 6 | 50 |
| 3 Points | 0 / 0 | 0 |
| Free Throws | 3 / 6 | 50 |

GLOBAL PARTNERS





Shot Chart

BRA 22 vs 83 ESP

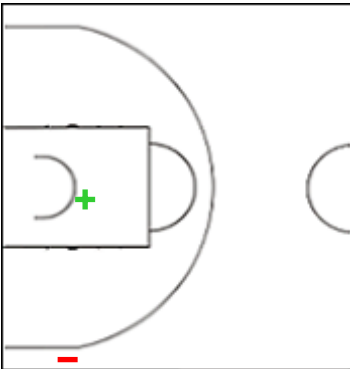
(7-22, 9-24, 4-22, 2-15)

Scoring by 5 min intervals:

| | Q1 | | Q2 | | Q3 | | Q4 | |
|-----|----|----|----|----|----|----|----|----|
| BRA | 2 | 7 | 10 | 16 | 18 | 20 | 20 | 22 |
| ESP | 14 | 22 | 31 | 46 | 59 | 68 | 78 | 83 |

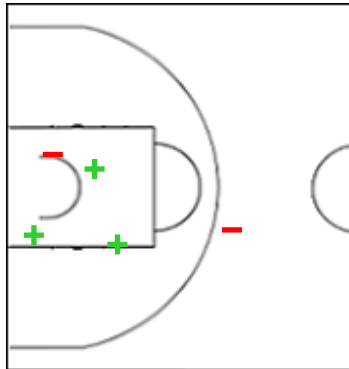
ESP - Spain

4 DEMBELE TRAORE Mama



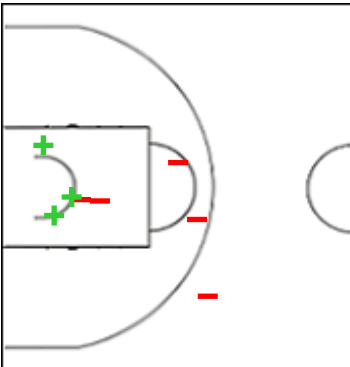
| | M / A | % |
|-------------|-------|-----|
| Fied Goals | 1 / 2 | 50 |
| 2 Points | 1 / 1 | 100 |
| 3 Points | 0 / 1 | 0 |
| Free Throws | 0 / 0 | 0 |

5 LAMANA LLOBERA Laia



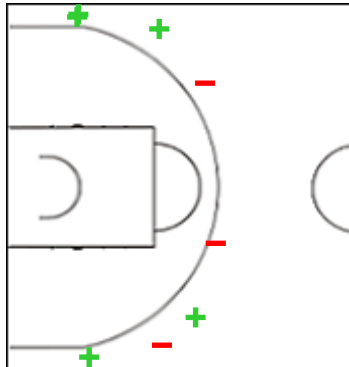
| | M / A | % |
|-------------|-------|----|
| Fied Goals | 3 / 5 | 60 |
| 2 Points | 3 / 4 | 75 |
| 3 Points | 0 / 1 | 0 |
| Free Throws | 0 / 0 | 0 |

7 CONTELL Claudia



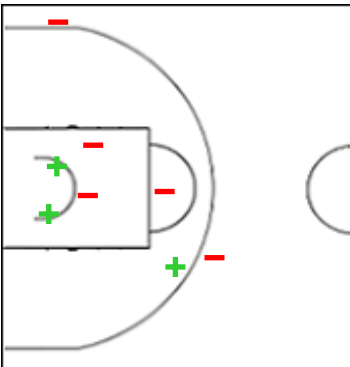
| | M / A | % |
|-------------|-------|-----|
| Fied Goals | 3 / 8 | 38 |
| 2 Points | 3 / 7 | 43 |
| 3 Points | 0 / 1 | 0 |
| Free Throws | 2 / 2 | 100 |

8 DE SANTIAGO OTERO



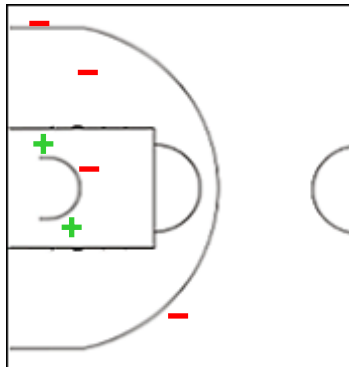
| | M / A | % |
|-------------|-------|----|
| Fied Goals | 5 / 8 | 63 |
| 2 Points | 0 / 0 | 0 |
| 3 Points | 5 / 8 | 63 |
| Free Throws | 0 / 0 | 0 |

9 SANCHEZ IZNAJAR Gisela



| | M / A | % |
|-------------|-------|----|
| Fied Goals | 3 / 8 | 38 |
| 2 Points | 3 / 6 | 50 |
| 3 Points | 0 / 2 | 0 |
| Free Throws | 1 / 2 | 50 |

10 BUENAVIDA ESTEVEZ Elena



| | M / A | % |
|-------------|-------|----|
| Fied Goals | 2 / 6 | 33 |
| 2 Points | 2 / 4 | 50 |
| 3 Points | 0 / 2 | 0 |
| Free Throws | 1 / 3 | 33 |

GLOBAL PARTNERS





Shot Chart

BRA 22 vs 83 ESP

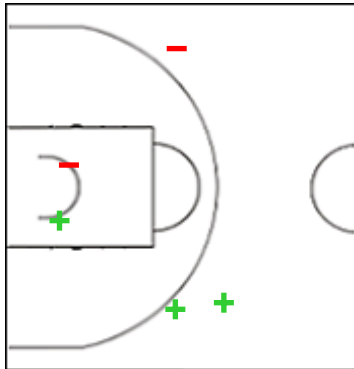
(7-22, 9-24, 4-22, 2-15)

Scoring by 5 min intervals:

| | Q1 | | Q2 | | Q3 | | Q4 | |
|------------|----|----|----|----|----|----|----|----|
| BRA | 2 | 7 | 10 | 16 | 18 | 20 | 20 | 22 |
| ESP | 14 | 22 | 31 | 46 | 59 | 68 | 78 | 83 |

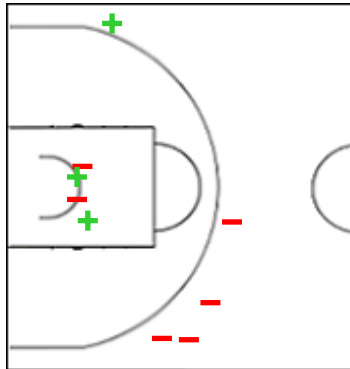
ESP - Spain

12 ALARCON OTERO Txell



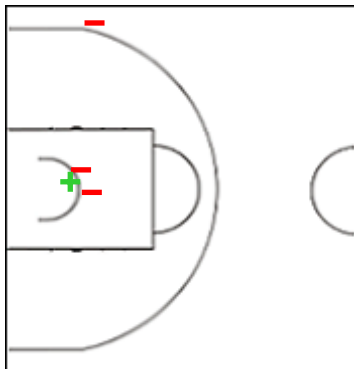
| | M / A | % |
|-------------|-------|-----|
| Fied Goals | 3 / 5 | 60 |
| 2 Points | 1 / 2 | 50 |
| 3 Points | 2 / 3 | 67 |
| Free Throws | 2 / 2 | 100 |

13 MORALES ROMERO Marta



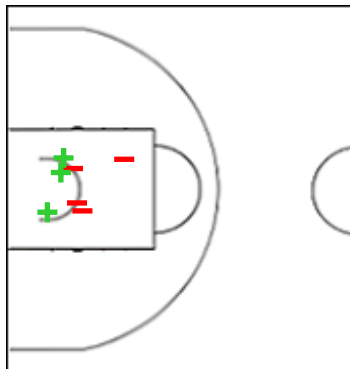
| | M / A | % |
|-------------|-------|-----|
| Fied Goals | 3 / 9 | 33 |
| 2 Points | 2 / 4 | 50 |
| 3 Points | 1 / 5 | 20 |
| Free Throws | 1 / 1 | 100 |

14 GARFELLA Eiba



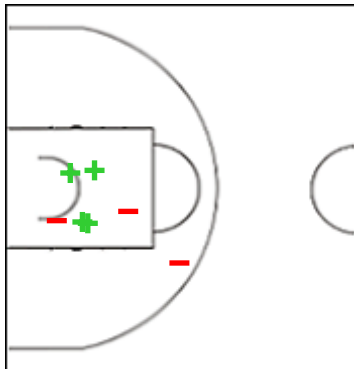
| | M / A | % |
|-------------|-------|----|
| Fied Goals | 1 / 4 | 25 |
| 2 Points | 1 / 3 | 33 |
| 3 Points | 0 / 1 | 0 |
| Free Throws | 0 / 0 | 0 |

15 CAPEL CILLA Gedna



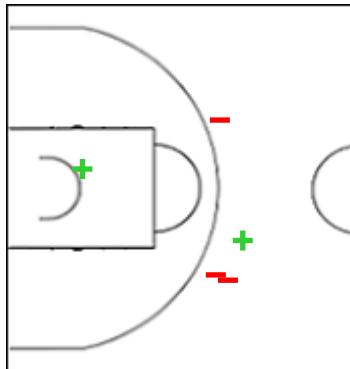
| | M / A | % |
|-------------|-------|----|
| Fied Goals | 3 / 7 | 43 |
| 2 Points | 3 / 7 | 43 |
| 3 Points | 0 / 0 | 0 |
| Free Throws | 1 / 2 | 50 |

16 GARCIA MATEO Marta



| | M / A | % |
|-------------|-------|----|
| Fied Goals | 4 / 7 | 57 |
| 2 Points | 4 / 7 | 57 |
| 3 Points | 0 / 0 | 0 |
| Free Throws | 0 / 0 | 0 |

17 SUAREZ RODRIGUEZ Marta



| | M / A | % |
|-------------|-------|-----|
| Fied Goals | 2 / 5 | 40 |
| 2 Points | 1 / 1 | 100 |
| 3 Points | 1 / 4 | 25 |
| Free Throws | 0 / 1 | 0 |

GLOBAL PARTNERS





Shot Chart

BRA 22 vs 83 ESP

(7-22, 9-24, 4-22, 2-15)

Scoring by 5 min intervals:

| | Q1 | | Q2 | | Q3 | | Q4 | |
|-----|----|----|----|----|----|----|----|----|
| BRA | 2 | 7 | 10 | 16 | 18 | 20 | 20 | 22 |
| ESP | 14 | 22 | 31 | 46 | 59 | 68 | 78 | 83 |

BRA - Brazil

ESP - Spain



| | M / A | % |
|-------------|--------|----|
| Fied Goals | 9 / 42 | 21 |
| 2 Points | 9 / 30 | 30 |
| 3 Points | 0 / 12 | 0 |
| Free Throws | 4 / 12 | 33 |

| % | M / A | |
|----|---------|-------------|
| 45 | 33 / 74 | Fied Goals |
| 52 | 24 / 46 | 2 Points |
| 32 | 9 / 28 | 3 Points |
| 62 | 8 / 13 | Free Throws |

GLOBAL PARTNERS

