



Shot Chart

TPE 42 vs 111 JPN

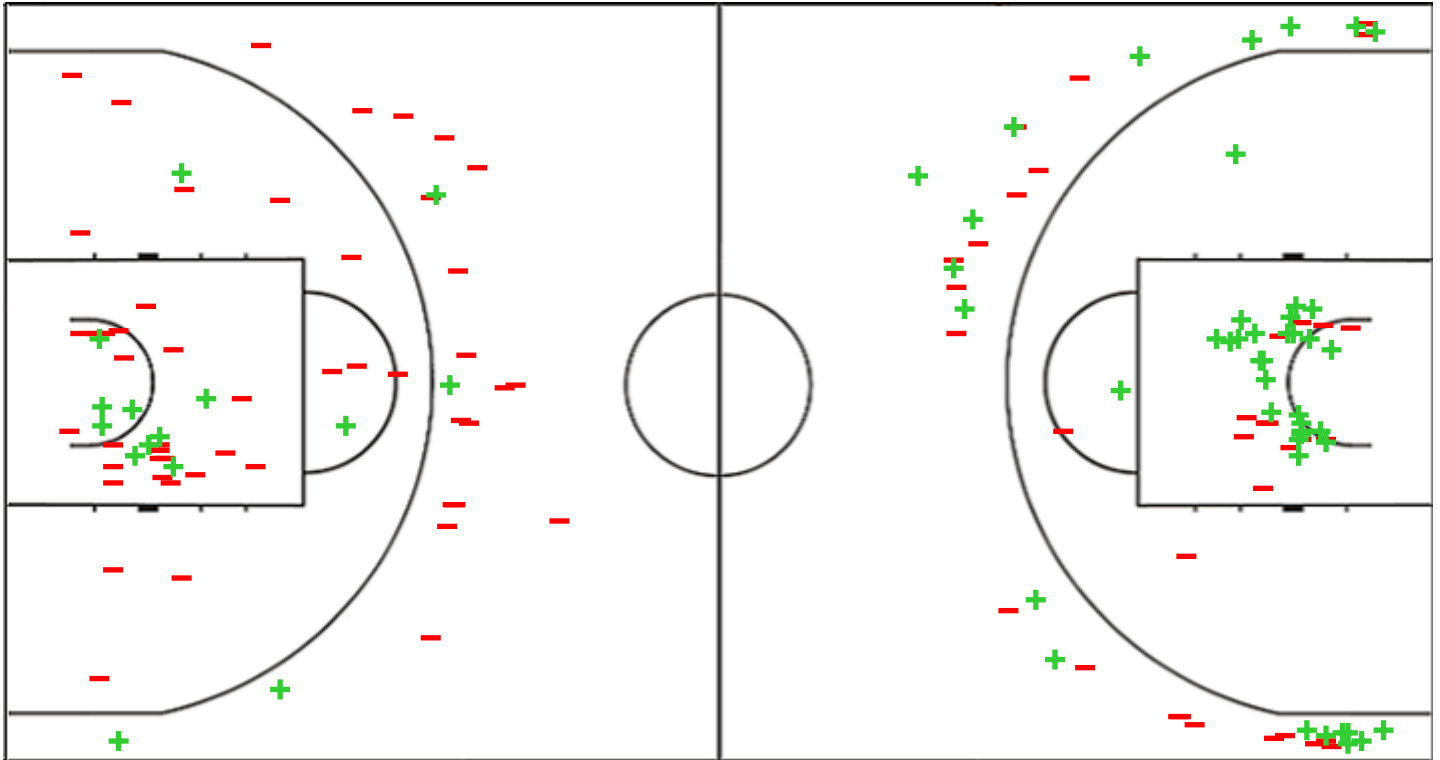
(10-42, 6-29, 17-14, 9-26)

Scoring by 5 min intervals:

	Q1		Q2		Q3		Q4	
TPE	3	10	16	16	29	33	41	42
JPN	26	42	55	71	76	85	95	111

TPE - Chinese Taipei

JPN - Japan



TPE	M / A	%
Fied Goals	15 / 65	23
2 Points	11 / 44	25
3 Points	4 / 21	19
Free Throws	8 / 10	80

%	M / A	JPN
57	45 / 79	Fied Goals
63	26 / 41	2 Points
50	19 / 38	3 Points
67	2 / 3	Free Throws

GLOBAL PARTNERS





Shot Chart

TPE 42 vs 111 JPN

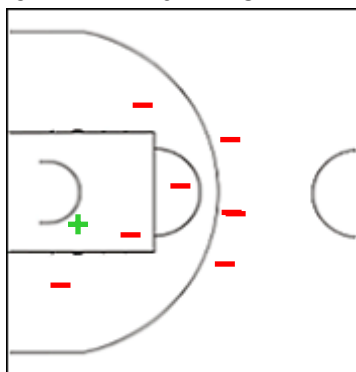
(10-42, 6-29, 17-14, 9-26)

Scoring by 5 min intervals:

	Q1		Q2		Q3		Q4	
TPE	3	10	16	16	29	33	41	42
JPN	26	42	55	71	76	85	95	111

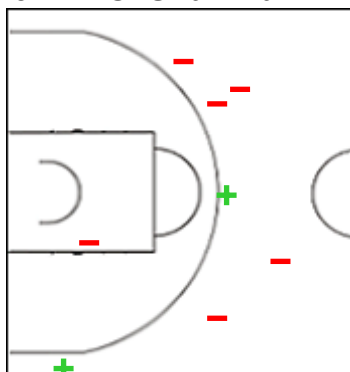
TPE - Chinese Taipei

0 CHEN Yu Chieh



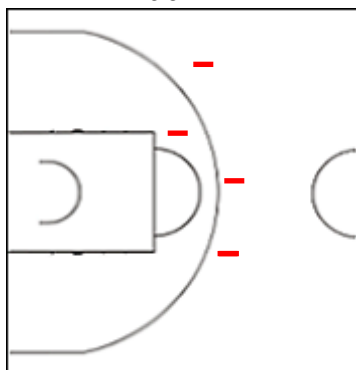
	M / A	%
Fied Goals	1 / 9	11
2 Points	1 / 5	20
3 Points	0 / 4	0
Free Throws	3 / 4	75

3 TANG Shu Chun



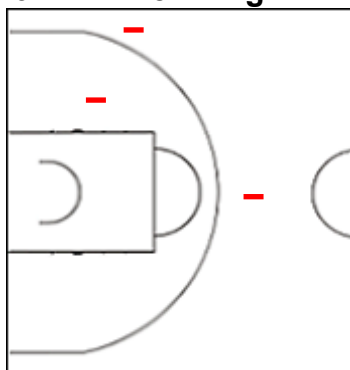
	M / A	%
Fied Goals	2 / 8	25
2 Points	0 / 1	0
3 Points	2 / 7	29
Free Throws	0 / 0	0

4 LI Yi Hua



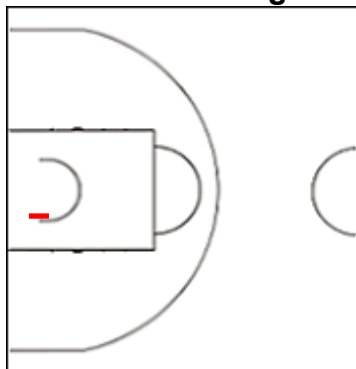
	M / A	%
Fied Goals	0 / 5	0
2 Points	0 / 1	0
3 Points	0 / 4	0
Free Throws	0 / 0	0

6 LIEN Wen Ling



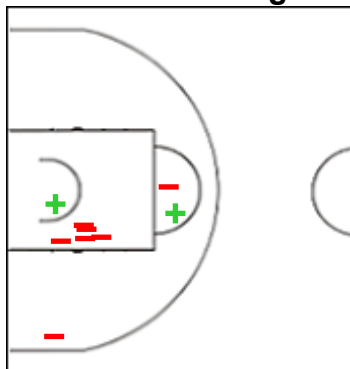
	M / A	%
Fied Goals	0 / 3	0
2 Points	0 / 1	0
3 Points	0 / 2	0
Free Throws	0 / 0	0

7 CHAO Yun Feng



	M / A	%
Fied Goals	0 / 1	0
2 Points	0 / 1	0
3 Points	0 / 0	0
Free Throws	0 / 0	0

9 CHEN Chih Ying



	M / A	%
Fied Goals	2 / 9	22
2 Points	2 / 9	22
3 Points	0 / 0	0
Free Throws	1 / 2	50

GLOBAL PARTNERS





Shot Chart

TPE 42 vs 111 JPN

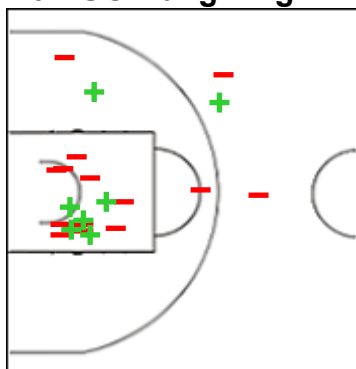
(10-42, 6-29, 17-14, 9-26)

Scoring by 5 min intervals:

	Q1		Q2		Q3		Q4	
TPE	3	10	16	16	29	33	41	42
JPN	26	42	55	71	76	85	95	111

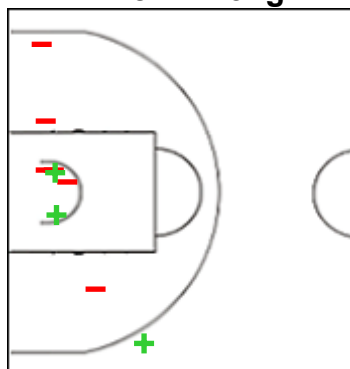
TPE - Chinese Taipei

10 KUO Hung Ting



	M / A	%
Fied Goals	7 / 21	33
2 Points	6 / 18	33
3 Points	1 / 3	33
Free Throws	2 / 2	100

21 YEH Jhih Tong



	M / A	%
Fied Goals	3 / 9	33
2 Points	2 / 8	25
3 Points	1 / 1	100
Free Throws	2 / 2	100

GLOBAL PARTNERS





Shot Chart

TPE 42 vs 111 JPN

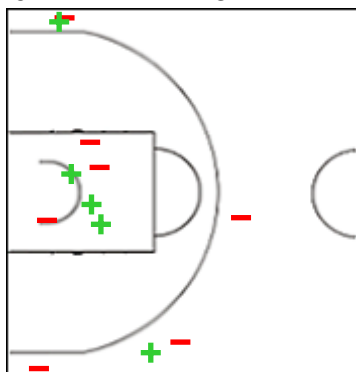
(10-42, 6-29, 17-14, 9-26)

Scoring by 5 min intervals:

	Q1		Q2		Q3		Q4	
TPE	3	10	16	16	29	33	41	42
JPN	26	42	55	71	76	85	95	111

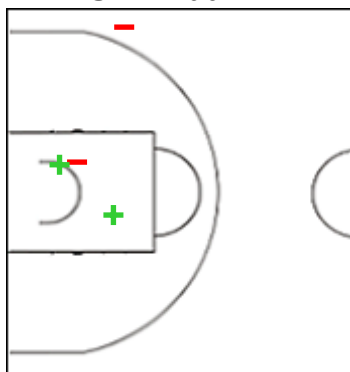
JPN - Japan

0 YAMADA Aoi



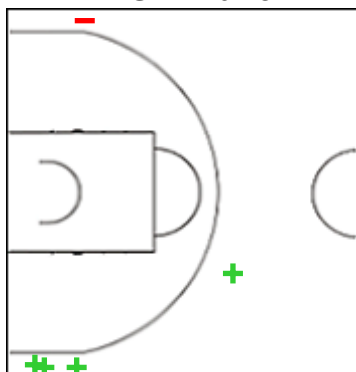
	M / A	%
Fied Goals	5 / 12	42
2 Points	3 / 6	50
3 Points	2 / 6	33
Free Throws	0 / 0	0

1 EMURA Yua



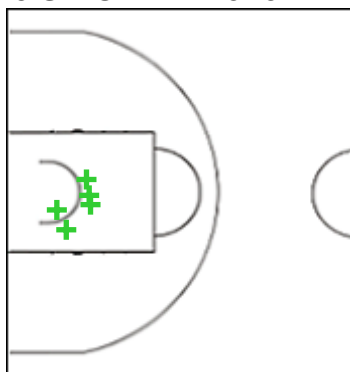
	M / A	%
Fied Goals	2 / 4	50
2 Points	2 / 3	67
3 Points	0 / 1	0
Free Throws	1 / 1	100

2 HAYASHI Maho



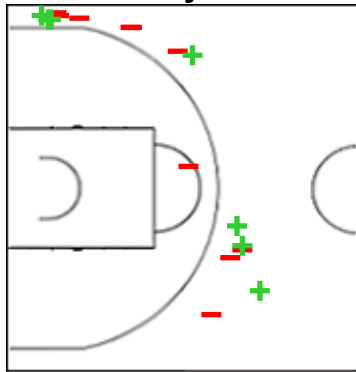
	M / A	%
Fied Goals	4 / 5	80
2 Points	0 / 0	0
3 Points	4 / 5	80
Free Throws	0 / 0	0

5 SHIOTANI Kokomi



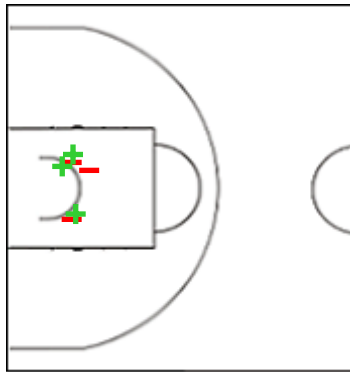
	M / A	%
Fied Goals	5 / 5	100
2 Points	5 / 5	100
3 Points	0 / 0	0
Free Throws	1 / 1	100

9 OGITA Miyu



	M / A	%
Fied Goals	7 / 17	41
2 Points	0 / 2	0
3 Points	7 / 15	47
Free Throws	0 / 0	0

10 TATEYAMA Mona



	M / A	%
Fied Goals	3 / 6	50
2 Points	3 / 6	50
3 Points	0 / 0	0
Free Throws	0 / 1	0



Shot Chart

TPE 42 vs 111 JPN

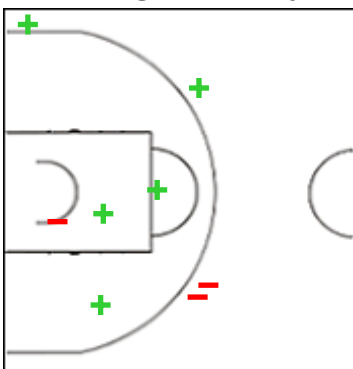
(10-42, 6-29, 17-14, 9-26)

Scoring by 5 min intervals:

	Q1		Q2		Q3		Q4	
TPE	3	10	16	16	29	33	41	42
JPN	26	42	55	71	76	85	95	111

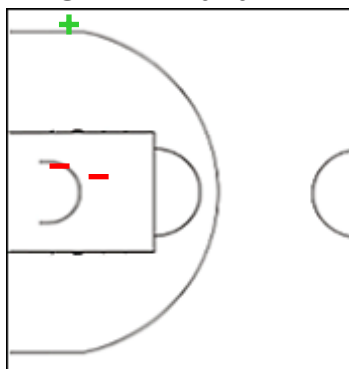
JPN - Japan

14 HIRASHITA Aika



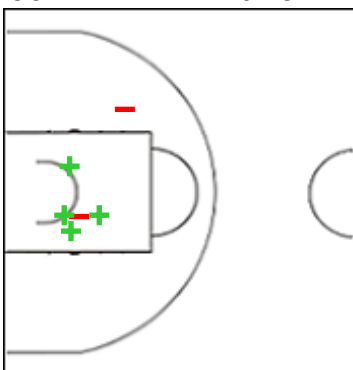
	M / A	%
Fied Goals	5 / 8	63
2 Points	3 / 4	75
3 Points	2 / 4	50
Free Throws	0 / 0	0

17 SANTA Nana



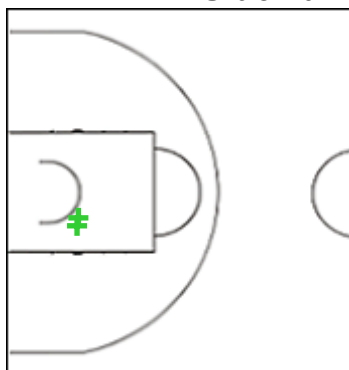
	M / A	%
Fied Goals	1 / 3	33
2 Points	0 / 2	0
3 Points	1 / 1	100
Free Throws	0 / 0	0

36 AWATANI Maho



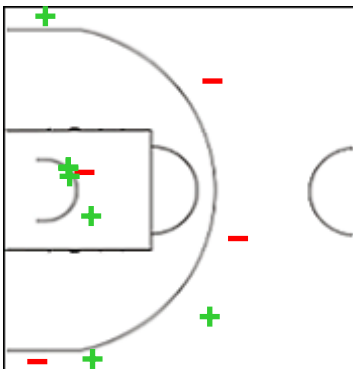
	M / A	%
Fied Goals	4 / 6	67
2 Points	4 / 6	67
3 Points	0 / 0	0
Free Throws	0 / 0	0

42 TANAKA Ufuoma



	M / A	%
Fied Goals	2 / 2	100
2 Points	2 / 2	100
3 Points	0 / 0	0
Free Throws	0 / 0	0

75 SATO Takako



	M / A	%
Fied Goals	7 / 11	64
2 Points	4 / 5	80
3 Points	3 / 6	50
Free Throws	0 / 0	0



Shot Chart

TPE 42 vs 111 JPN

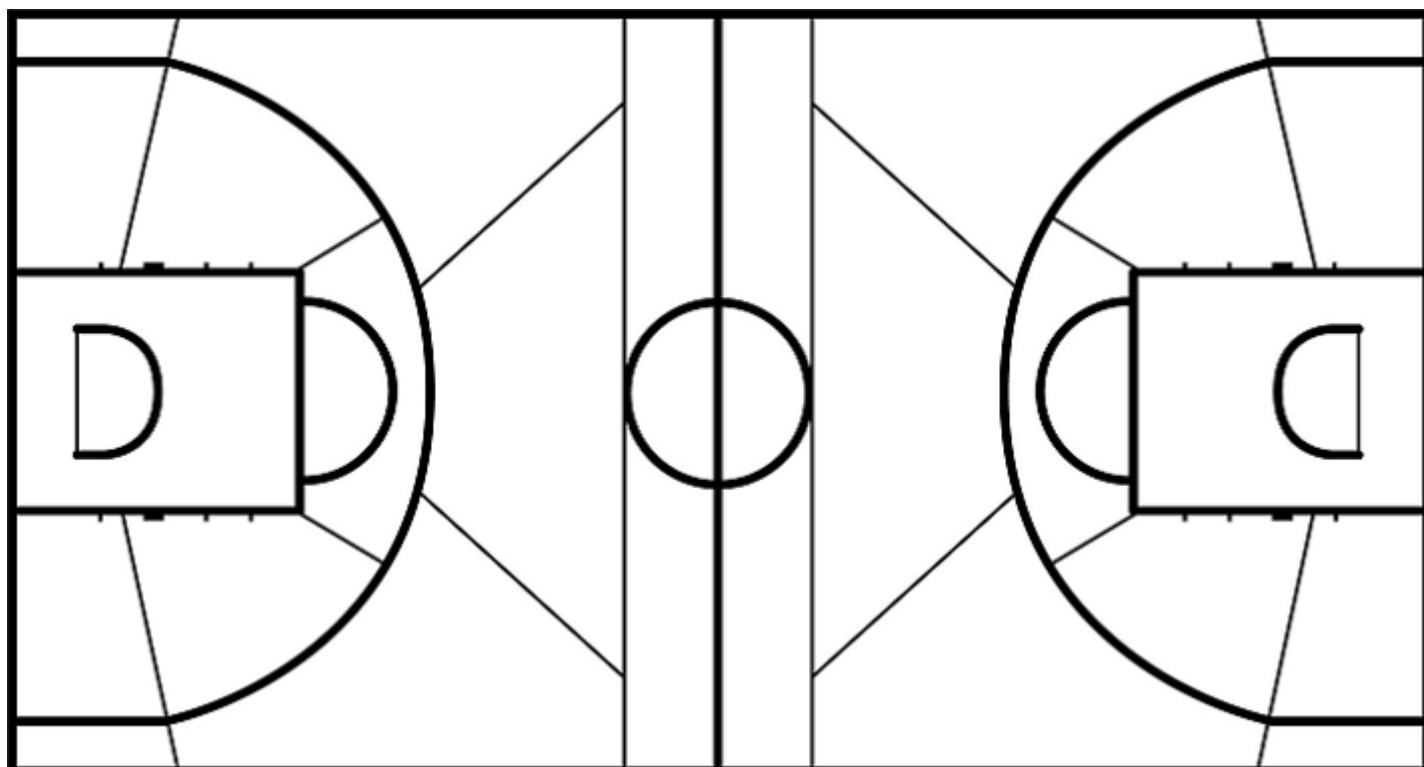
(10-42, 6-29, 17-14, 9-26)

Scoring by 5 min intervals:

	Q1		Q2		Q3		Q4	
TPE	3	10	16	16	29	33	41	42
JPN	26	42	55	71	76	85	95	111

TPE - Chinese Taipei

JPN - Japan



	M / A	%
Fied Goals	15 / 65	23
2 Points	11 / 44	25
3 Points	4 / 21	19
Free Throws	8 / 10	80

%	M / A	
57	45 / 79	Fied Goals
63	26 / 41	2 Points
50	19 / 38	3 Points
67	2 / 3	Free Throws

GLOBAL PARTNERS

