



Shot Chart

ESP 63 vs 66 CZE

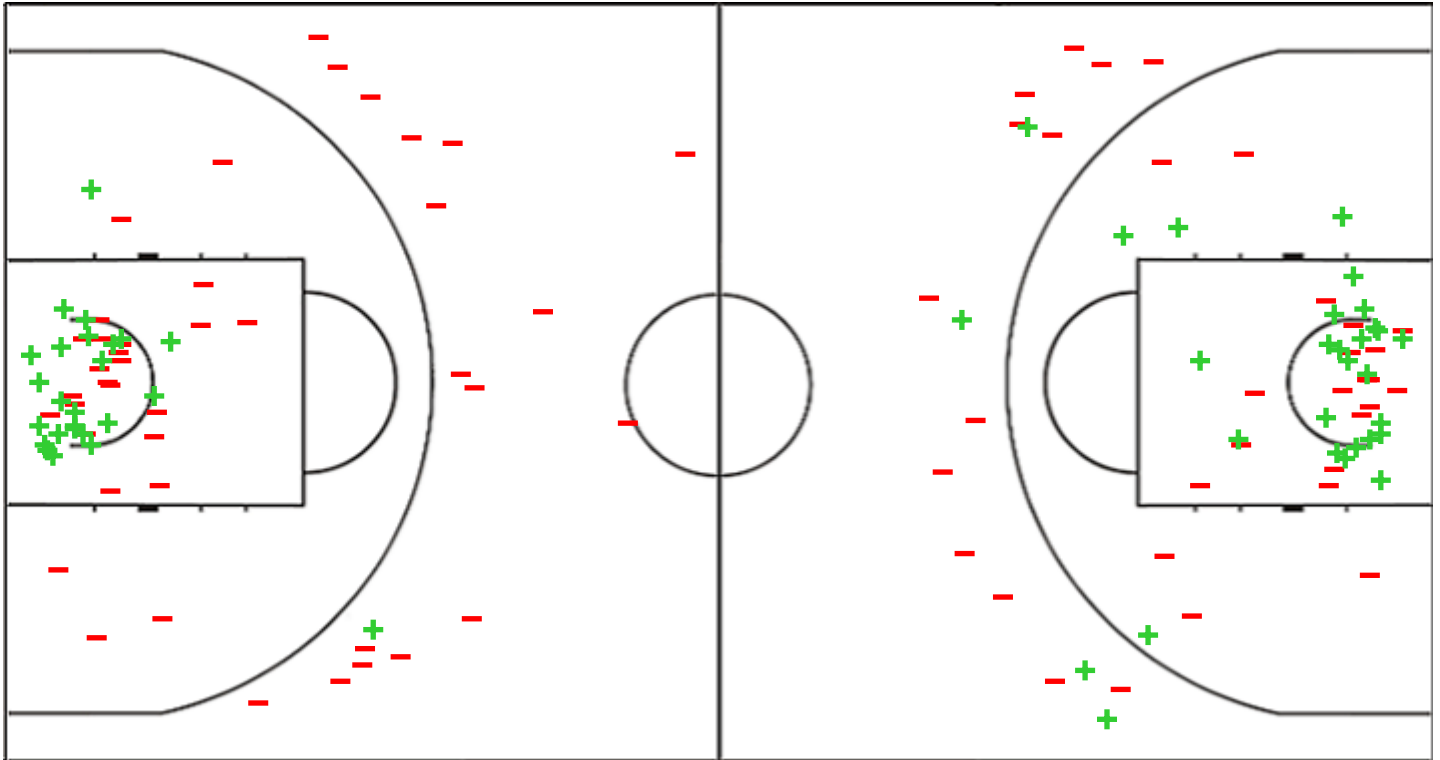
(16-16, 16-18, 15-18, 16-14)

Scoring by 5 min intervals:

| | Q1 | | Q2 | | Q3 | | Q4 | |
|-----|----|----|----|----|----|----|----|----|
| ESP | 9 | 16 | 30 | 32 | 40 | 47 | 57 | 63 |
| CZE | 2 | 16 | 21 | 34 | 43 | 52 | 60 | 66 |

ESP - Spain

CZE - Czech Republic



| ESP | M / A | % |
|-------------|---------|----|
| Fied Goals | 25 / 67 | 37 |
| 2 Points | 24 / 49 | 49 |
| 3 Points | 1 / 18 | 6 |
| Free Throws | 12 / 14 | 86 |

| % | M / A | CZE |
|----|---------|-------------|
| 46 | 29 / 63 | Fied Goals |
| 54 | 25 / 46 | 2 Points |
| 24 | 4 / 17 | 3 Points |
| 50 | 4 / 8 | Free Throws |

GLOBAL PARTNERS





Shot Chart

ESP 63 vs 66 CZE

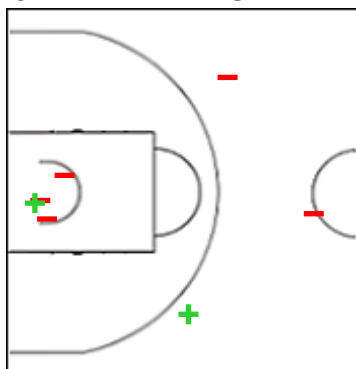
(16-16, 16-18, 15-18, 16-14)

Scoring by 5 min intervals:

| | Q1 | | Q2 | | Q3 | | Q4 | |
|-----|----|----|----|----|----|----|----|----|
| ESP | 9 | 16 | 30 | 32 | 40 | 47 | 57 | 63 |
| CZE | 2 | 16 | 21 | 34 | 43 | 52 | 60 | 66 |

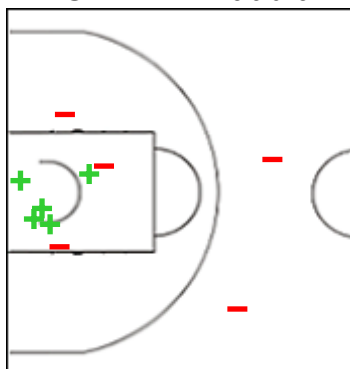
ESP - Spain

5 LAMANA LLOBERA Laia



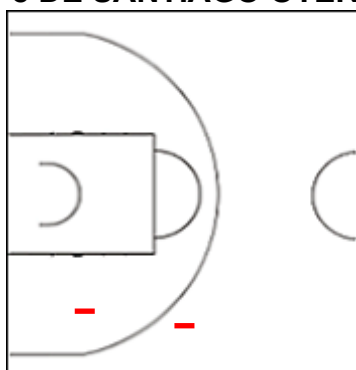
| | M / A | % |
|-------------|-------|----|
| Fied Goals | 2 / 7 | 29 |
| 2 Points | 1 / 4 | 25 |
| 3 Points | 1 / 3 | 33 |
| Free Throws | 0 / 0 | 0 |

7 CONTELL Claudia



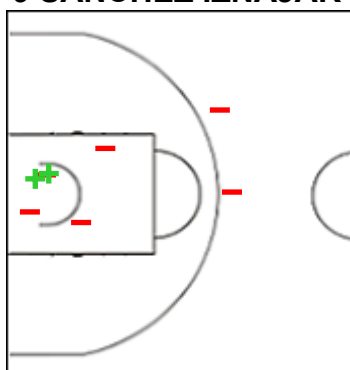
| | M / A | % |
|-------------|--------|-----|
| Fied Goals | 5 / 10 | 50 |
| 2 Points | 5 / 8 | 63 |
| 3 Points | 0 / 2 | 0 |
| Free Throws | 2 / 2 | 100 |

8 DE SANTIAGO OTERO



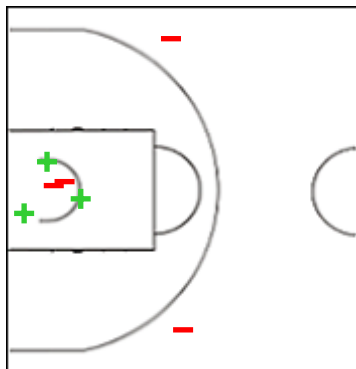
| | M / A | % |
|-------------|-------|-----|
| Fied Goals | 0 / 2 | 0 |
| 2 Points | 0 / 1 | 0 |
| 3 Points | 0 / 1 | 0 |
| Free Throws | 2 / 2 | 100 |

9 SANCHEZ IZNAJAR Gisela



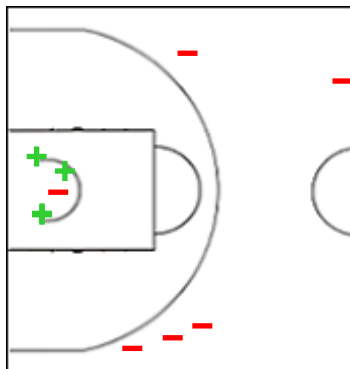
| | M / A | % |
|-------------|-------|----|
| Fied Goals | 2 / 8 | 25 |
| 2 Points | 2 / 6 | 33 |
| 3 Points | 0 / 2 | 0 |
| Free Throws | 0 / 0 | 0 |

10 BUENAVIDA ESTEVEZ Elena



| | M / A | % |
|-------------|-------|-----|
| Fied Goals | 3 / 7 | 43 |
| 2 Points | 3 / 5 | 60 |
| 3 Points | 0 / 2 | 0 |
| Free Throws | 4 / 4 | 100 |

12 ALARCON OTERO Txell



| | M / A | % |
|-------------|--------|----|
| Fied Goals | 4 / 10 | 40 |
| 2 Points | 4 / 5 | 80 |
| 3 Points | 0 / 5 | 0 |
| Free Throws | 0 / 0 | 0 |



Shot Chart

ESP 63 vs 66 CZE

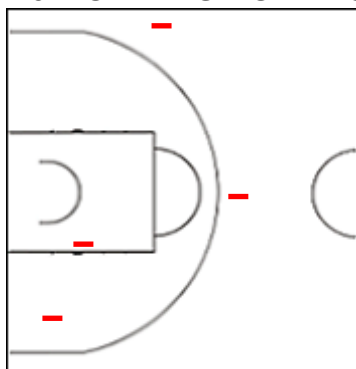
(16-16, 16-18, 15-18, 16-14)

Scoring by 5 min intervals:

| | Q1 | | Q2 | | Q3 | | Q4 | |
|-----|----|----|----|----|----|----|----|----|
| ESP | 9 | 16 | 30 | 32 | 40 | 47 | 57 | 63 |
| CZE | 2 | 16 | 21 | 34 | 43 | 52 | 60 | 66 |

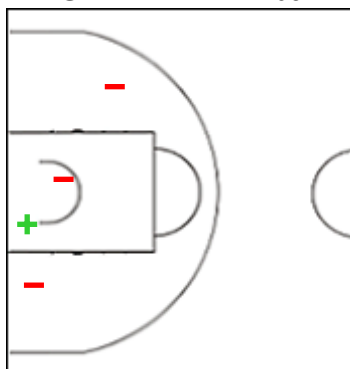
ESP - Spain

13 MORALES ROMERO Marta



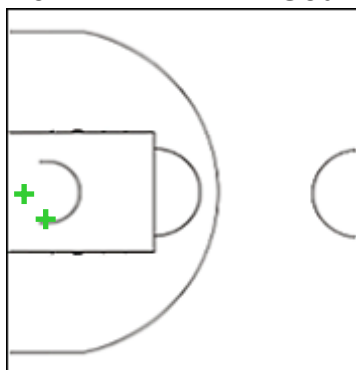
| | M / A | % |
|-------------|-------|---|
| Fied Goals | 0 / 4 | 0 |
| 2 Points | 0 / 2 | 0 |
| 3 Points | 0 / 2 | 0 |
| Free Throws | 0 / 0 | 0 |

14 GARFELLA Elba



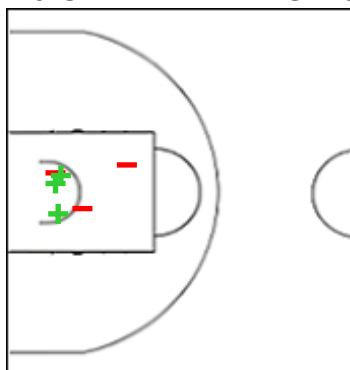
| | M / A | % |
|-------------|-------|----|
| Fied Goals | 1 / 4 | 25 |
| 2 Points | 1 / 4 | 25 |
| 3 Points | 0 / 0 | 0 |
| Free Throws | 1 / 2 | 50 |

15 CAPEL CILLA Gedna



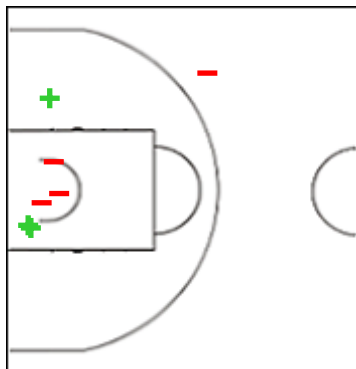
| | M / A | % |
|-------------|-------|-----|
| Fied Goals | 2 / 2 | 100 |
| 2 Points | 2 / 2 | 100 |
| 3 Points | 0 / 0 | 0 |
| Free Throws | 1 / 2 | 50 |

16 GARCIA MATEO Marta



| | M / A | % |
|-------------|-------|----|
| Fied Goals | 3 / 6 | 50 |
| 2 Points | 3 / 6 | 50 |
| 3 Points | 0 / 0 | 0 |
| Free Throws | 0 / 0 | 0 |

17 SUAREZ RODRIGUEZ Marta



| | M / A | % |
|-------------|-------|-----|
| Fied Goals | 3 / 7 | 43 |
| 2 Points | 3 / 6 | 50 |
| 3 Points | 0 / 1 | 0 |
| Free Throws | 2 / 2 | 100 |



Shot Chart

ESP 63 vs 66 CZE

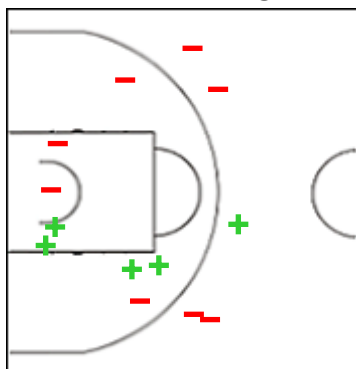
(16-16, 16-18, 15-18, 16-14)

Scoring by 5 min intervals:

| | Q1 | | Q2 | | Q3 | | Q4 | |
|-----|----|----|----|----|----|----|----|----|
| ESP | 9 | 16 | 30 | 32 | 40 | 47 | 57 | 63 |
| CZE | 2 | 16 | 21 | 34 | 43 | 52 | 60 | 66 |

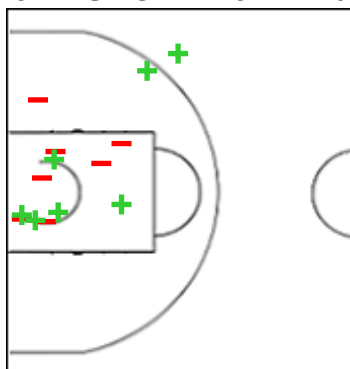
CZE - Czech Republic

1 ZEITHAMMEROVA Katerina



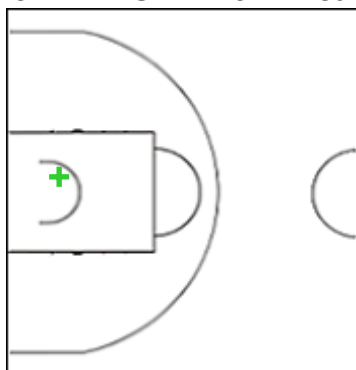
| | M / A | % |
|-------------|--------|----|
| Fied Goals | 5 / 13 | 38 |
| 2 Points | 4 / 8 | 50 |
| 3 Points | 1 / 5 | 20 |
| Free Throws | 0 / 3 | 0 |

3 PAUROVÁ Dominika



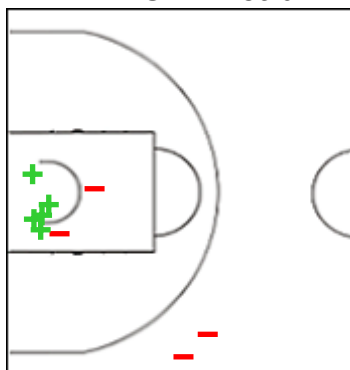
| | M / A | % |
|-------------|--------|-----|
| Fied Goals | 7 / 14 | 50 |
| 2 Points | 6 / 13 | 46 |
| 3 Points | 1 / 1 | 100 |
| Free Throws | 2 / 2 | 100 |

5 HYNKOVA Dominica



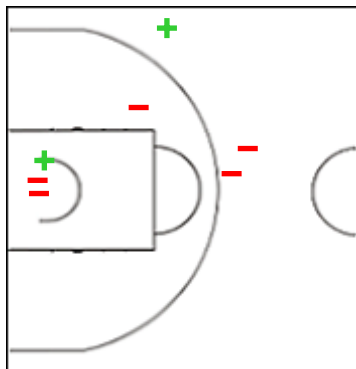
| | M / A | % |
|-------------|-------|-----|
| Fied Goals | 1 / 1 | 100 |
| 2 Points | 1 / 1 | 100 |
| 3 Points | 0 / 0 | 0 |
| Free Throws | 0 / 0 | 0 |

7 MALIKOVA Petra



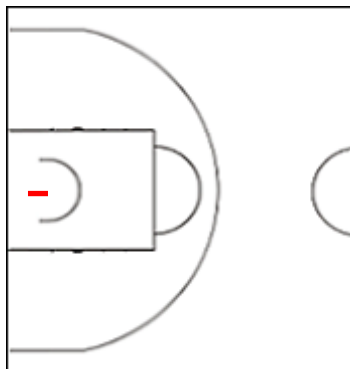
| | M / A | % |
|-------------|-------|-----|
| Fied Goals | 5 / 9 | 56 |
| 2 Points | 5 / 7 | 71 |
| 3 Points | 0 / 2 | 0 |
| Free Throws | 1 / 1 | 100 |

11 FISEROVA Simona



| | M / A | % |
|-------------|-------|----|
| Fied Goals | 2 / 7 | 29 |
| 2 Points | 1 / 4 | 25 |
| 3 Points | 1 / 3 | 33 |
| Free Throws | 1 / 2 | 50 |

13 STLOUKALOVA Klara



| | M / A | % |
|-------------|-------|---|
| Fied Goals | 0 / 1 | 0 |
| 2 Points | 0 / 1 | 0 |
| 3 Points | 0 / 0 | 0 |
| Free Throws | 0 / 0 | 0 |



Shot Chart

ESP 63 vs 66 CZE

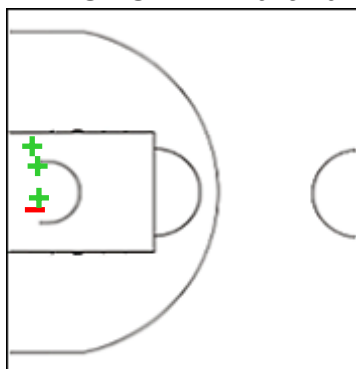
(16-16, 16-18, 15-18, 16-14)

Scoring by 5 min intervals:

| | Q1 | | Q2 | | Q3 | | Q4 | |
|-----|----|----|----|----|----|----|----|----|
| ESP | 9 | 16 | 30 | 32 | 40 | 47 | 57 | 63 |
| CZE | 2 | 16 | 21 | 34 | 43 | 52 | 60 | 66 |

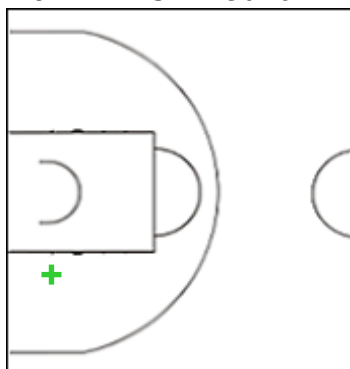
CZE - Czech Republic

14 POKORNA Martina



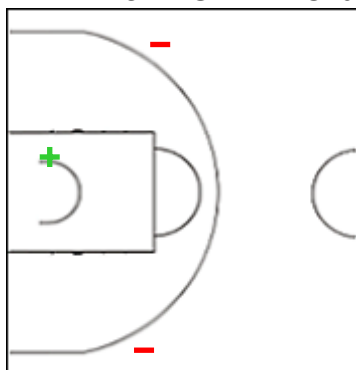
| | M / A | % |
|-------------|-------|----|
| Fied Goals | 3 / 4 | 75 |
| 2 Points | 3 / 4 | 75 |
| 3 Points | 0 / 0 | 0 |
| Free Throws | 0 / 0 | 0 |

15 VYDROVA Julia



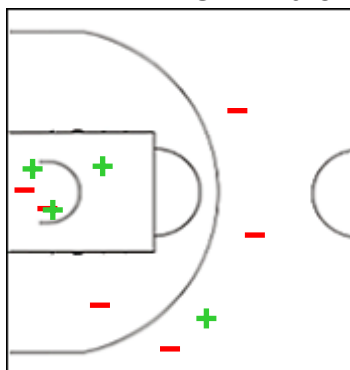
| | M / A | % |
|-------------|-------|-----|
| Fied Goals | 1 / 1 | 100 |
| 2 Points | 1 / 1 | 100 |
| 3 Points | 0 / 0 | 0 |
| Free Throws | 0 / 0 | 0 |

17 BREJCHOVA Eliska



| | M / A | % |
|-------------|-------|-----|
| Fied Goals | 1 / 3 | 33 |
| 2 Points | 1 / 1 | 100 |
| 3 Points | 0 / 2 | 0 |
| Free Throws | 0 / 0 | 0 |

24 KADLECOVA Valentyna



| | M / A | % |
|-------------|--------|----|
| Fied Goals | 4 / 10 | 40 |
| 2 Points | 3 / 6 | 50 |
| 3 Points | 1 / 4 | 25 |
| Free Throws | 0 / 0 | 0 |



Shot Chart

ESP 63 vs 66 CZE

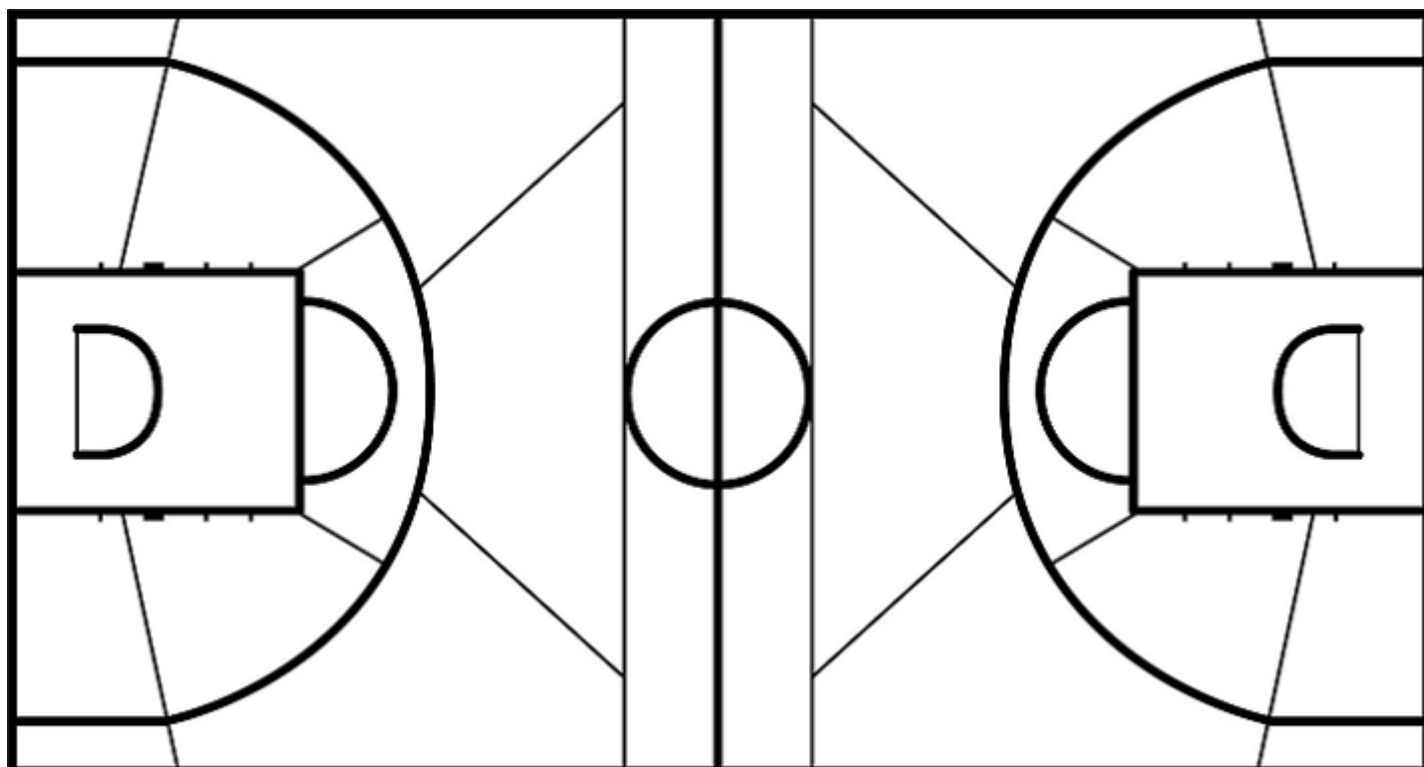
(16-16, 16-18, 15-18, 16-14)

Scoring by 5 min intervals:

| | Q1 | | Q2 | | Q3 | | Q4 | |
|-----|----|----|----|----|----|----|----|----|
| ESP | 9 | 16 | 30 | 32 | 40 | 47 | 57 | 63 |
| CZE | 2 | 16 | 21 | 34 | 43 | 52 | 60 | 66 |

ESP - Spain

CZE - Czech Republic



| | M / A | % |
|-------------|---------|----|
| Fied Goals | 25 / 67 | 37 |
| 2 Points | 24 / 49 | 49 |
| 3 Points | 1 / 18 | 6 |
| Free Throws | 12 / 14 | 86 |

| % | M / A | |
|----|---------|-------------|
| 46 | 29 / 63 | Fied Goals |
| 54 | 25 / 46 | 2 Points |
| 24 | 4 / 17 | 3 Points |
| 50 | 4 / 8 | Free Throws |

GLOBAL PARTNERS

