



**Shot Chart**

**AUS 76 vs 65 TPE**

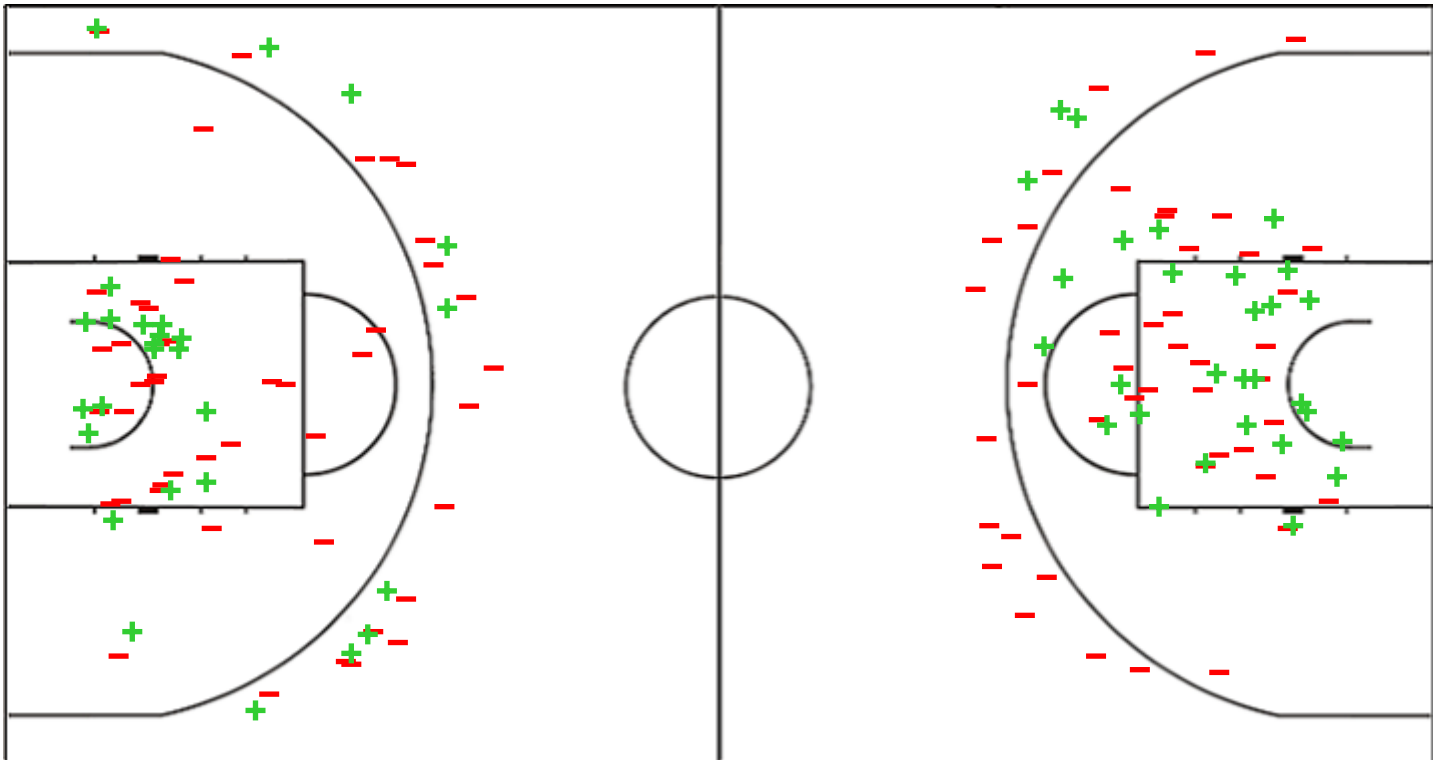
(19-16, 14-18, 20-11, 23-20)

Scoring by 5 min intervals:

	Q1		Q2		Q3		Q4	
<b>AUS</b>	3	19	26	33	43	45	64	76
<b>TPE</b>	6	16	23	34	39	41	57	65

**AUS - Australia**

**TPE - Chinese Taipei**



<b>AUS</b>	M / A	%
<b>Fied Goals</b>	27 / 74	36
<b>2 Points</b>	18 / 48	38
<b>3 Points</b>	9 / 26	35
<b>Free Throws</b>	13 / 18	72

%	M / A	<b>TPE</b>
40	29 / 73	<b>Fied Goals</b>
47	26 / 55	<b>2 Points</b>
17	3 / 18	<b>3 Points</b>
44	4 / 9	<b>Free Throws</b>

**GLOBAL PARTNERS**





Shot Chart

AUS 76 vs 65 TPE

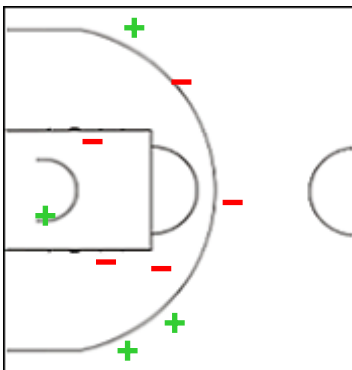
(19-16, 14-18, 20-11, 23-20)

Scoring by 5 min intervals:

	Q1		Q2		Q3		Q4	
AUS	3	19	26	33	43	45	64	76
TPE	6	16	23	34	39	41	57	65

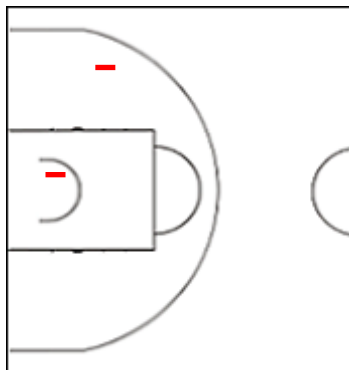
AUS - Australia

4 WHITCOMB Samantha



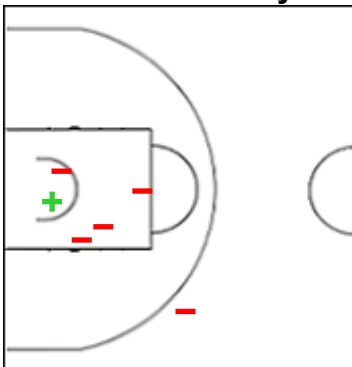
	M / A	%
Fied Goals	4 / 9	44
2 Points	1 / 4	25
3 Points	3 / 5	60
Free Throws	2 / 2	100

6 MANGAKAHIA Tiana Cynthia



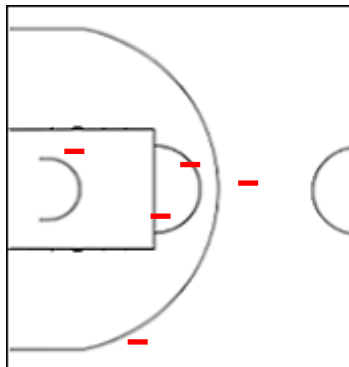
	M / A	%
Fied Goals	0 / 2	0
2 Points	0 / 2	0
3 Points	0 / 0	0
Free Throws	0 / 0	0

7 WALLACE Kristy Anne



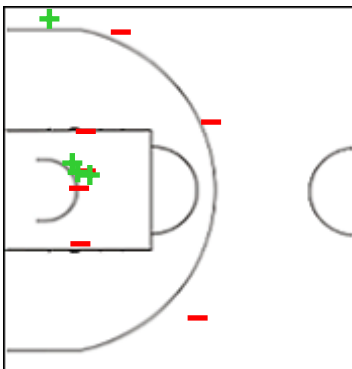
	M / A	%
Fied Goals	1 / 6	17
2 Points	1 / 5	20
3 Points	0 / 1	0
Free Throws	3 / 4	75

8 NICHOLSON Lauren



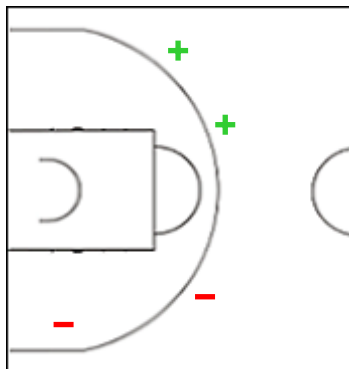
	M / A	%
Fied Goals	0 / 5	0
2 Points	0 / 3	0
3 Points	0 / 2	0
Free Throws	0 / 0	0

10 SHARP Alexandra Jane



	M / A	%
Fied Goals	4 / 11	36
2 Points	3 / 7	43
3 Points	1 / 4	25
Free Throws	2 / 3	67

11 SHELLEY Jazmin



	M / A	%
Fied Goals	2 / 4	50
2 Points	0 / 1	0
3 Points	2 / 3	67
Free Throws	0 / 0	0

GLOBAL PARTNERS





**Shot Chart**

**AUS 76 vs 65 TPE**

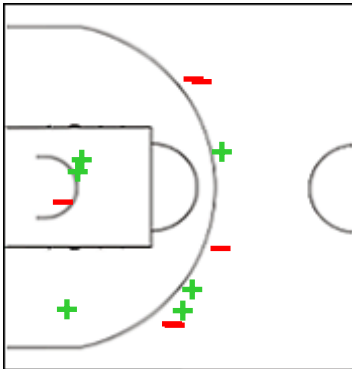
(19-16, 14-18, 20-11, 23-20)

Scoring by 5 min intervals:

	Q1		Q2		Q3		Q4	
<b>AUS</b>	3	19	26	33	43	45	64	76
<b>TPE</b>	6	16	23	34	39	41	57	65

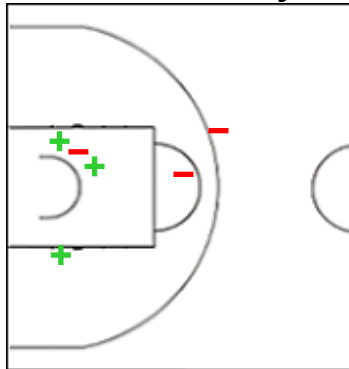
**AUS - Australia**

**12 GARBIN Darcee**



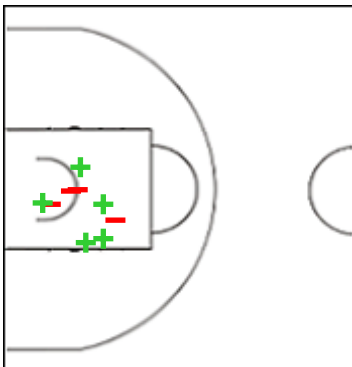
	M / A	%
Fied Goals	6 / 12	50
2 Points	3 / 4	75
3 Points	3 / 8	38
Free Throws	0 / 0	0

**13 FROLING Keely Jane**



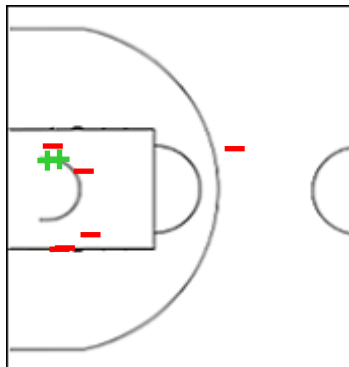
	M / A	%
Fied Goals	3 / 6	50
2 Points	3 / 5	60
3 Points	0 / 1	0
Free Throws	2 / 2	100

**14 AOKUSO Zitina Lusia**



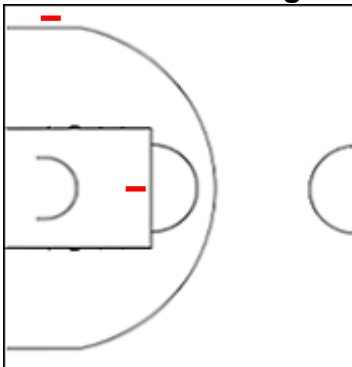
	M / A	%
Fied Goals	5 / 9	56
2 Points	5 / 9	56
3 Points	0 / 0	0
Free Throws	0 / 1	0

**15 SCHERF Lauren Marie**



	M / A	%
Fied Goals	2 / 8	25
2 Points	2 / 7	29
3 Points	0 / 1	0
Free Throws	3 / 4	75

**22 WEHRUNG Abigail Rose**



	M / A	%
Fied Goals	0 / 2	0
2 Points	0 / 1	0
3 Points	0 / 1	0
Free Throws	0 / 0	0

GLOBAL PARTNERS





Shot Chart

AUS 76 vs 65 TPE

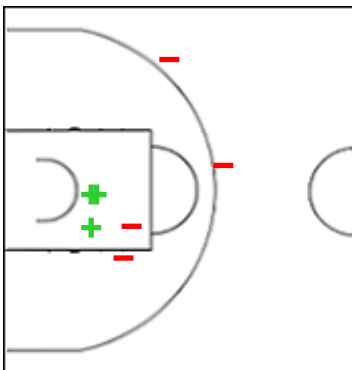
(19-16, 14-18, 20-11, 23-20)

Scoring by 5 min intervals:

	Q1		Q2		Q3		Q4	
AUS	3	19	26	33	43	45	64	76
TPE	6	16	23	34	39	41	57	65

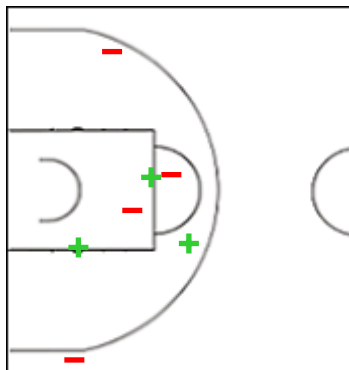
TPE - Chinese Taipei

6 CHEN Wei-An



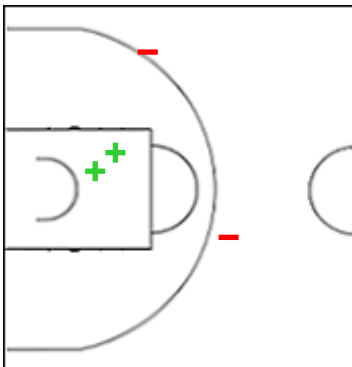
	M / A	%
Fied Goals	3 / 7	43
2 Points	3 / 5	60
3 Points	0 / 2	0
Free Throws	0 / 0	0

7 CHU Yu-Chin



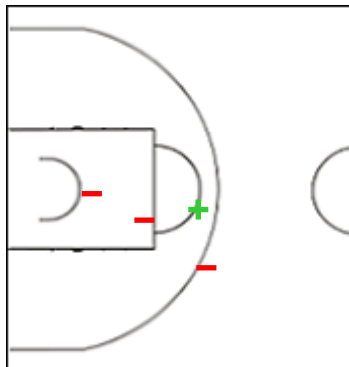
	M / A	%
Fied Goals	3 / 7	43
2 Points	3 / 6	50
3 Points	0 / 1	0
Free Throws	0 / 0	0

9 LIN Wen-Yu



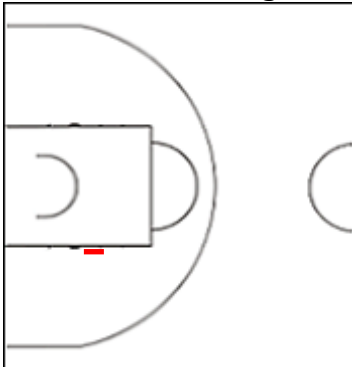
	M / A	%
Fied Goals	2 / 4	50
2 Points	2 / 2	100
3 Points	0 / 2	0
Free Throws	2 / 3	67

10 HAN Ya En



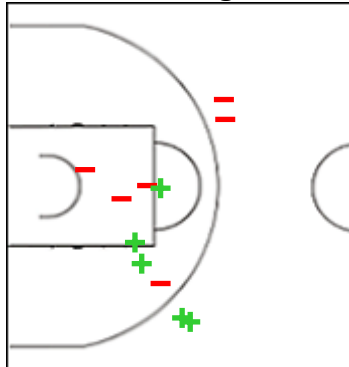
	M / A	%
Fied Goals	1 / 4	25
2 Points	1 / 3	33
3 Points	0 / 1	0
Free Throws	1 / 2	50

11 LIN Hsien-fang



	M / A	%
Fied Goals	0 / 1	0
2 Points	0 / 1	0
3 Points	0 / 0	0
Free Throws	0 / 2	0

12 LIN Yu-Ting



	M / A	%
Fied Goals	5 / 11	45
2 Points	3 / 7	43
3 Points	2 / 4	50
Free Throws	0 / 0	0

GLOBAL PARTNERS





Shot Chart

AUS 76 vs 65 TPE

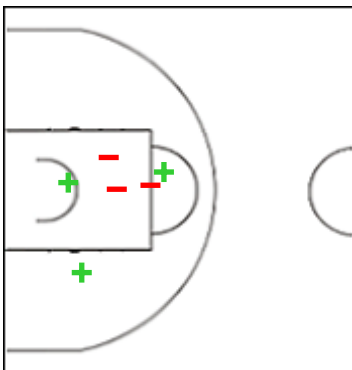
(19-16, 14-18, 20-11, 23-20)

Scoring by 5 min intervals:

	Q1		Q2		Q3		Q4	
AUS	3	19	26	33	43	45	64	76
TPE	6	16	23	34	39	41	57	65

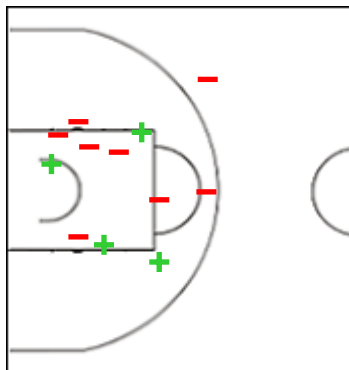
TPE - Chinese Taipei

13 CHENG I-Hsiu



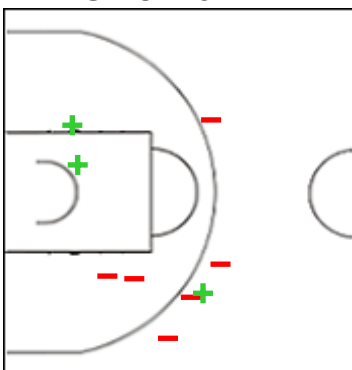
	M / A	%
Fied Goals	3 / 6	50
2 Points	3 / 6	50
3 Points	0 / 0	0
Free Throws	1 / 2	50

22 LIN Tieh



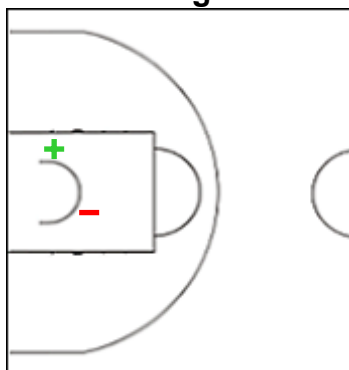
	M / A	%
Fied Goals	4 / 12	33
2 Points	4 / 11	36
3 Points	0 / 1	0
Free Throws	0 / 0	0

24 LIU Hsi-Yeh



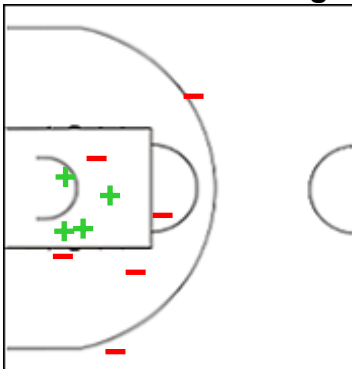
	M / A	%
Fied Goals	3 / 9	33
2 Points	2 / 4	50
3 Points	1 / 5	20
Free Throws	0 / 0	0

27 TAI I Ting



	M / A	%
Fied Goals	1 / 2	50
2 Points	1 / 2	50
3 Points	0 / 0	0
Free Throws	0 / 0	0

55 PENG Hsiao-Tong



	M / A	%
Fied Goals	4 / 10	40
2 Points	4 / 8	50
3 Points	0 / 2	0
Free Throws	0 / 0	0

GLOBAL PARTNERS





**Shot Chart**

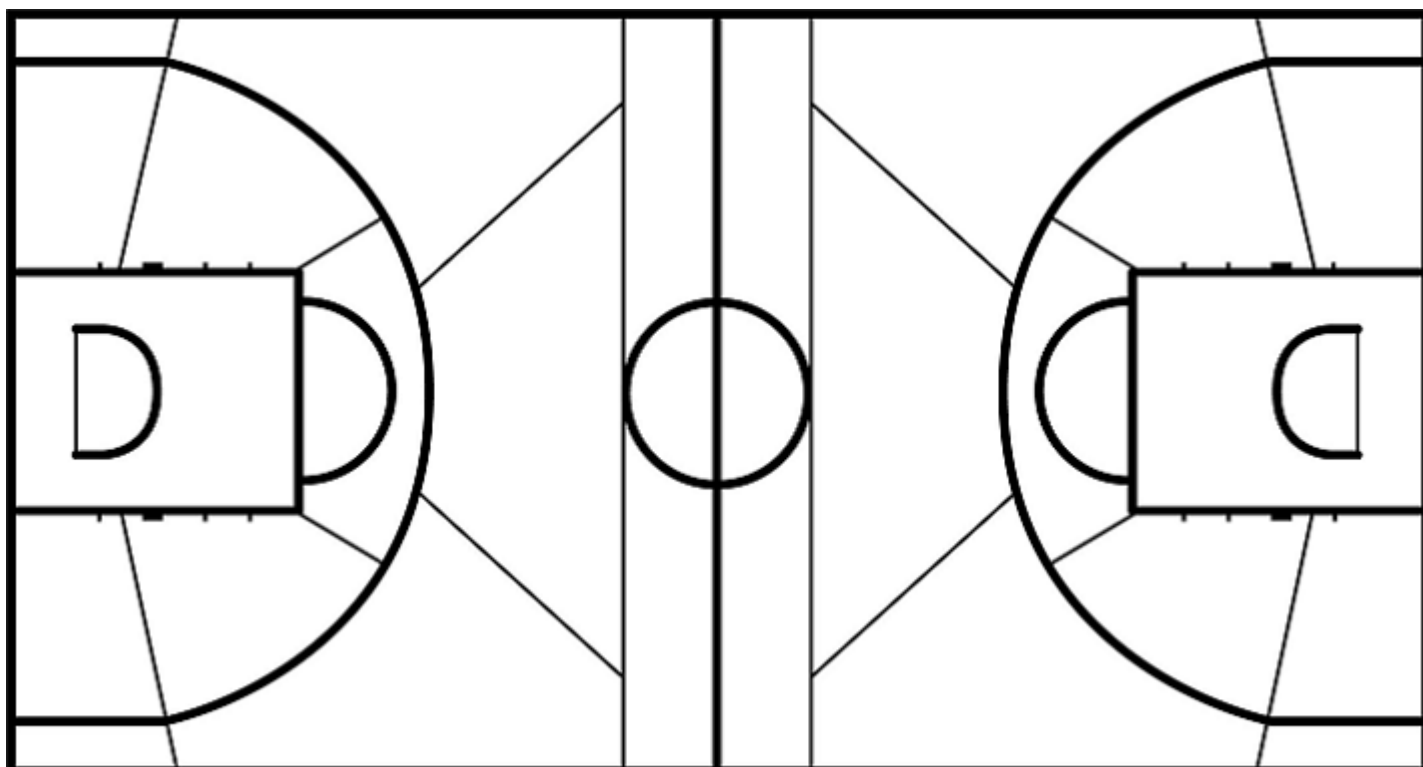
**AUS 76 vs 65 TPE**  
(19-16, 14-18, 20-11, 23-20)

Scoring by 5 min intervals:

	Q1		Q2		Q3		Q4	
<b>AUS</b>	3	19	26	33	43	45	64	76
<b>TPE</b>	6	16	23	34	39	41	57	65

**AUS - Australia**

**TPE - Chinese Taipei**



	M / A	%
<b>Fied Goals</b>	27 / 74	36
<b>2 Points</b>	18 / 48	38
<b>3 Points</b>	9 / 26	35
<b>Free Throws</b>	13 / 18	72

%	M / A	
40	29 / 73	<b>Fied Goals</b>
47	26 / 55	<b>2 Points</b>
17	3 / 18	<b>3 Points</b>
44	4 / 9	<b>Free Throws</b>

**GLOBAL PARTNERS**

