



Shot Chart

TPE 59 vs 74 NZL

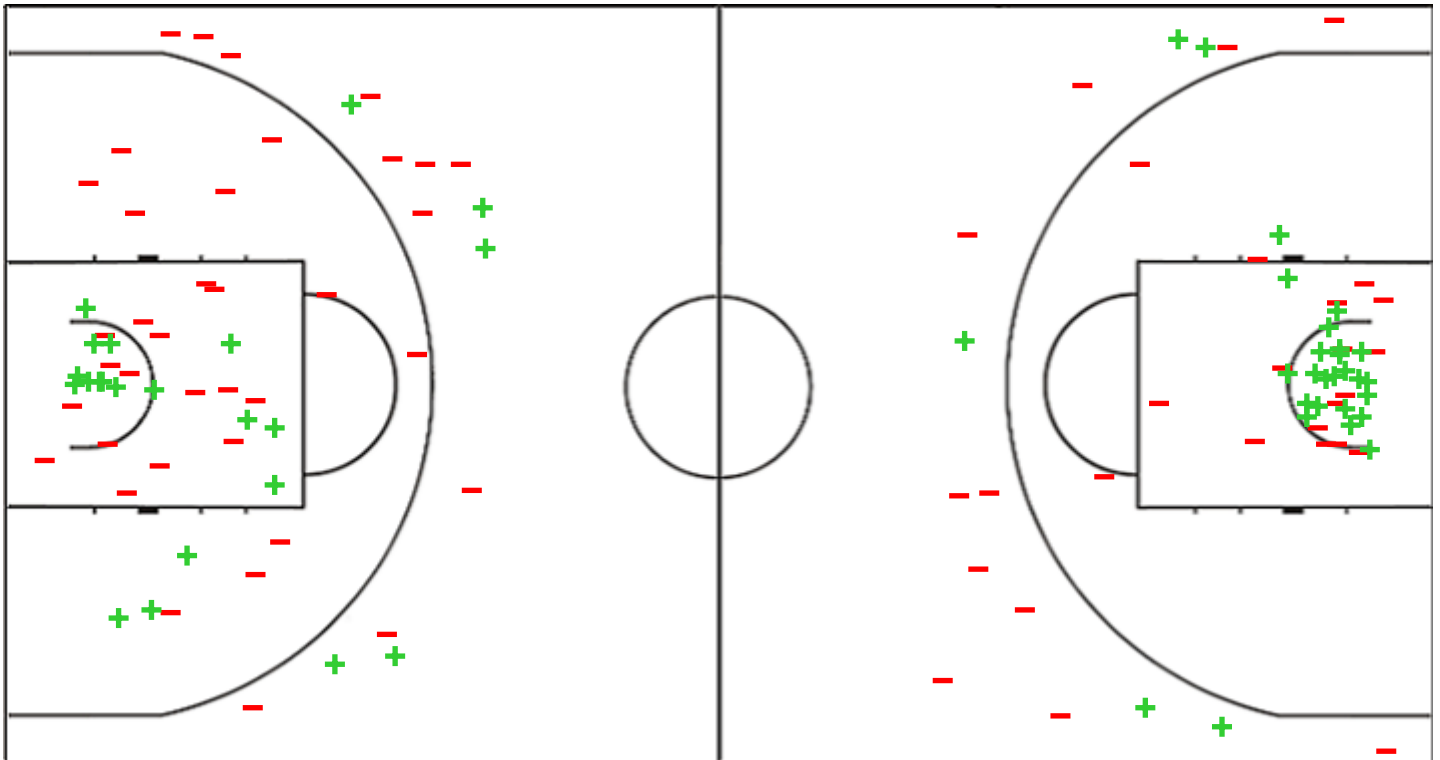
(16-16, 13-22, 15-18, 15-18)

Scoring by 5 min intervals:

	Q1		Q2		Q3		Q4	
TPE	8	16	20	29	32	44	48	59
NZL	13	16	28	38	51	56	68	74

TPE - Chinese Taipei

NZL - New Zealand



TPE	M / A	%
Fied Goals	22 / 59	37
2 Points	17 / 43	40
3 Points	5 / 16	31
Free Throws	10 / 11	91

%	M / A	NZL
50	28 / 56	Fied Goals
58	23 / 40	2 Points
31	5 / 16	3 Points
76	13 / 17	Free Throws

GLOBAL PARTNERS





Shot Chart

TPE 59 vs 74 NZL

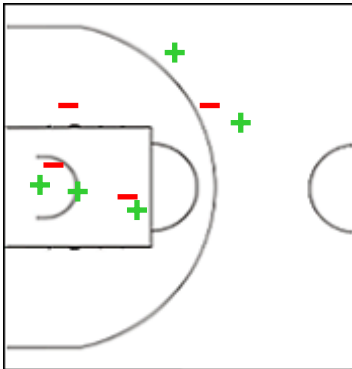
(16-16, 13-22, 15-18, 15-18)

Scoring by 5 min intervals:

	Q1		Q2		Q3		Q4	
TPE	8	16	20	29	32	44	48	59
NZL	13	16	28	38	51	56	68	74

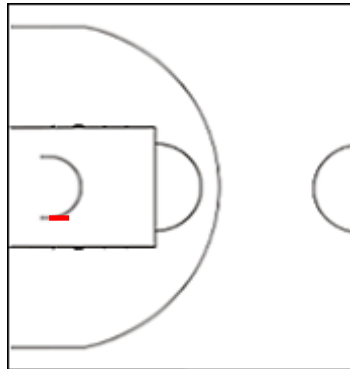
TPE - Chinese Taipei

6 CHEN Wei-An



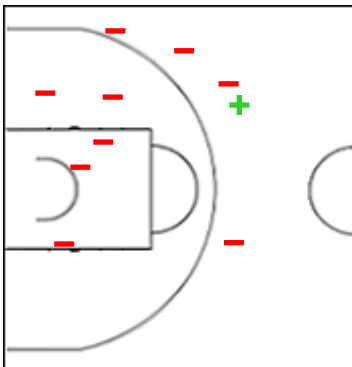
	M / A	%
Fied Goals	5 / 9	56
2 Points	3 / 6	50
3 Points	2 / 3	67
Free Throws	0 / 0	0

7 CHU Yu-Chin



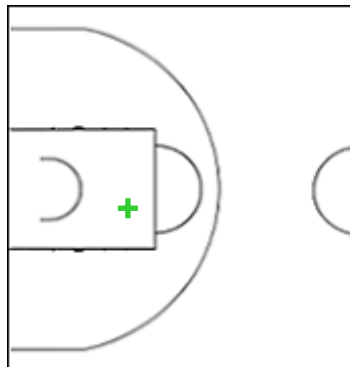
	M / A	%
Fied Goals	0 / 1	0
2 Points	0 / 1	0
3 Points	0 / 0	0
Free Throws	0 / 0	0

9 LIN Wen-Yu



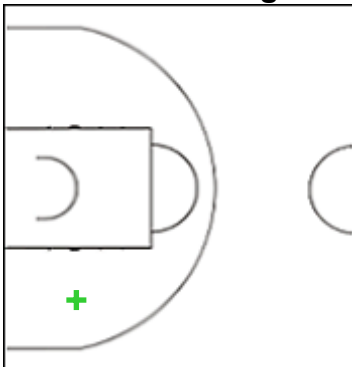
	M / A	%
Fied Goals	1 / 10	10
2 Points	0 / 5	0
3 Points	1 / 5	20
Free Throws	4 / 4	100

10 HAN Ya En



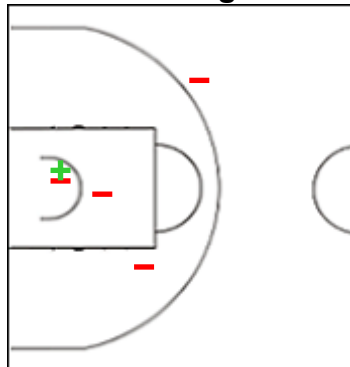
	M / A	%
Fied Goals	1 / 1	100
2 Points	1 / 1	100
3 Points	0 / 0	0
Free Throws	0 / 0	0

11 LIN Hsien-fang



	M / A	%
Fied Goals	1 / 1	100
2 Points	1 / 1	100
3 Points	0 / 0	0
Free Throws	0 / 0	0

12 LIN Yu-Ting



	M / A	%
Fied Goals	1 / 5	20
2 Points	1 / 4	25
3 Points	0 / 1	0
Free Throws	0 / 0	0

GLOBAL PARTNERS





Shot Chart

TPE 59 vs 74 NZL

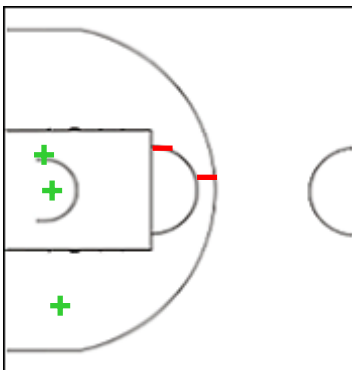
(16-16, 13-22, 15-18, 15-18)

Scoring by 5 min intervals:

	Q1		Q2		Q3		Q4	
TPE	8	16	20	29	32	44	48	59
NZL	13	16	28	38	51	56	68	74

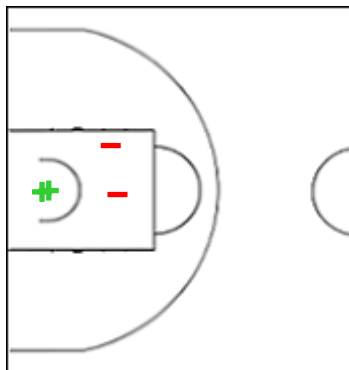
TPE - Chinese Taipei

13 CHENG I-Hsiu



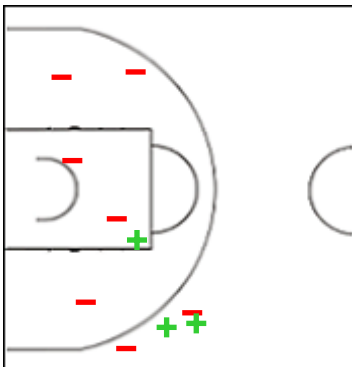
	M / A	%
Fied Goals	3 / 5	60
2 Points	3 / 5	60
3 Points	0 / 0	0
Free Throws	2 / 2	100

22 LIN Tieh



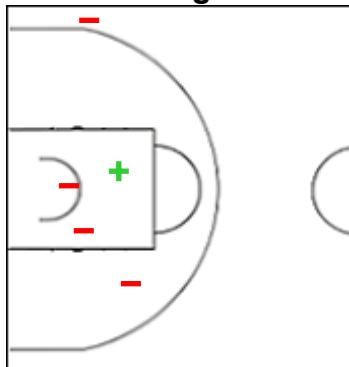
	M / A	%
Fied Goals	2 / 4	50
2 Points	2 / 4	50
3 Points	0 / 0	0
Free Throws	1 / 1	100

24 LIU Hsi-Yeh



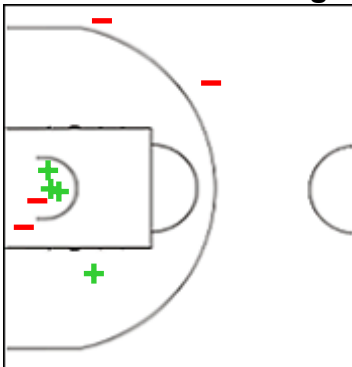
	M / A	%
Fied Goals	3 / 10	30
2 Points	1 / 6	17
3 Points	2 / 4	50
Free Throws	1 / 2	50

27 TAI I Ting



	M / A	%
Fied Goals	1 / 5	20
2 Points	1 / 4	25
3 Points	0 / 1	0
Free Throws	2 / 2	100

55 PENG Hsiao-Tong



	M / A	%
Fied Goals	4 / 8	50
2 Points	4 / 6	67
3 Points	0 / 2	0
Free Throws	0 / 0	0

GLOBAL PARTNERS





Shot Chart

TPE 59 vs 74 NZL

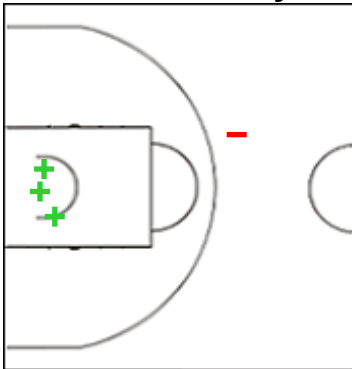
(16-16, 13-22, 15-18, 15-18)

Scoring by 5 min intervals:

	Q1		Q2		Q3		Q4	
TPE	8	16	20	29	32	44	48	59
NZL	13	16	28	38	51	56	68	74

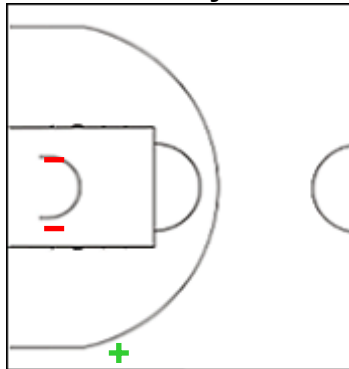
NZL - New Zealand

1 GOULDING Mary



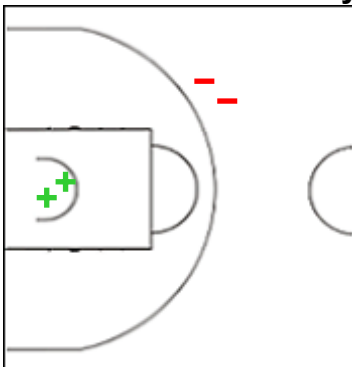
	M / A	%
Fied Goals	3 / 4	75
2 Points	3 / 3	100
3 Points	0 / 1	0
Free Throws	0 / 0	0

3 TAIA Ashley



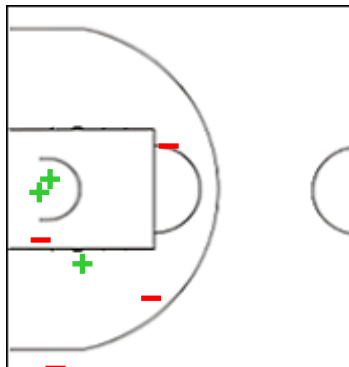
	M / A	%
Fied Goals	1 / 3	33
2 Points	0 / 2	0
3 Points	1 / 1	100
Free Throws	0 / 0	0

4 LEGER-WALKER Krystal



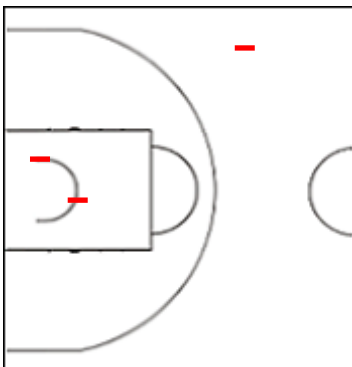
	M / A	%
Fied Goals	2 / 4	50
2 Points	2 / 2	100
3 Points	0 / 2	0
Free Throws	0 / 0	0

5 LEGER-WALKER Charlisse



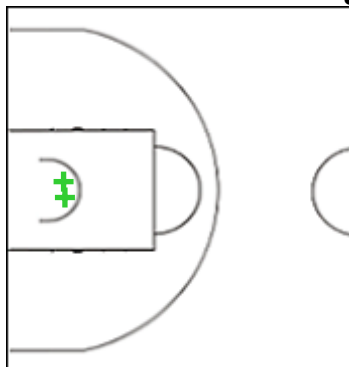
	M / A	%
Fied Goals	3 / 7	43
2 Points	3 / 6	50
3 Points	0 / 1	0
Free Throws	3 / 3	100

6 BOAGNI Tessa



	M / A	%
Fied Goals	0 / 3	0
2 Points	0 / 2	0
3 Points	0 / 1	0
Free Throws	2 / 4	50

7 KARAITIANA Ashleigh



	M / A	%
Fied Goals	2 / 2	100
2 Points	2 / 2	100
3 Points	0 / 0	0
Free Throws	0 / 0	0

GLOBAL PARTNERS





Shot Chart

TPE 59 vs 74 NZL

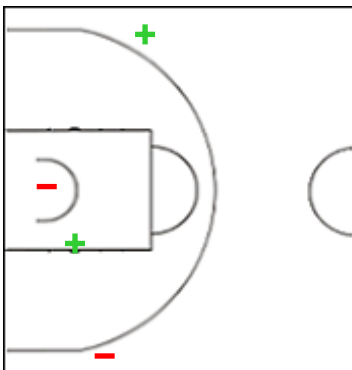
(16-16, 13-22, 15-18, 15-18)

Scoring by 5 min intervals:

	Q1		Q2		Q3		Q4	
TPE	8	16	20	29	32	44	48	59
NZL	13	16	28	38	51	56	68	74

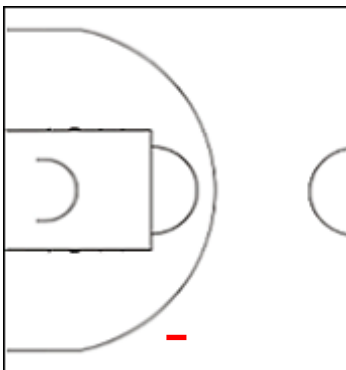
NZL - New Zealand

8 BLAIR Brooke



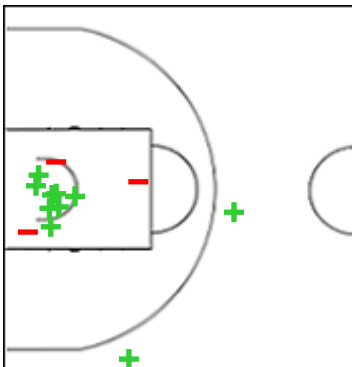
	M / A	%
Fied Goals	2 / 4	50
2 Points	1 / 2	50
3 Points	1 / 2	50
Free Throws	0 / 0	0

10 PAALVAST Chevannah



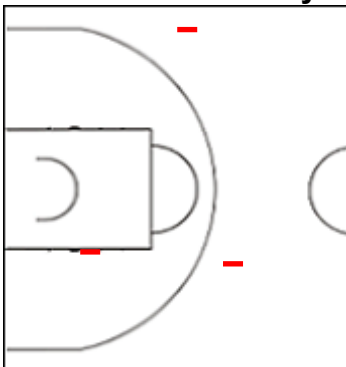
	M / A	%
Fied Goals	0 / 1	0
2 Points	0 / 0	0
3 Points	0 / 1	0
Free Throws	3 / 4	75

12 DAVIDSON Penina



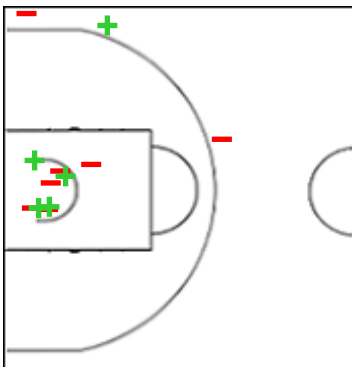
	M / A	%
Fied Goals	10 / 13	77
2 Points	8 / 11	73
3 Points	2 / 2	100
Free Throws	4 / 5	80

23 HIPPOLITE Lauryn



	M / A	%
Fied Goals	0 / 3	0
2 Points	0 / 1	0
3 Points	0 / 2	0
Free Throws	0 / 0	0

32 PURCELL Kalani



	M / A	%
Fied Goals	5 / 12	42
2 Points	4 / 9	44
3 Points	1 / 3	33
Free Throws	1 / 1	100

GLOBAL PARTNERS





Shot Chart

TPE 59 vs 74 NZL

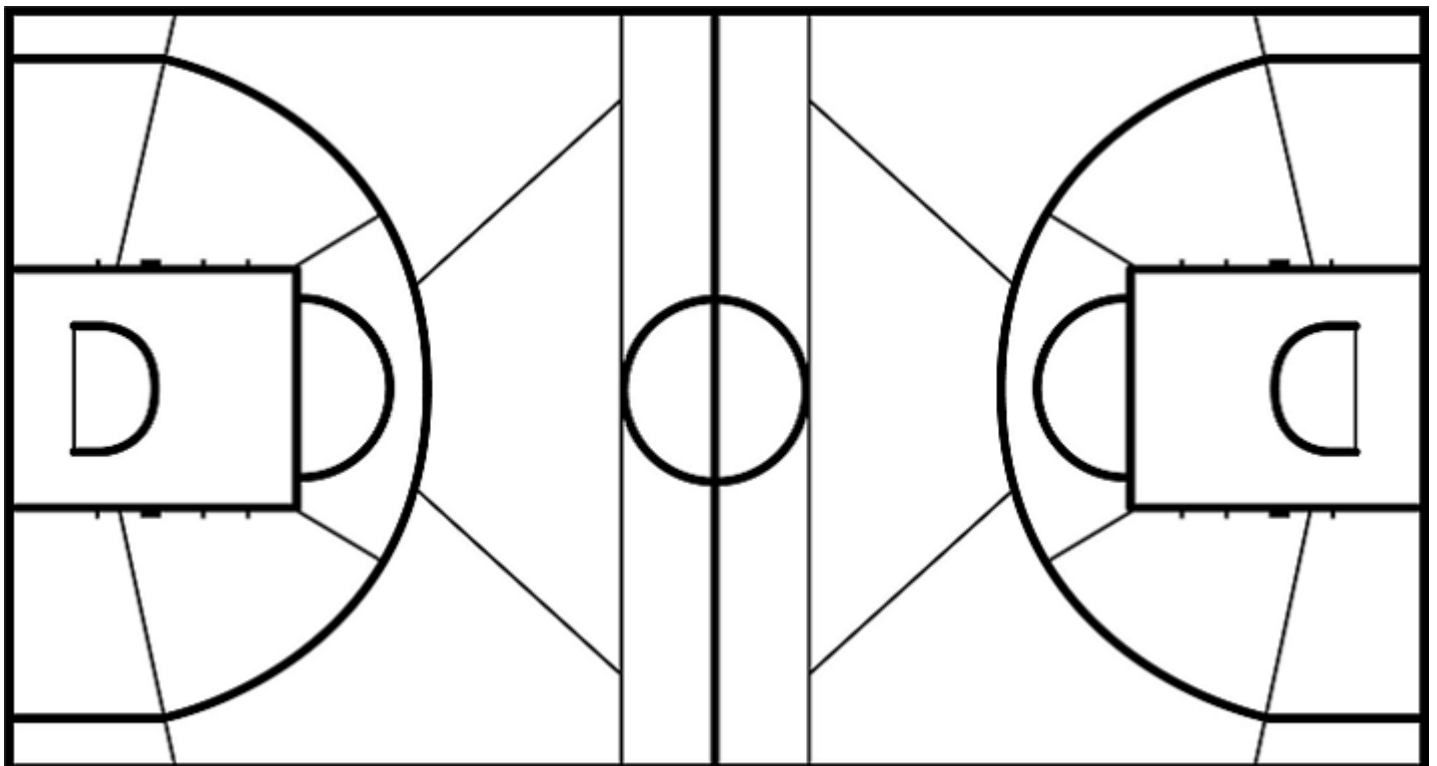
(16-16, 13-22, 15-18, 15-18)

Scoring by 5 min intervals:

	Q1		Q2		Q3		Q4	
TPE	8	16	20	29	32	44	48	59
NZL	13	16	28	38	51	56	68	74

TPE - Chinese Taipei

NZL - New Zealand



	M / A	%
Fied Goals	22 / 59	37
2 Points	17 / 43	40
3 Points	5 / 16	31
Free Throws	10 / 11	91

%	M / A	
50	28 / 56	Fied Goals
58	23 / 40	2 Points
31	5 / 16	3 Points
76	13 / 17	Free Throws

GLOBAL PARTNERS

