

## Shot Chart

### MAGCB 65 vs 64 DME

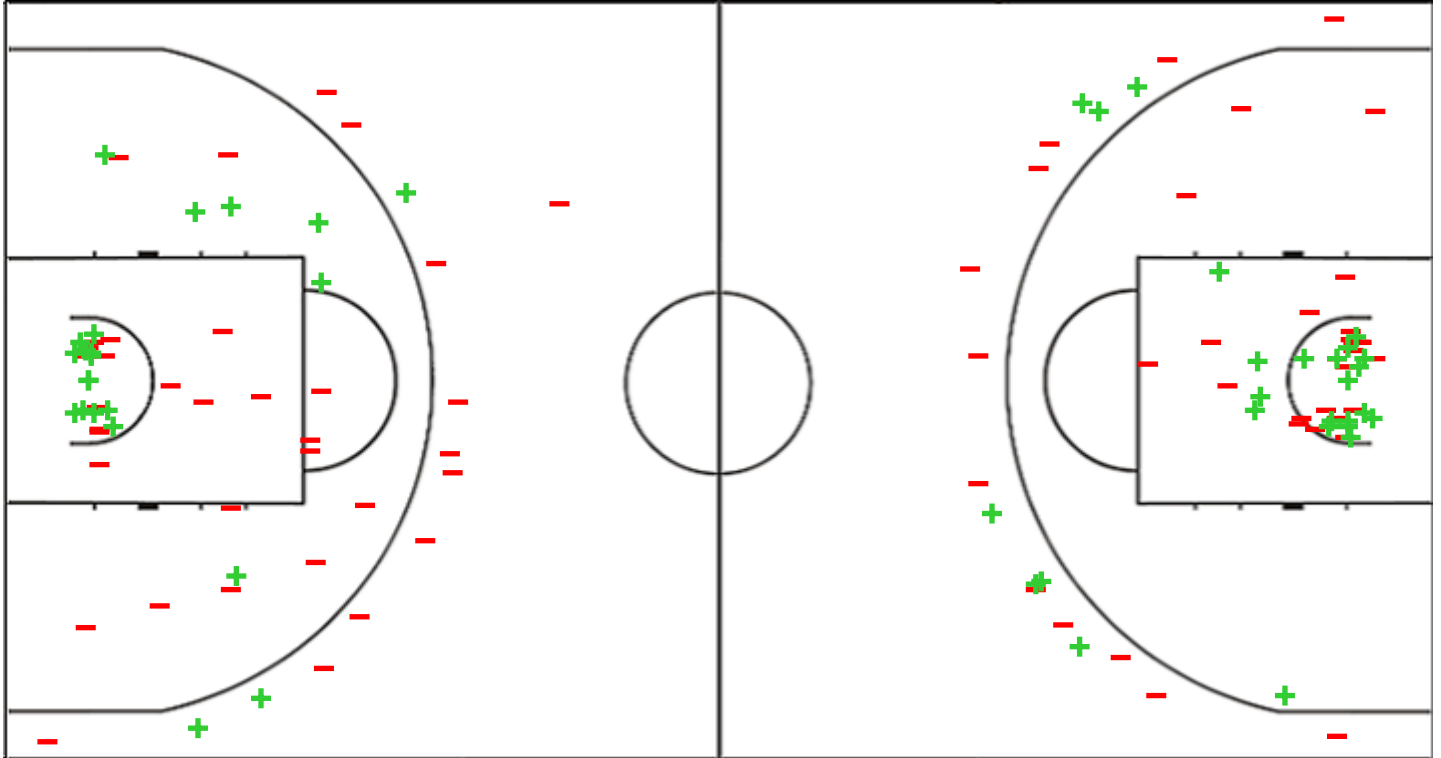
(14-10, 10-6, 16-28, 25-20)

Scoring by 5 min intervals:

	Q1		Q2		Q3		Q4	
<b>MAGCB</b>	9	14	22	24	30	40	51	65
<b>DME</b>	6	10	12	16	33	44	54	64

#### MAGCB - La Molisana Campobasso

#### DME - Ensino Lugo CB



<b>MAGCB</b>	M / A	%
Fied Goals	22 / 57	39
2 Points	19 / 43	44
3 Points	3 / 14	21
Free Throws	18 / 23	78

%	M / A	<b>DME</b>
42	26 / 62	Fied Goals
44	19 / 43	2 Points
37	7 / 19	3 Points
50	5 / 10	Free Throws

## Shot Chart

### MAGCB 65 vs 64 DME

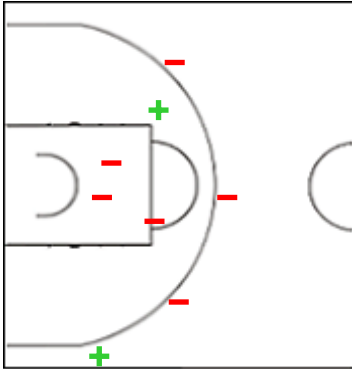
(14-10, 10-6, 16-28, 25-20)

Scoring by 5 min intervals:

	Q1		Q2		Q3		Q4	
<b>MAGCB</b>	9	14	22	24	30	40	51	65
<b>DME</b>	6	10	12	16	33	44	54	64

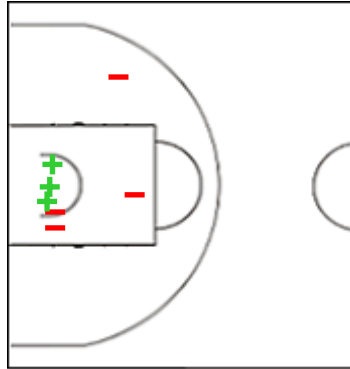
### MAGCB - La Molisana Campobasso

#### 5 TOGLIANI Anna



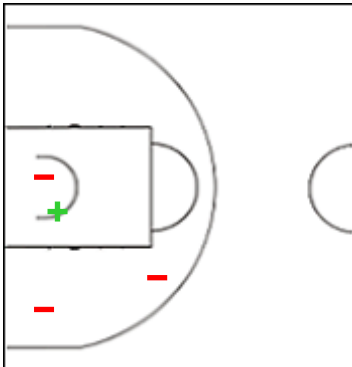
	M / A	%
Fied Goals	2 / 8	25
2 Points	1 / 4	25
3 Points	1 / 4	25
Free Throws	1 / 2	50

#### 7 PREMASUNAC Nina



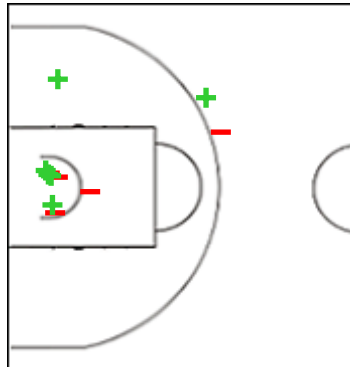
	M / A	%
Fied Goals	3 / 7	43
2 Points	3 / 7	43
3 Points	0 / 0	0
Free Throws	3 / 4	75

#### 9 TRIMBOLI Stefania



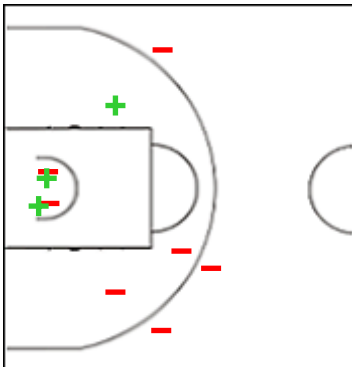
	M / A	%
Fied Goals	1 / 4	25
2 Points	1 / 4	25
3 Points	0 / 0	0
Free Throws	0 / 0	0

#### 11 QUIÑONEZ Blanca



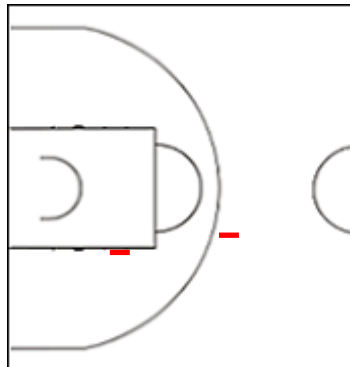
	M / A	%
Fied Goals	6 / 11	55
2 Points	5 / 9	56
3 Points	1 / 2	50
Free Throws	4 / 6	67

#### 14 CHAGAS Florencia



	M / A	%
Fied Goals	3 / 10	30
2 Points	3 / 7	43
3 Points	0 / 3	0
Free Throws	5 / 5	100

#### 17 NICOLODI Giuditta



	M / A	%
Fied Goals	0 / 2	0
2 Points	0 / 1	0
3 Points	0 / 1	0
Free Throws	0 / 0	0

## Shot Chart

### MAGCB 65 vs 64 DME

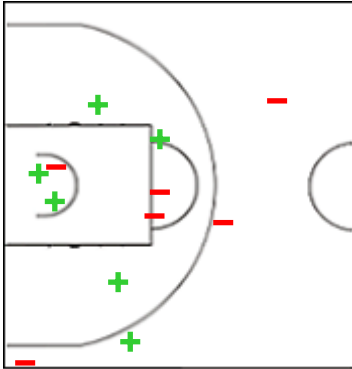
(14-10, 10-6, 16-28, 25-20)

Scoring by 5 min intervals:

	Q1		Q2		Q3		Q4	
<b>MAGCB</b>	9	14	22	24	30	40	51	65
<b>DME</b>	6	10	12	16	33	44	54	64

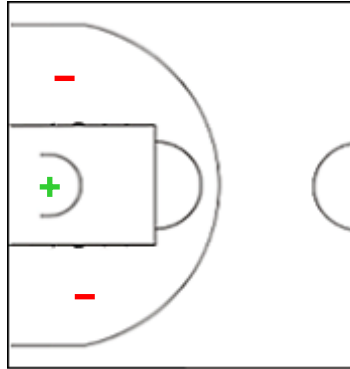
### MAGCB - La Molisana Campobasso

#### 24 PARKS Robyn



	M / A	%
Fied Goals	6 / 12	50
2 Points	5 / 8	63
3 Points	1 / 4	25
Free Throws	5 / 6	83

#### 28 EGWOH Ashley Chinenye



	M / A	%
Fied Goals	1 / 3	33
2 Points	1 / 3	33
3 Points	0 / 0	0
Free Throws	0 / 0	0

## Shot Chart

### MAGCB 65 vs 64 DME

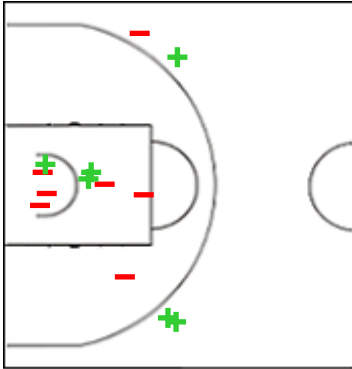
(14-10, 10-6, 16-28, 25-20)

Scoring by 5 min intervals:

	Q1		Q2		Q3		Q4	
<b>MAGCB</b>	9	14	22	24	30	40	51	65
<b>DME</b>	6	10	12	16	33	44	54	64

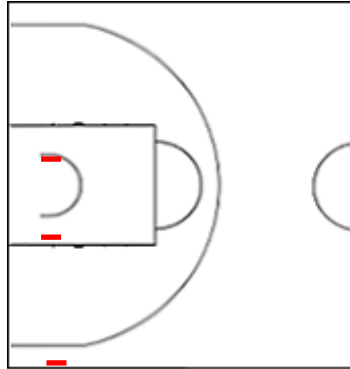
### DME - Ensino Lugo CB

#### 4 PRIETO MARTINEZ Alba



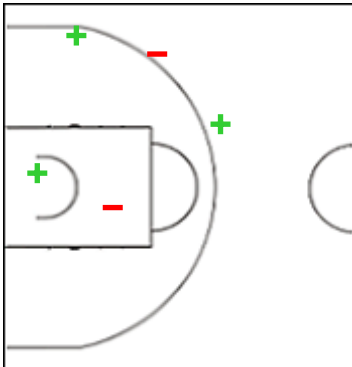
	M / A	%
Fied Goals	6 / 13	46
2 Points	3 / 9	33
3 Points	3 / 4	75
Free Throws	0 / 0	0

#### 5 ERAUNCETAMURGUIL Maria



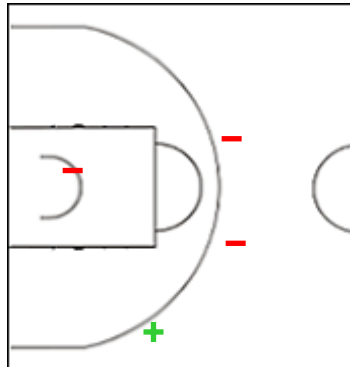
	M / A	%
Fied Goals	0 / 3	0
2 Points	0 / 2	0
3 Points	0 / 1	0
Free Throws	0 / 0	0

#### 7 ORSILI Alessandra



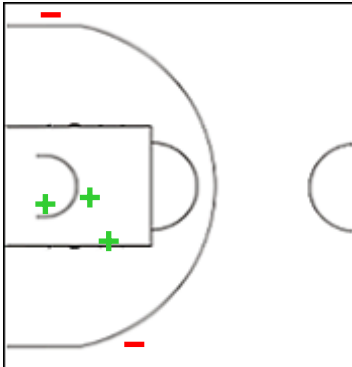
	M / A	%
Fied Goals	3 / 5	60
2 Points	2 / 3	67
3 Points	1 / 2	50
Free Throws	2 / 2	100

#### 9 LIZARAZU HERRERA Marina



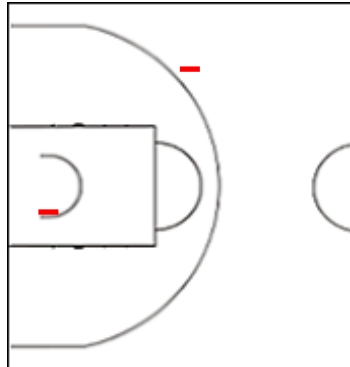
	M / A	%
Fied Goals	1 / 4	25
2 Points	0 / 1	0
3 Points	1 / 3	33
Free Throws	0 / 0	0

#### 10 VAN DEN ADEL Natalie



	M / A	%
Fied Goals	3 / 5	60
2 Points	3 / 3	100
3 Points	0 / 2	0
Free Throws	2 / 2	100

#### 12 ALIAGA ROMERO Laura



	M / A	%
Fied Goals	0 / 2	0
2 Points	0 / 1	0
3 Points	0 / 1	0
Free Throws	0 / 0	0

## Shot Chart

### MAGCB 65 vs 64 DME

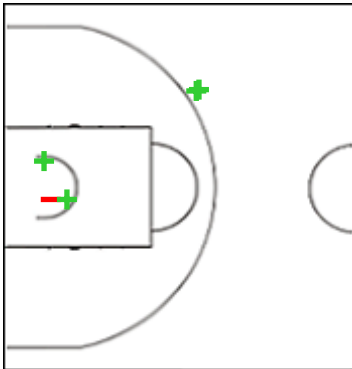
(14-10, 10-6, 16-28, 25-20)

Scoring by 5 min intervals:

	Q1		Q2		Q3		Q4	
<b>MAGCB</b>	9	14	22	24	30	40	51	65
<b>DME</b>	6	10	12	16	33	44	54	64

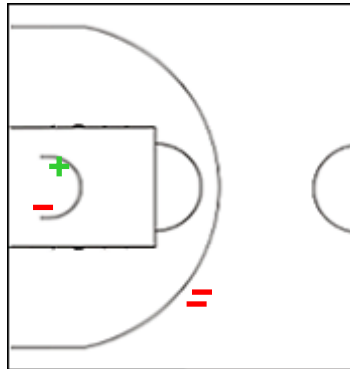
### DME - Ensino Lugo CB

#### 14 BAHÍ BLANQUERA Georgina



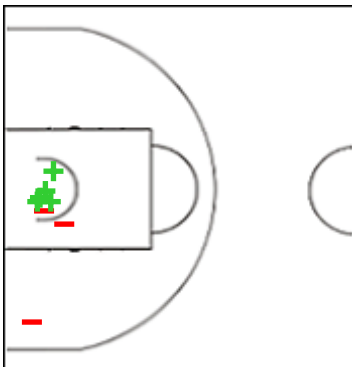
	M / A	%
Fied Goals	4 / 5	80
2 Points	2 / 3	67
3 Points	2 / 2	100
Free Throws	0 / 0	0

#### 16 OMA Helena



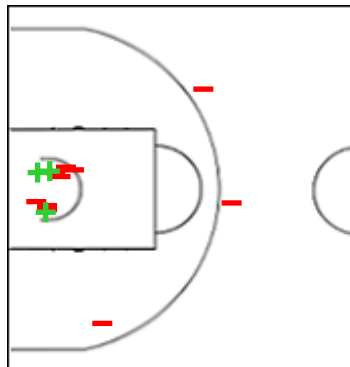
	M / A	%
Fied Goals	1 / 4	25
2 Points	1 / 2	50
3 Points	0 / 2	0
Free Throws	1 / 2	50

#### 23 SILVA Sofia



	M / A	%
Fied Goals	5 / 8	63
2 Points	5 / 8	63
3 Points	0 / 0	0
Free Throws	0 / 2	0

#### 32 WHITE Chatrice



	M / A	%
Fied Goals	3 / 13	23
2 Points	3 / 11	27
3 Points	0 / 2	0
Free Throws	0 / 2	0

## Shot Chart

### MAGCB 65 vs 64 DME

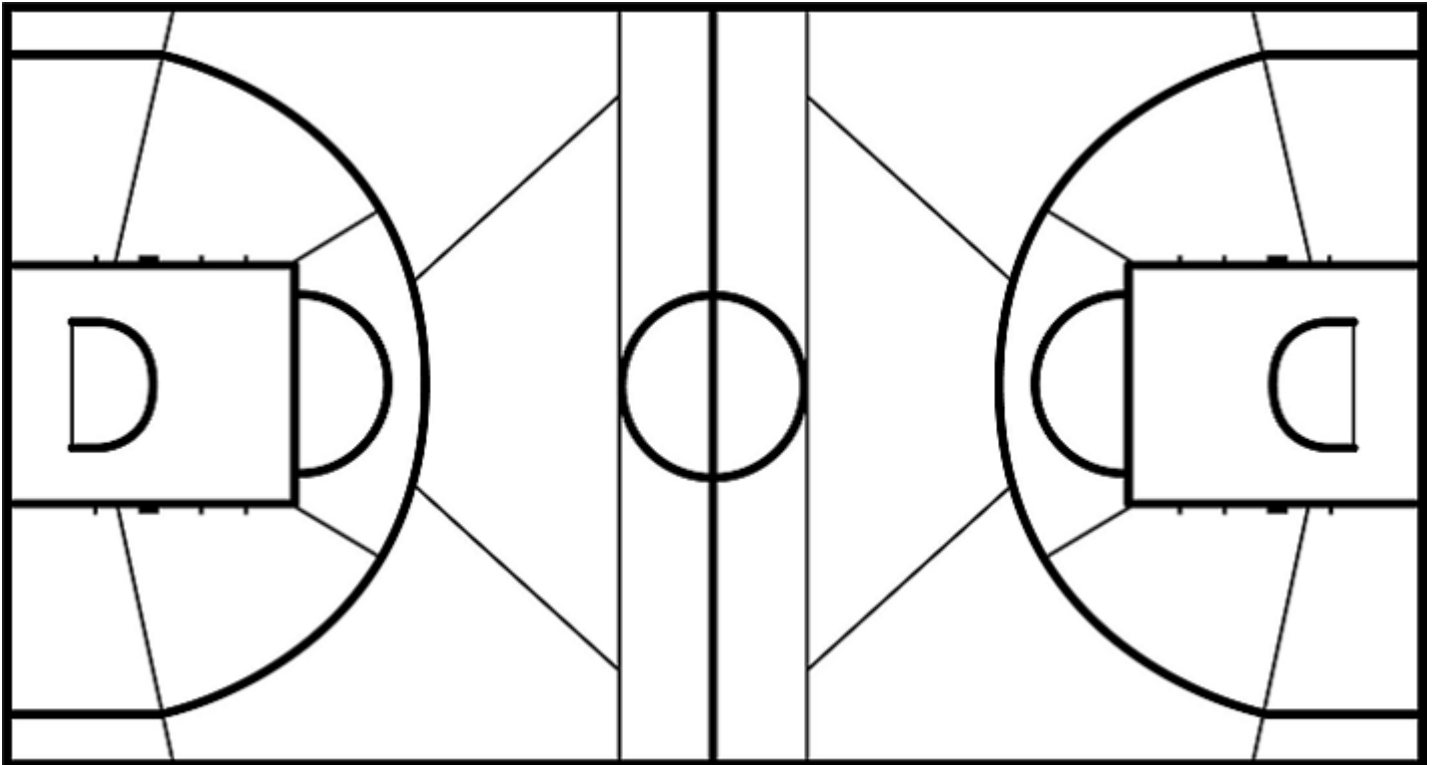
(14-10, 10-6, 16-28, 25-20)

Scoring by 5 min intervals:

	Q1		Q2		Q3		Q4	
<b>MAGCB</b>	9	14	22	24	30	40	51	65
<b>DME</b>	6	10	12	16	33	44	54	64

**MAGCB - La Molisana Campobasso**

**DME - Ensino Lugo CB**



	M / A	%
<b>Fied Goals</b>	22 / 57	39
<b>2 Points</b>	19 / 43	44
<b>3 Points</b>	3 / 14	21
<b>Free Throws</b>	18 / 23	78

%	M / A	
42	26 / 62	<b>Fied Goals</b>
44	19 / 43	<b>2 Points</b>
37	7 / 19	<b>3 Points</b>
50	5 / 10	<b>Free Throws</b>