

## Shot Chart

### DME 66 vs 55 MAGCB

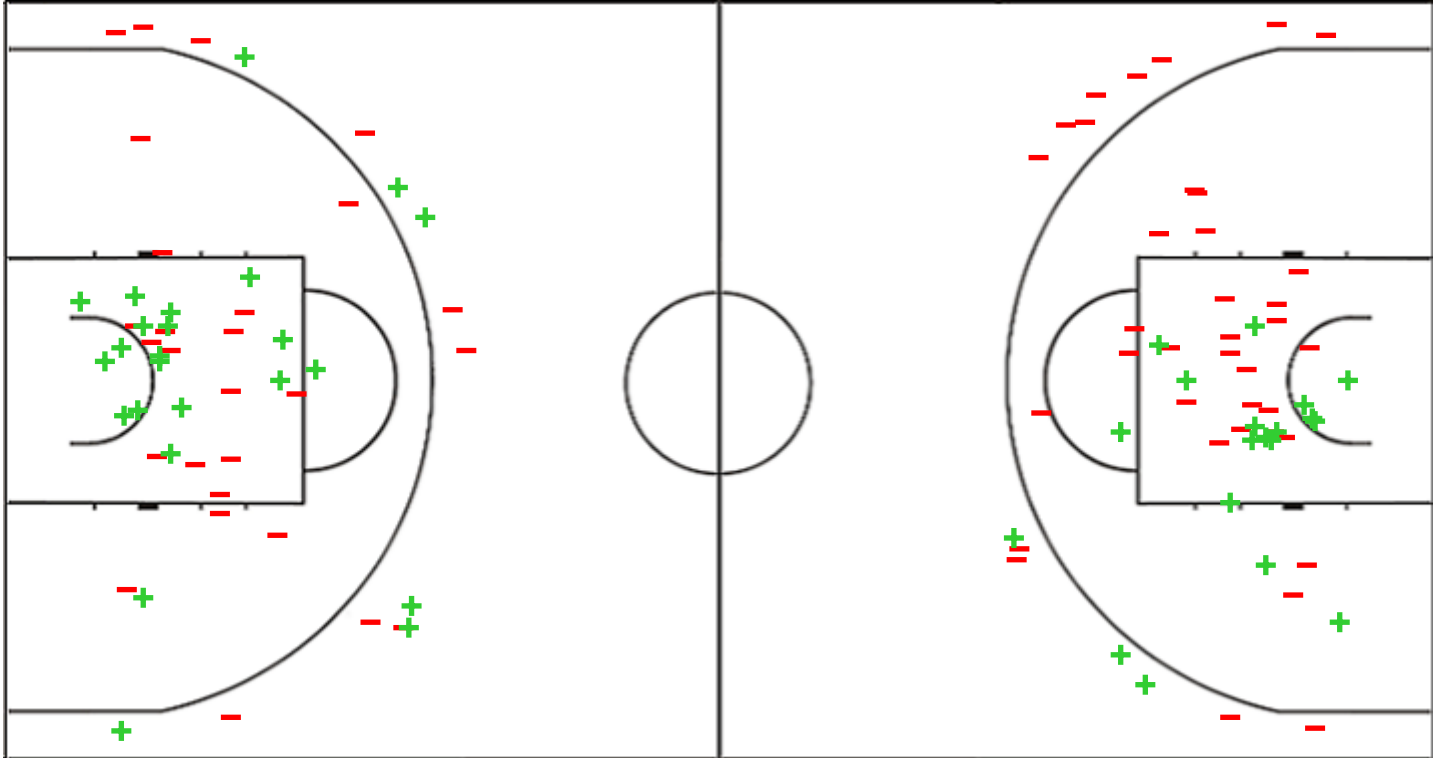
(19-10, 18-14, 15-14, 14-17)

Scoring by 5 min intervals:

	Q1		Q2		Q3		Q4	
<b>DME</b>	7	19	31	31	45	52	61	66
<b>MAGCB</b>	4	10	18	18	33	38	45	55

DME - Ensino Lugo CB

MAGCB - La Molisana Campobasso



DME	M / A	%
Fied Goals	24 / 51	47
2 Points	18 / 36	50
3 Points	6 / 15	40
Free Throws	12 / 20	60

%	M / A	MAGCB
34	19 / 56	Fied Goals
39	16 / 41	2 Points
20	3 / 15	3 Points
64	14 / 22	Free Throws

## Shot Chart

### DME 66 vs 55 MAGCB

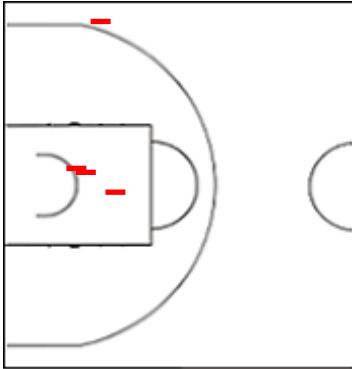
(19-10, 18-14, 15-14, 14-17)

Scoring by 5 min intervals:

	Q1		Q2		Q3		Q4	
<b>DME</b>	7	19	31	31	45	52	61	66
<b>MAGCB</b>	4	10	18	18	33	38	45	55

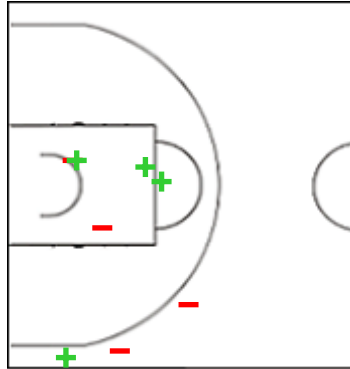
### DME - Ensino Lugo CB

#### 5 ERAUNCETAMURGUIL Maria



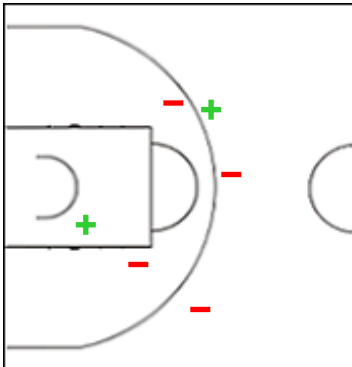
	M / A	%
Fied Goals	0 / 4	0
2 Points	0 / 3	0
3 Points	0 / 1	0
Free Throws	1 / 2	50

#### 7 ORSILI Alessandra



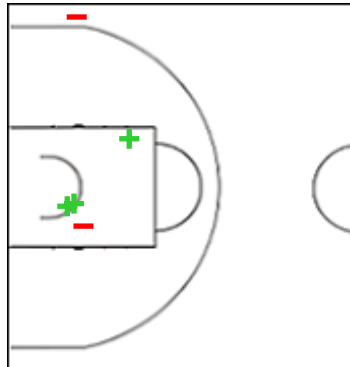
	M / A	%
Fied Goals	4 / 8	50
2 Points	3 / 5	60
3 Points	1 / 3	33
Free Throws	0 / 0	0

#### 9 LIZARAZU HERRERA Marina



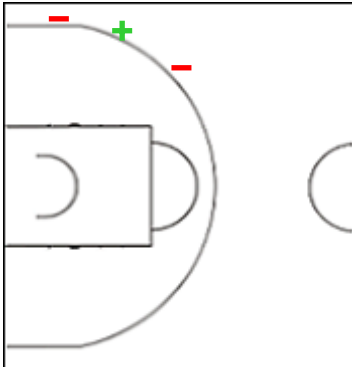
	M / A	%
Fied Goals	2 / 6	33
2 Points	1 / 3	33
3 Points	1 / 3	33
Free Throws	0 / 0	0

#### 10 VAN DEN ADEL Natalie



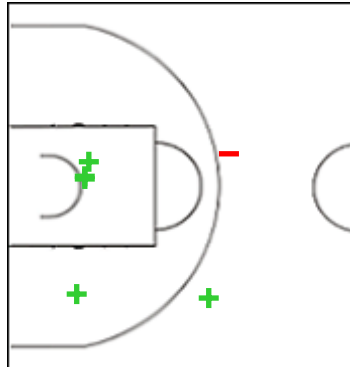
	M / A	%
Fied Goals	3 / 5	60
2 Points	3 / 4	75
3 Points	0 / 1	0
Free Throws	1 / 2	50

#### 12 ALIAGA ROMERO Laura



	M / A	%
Fied Goals	1 / 3	33
2 Points	0 / 0	0
3 Points	1 / 3	33
Free Throws	0 / 0	0

#### 14 BAHI BLANQUERA Georgina



	M / A	%
Fied Goals	5 / 6	83
2 Points	4 / 4	100
3 Points	1 / 2	50
Free Throws	5 / 9	56

## Shot Chart

### DME 66 vs 55 MAGCB

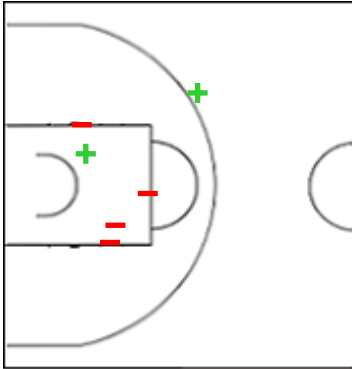
(19-10, 18-14, 15-14, 14-17)

Scoring by 5 min intervals:

	Q1		Q2		Q3		Q4	
<b>DME</b>	7	19	31	31	45	52	61	66
<b>MAGCB</b>	4	10	18	18	33	38	45	55

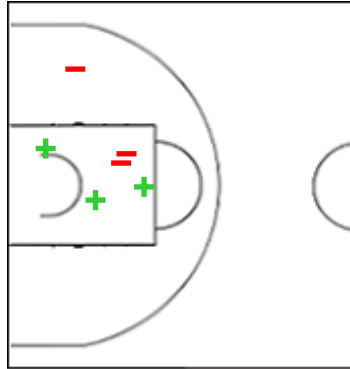
### DME - Ensino Lugo CB

#### 16 OMA Helena



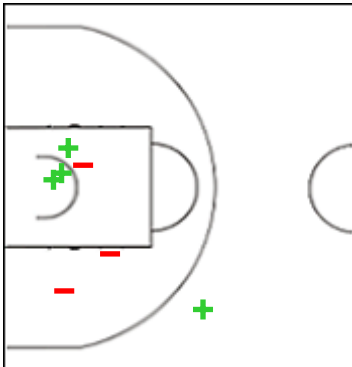
	M / A	%
<b>Fied Goals</b>	2 / 6	33
<b>2 Points</b>	1 / 5	20
<b>3 Points</b>	1 / 1	100
<b>Free Throws</b>	2 / 3	67

#### 23 SILVA Sofia



	M / A	%
<b>Fied Goals</b>	3 / 6	50
<b>2 Points</b>	3 / 6	50
<b>3 Points</b>	0 / 0	0
<b>Free Throws</b>	0 / 0	0

#### 32 WHITE Chatrice



	M / A	%
<b>Fied Goals</b>	4 / 7	57
<b>2 Points</b>	3 / 6	50
<b>3 Points</b>	1 / 1	100
<b>Free Throws</b>	3 / 4	75

## Shot Chart

### DME 66 vs 55 MAGCB

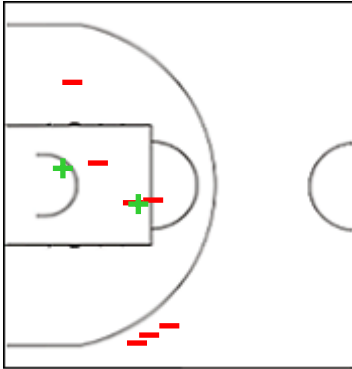
(19-10, 18-14, 15-14, 14-17)

Scoring by 5 min intervals:

	Q1		Q2		Q3		Q4	
DME	7	19	31	31	45	52	61	66
MAGCB	4	10	18	18	33	38	45	55

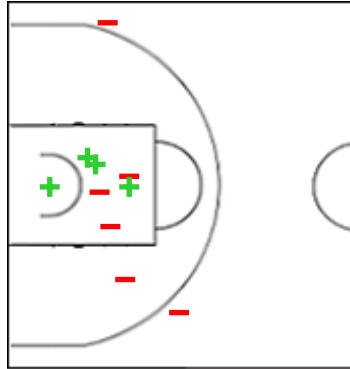
### MAGCB - La Molisana Campobasso

#### 5 TOGLIANI Anna



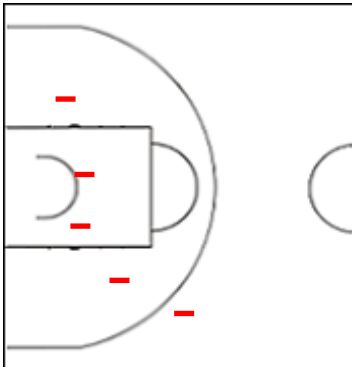
	M / A	%
Fied Goals	2 / 9	22
2 Points	2 / 6	33
3 Points	0 / 3	0
Free Throws	0 / 0	0

#### 7 PREMASUNAC Nina



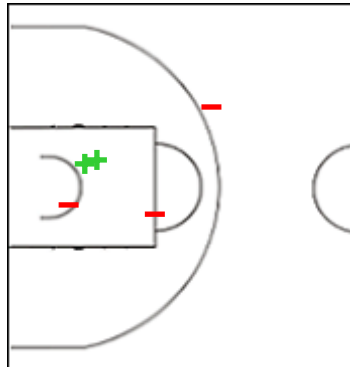
	M / A	%
Fied Goals	4 / 10	40
2 Points	4 / 8	50
3 Points	0 / 2	0
Free Throws	0 / 3	0

#### 9 TRIMBOLI Stefania



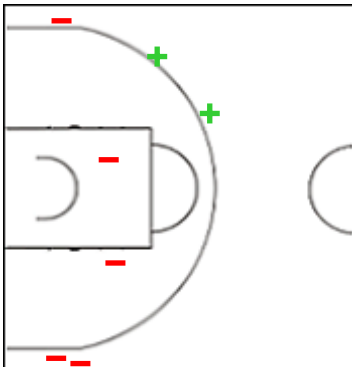
	M / A	%
Fied Goals	0 / 5	0
2 Points	0 / 4	0
3 Points	0 / 1	0
Free Throws	0 / 0	0

#### 11 QUIÑONEZ Blanca



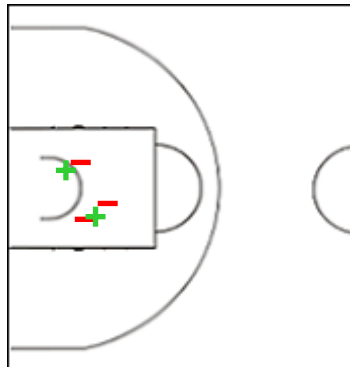
	M / A	%
Fied Goals	2 / 5	40
2 Points	2 / 4	50
3 Points	0 / 1	0
Free Throws	6 / 9	67

#### 14 CHAGAS Florencia



	M / A	%
Fied Goals	2 / 7	29
2 Points	0 / 2	0
3 Points	2 / 5	40
Free Throws	2 / 3	67

#### 17 NICOLODI Giuditta



	M / A	%
Fied Goals	2 / 5	40
2 Points	2 / 5	40
3 Points	0 / 0	0
Free Throws	4 / 4	100

## Shot Chart

### DME 66 vs 55 MAGCB

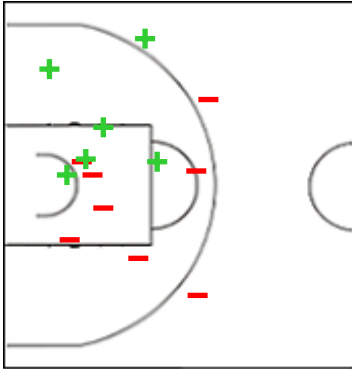
(19-10, 18-14, 15-14, 14-17)

Scoring by 5 min intervals:

	Q1		Q2		Q3		Q4	
<b>DME</b>	7	19	31	31	45	52	61	66
<b>MAGCB</b>	4	10	18	18	33	38	45	55

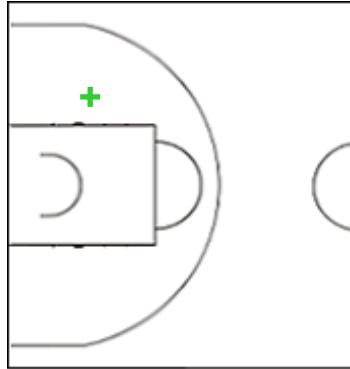
### MAGCB - La Molisana Campobasso

#### 24 PARKS Robyn



	M / A	%
<b>Fied Goals</b>	6 / 14	43
<b>2 Points</b>	5 / 11	45
<b>3 Points</b>	1 / 3	33
<b>Free Throws</b>	2 / 3	67

#### 28 EGWOH Ashley



	M / A	%
<b>Fied Goals</b>	1 / 1	100
<b>2 Points</b>	1 / 1	100
<b>3 Points</b>	0 / 0	0
<b>Free Throws</b>	0 / 0	0

## Shot Chart

### DME 66 vs 55 MAGCB

(19-10, 18-14, 15-14, 14-17)

Scoring by 5 min intervals:

	Q1		Q2		Q3		Q4	
<b>DME</b>	7	19	31	31	45	52	61	66
<b>MAGCB</b>	4	10	18	18	33	38	45	55

**DME - Ensino Lugo CB**

**MAGCB - La Molisana Campobasso**



	M / A	%
<b>Fied Goals</b>	24 / 51	47
<b>2 Points</b>	18 / 36	50
<b>3 Points</b>	6 / 15	40
<b>Free Throws</b>	12 / 20	60

%	M / A	
34	19 / 56	<b>Fied Goals</b>
39	16 / 41	<b>2 Points</b>
20	3 / 15	<b>3 Points</b>
64	14 / 22	<b>Free Throws</b>