



Shot Chart

JPN 87 vs 58 NZL

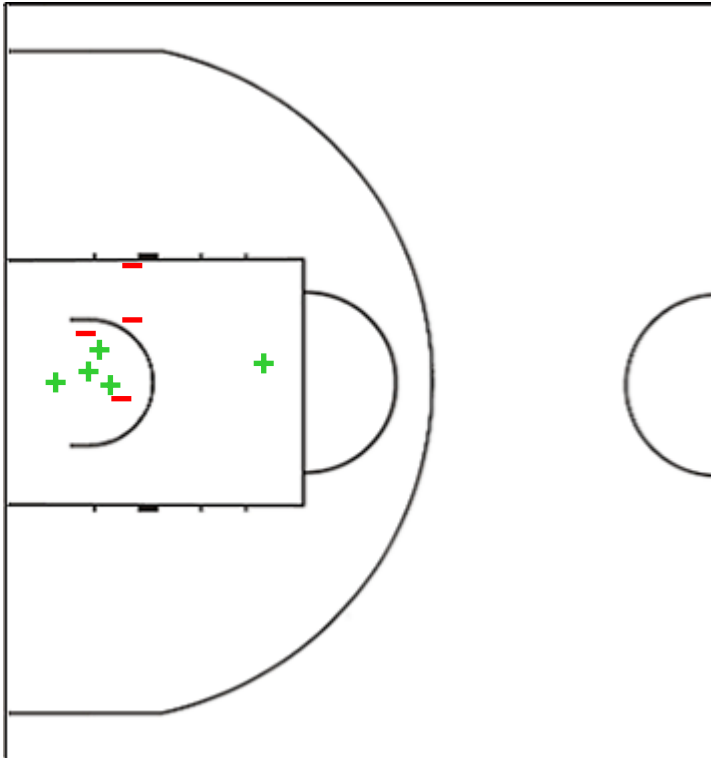
(24-15, 22-18, 24-10, 17-15)

Q1

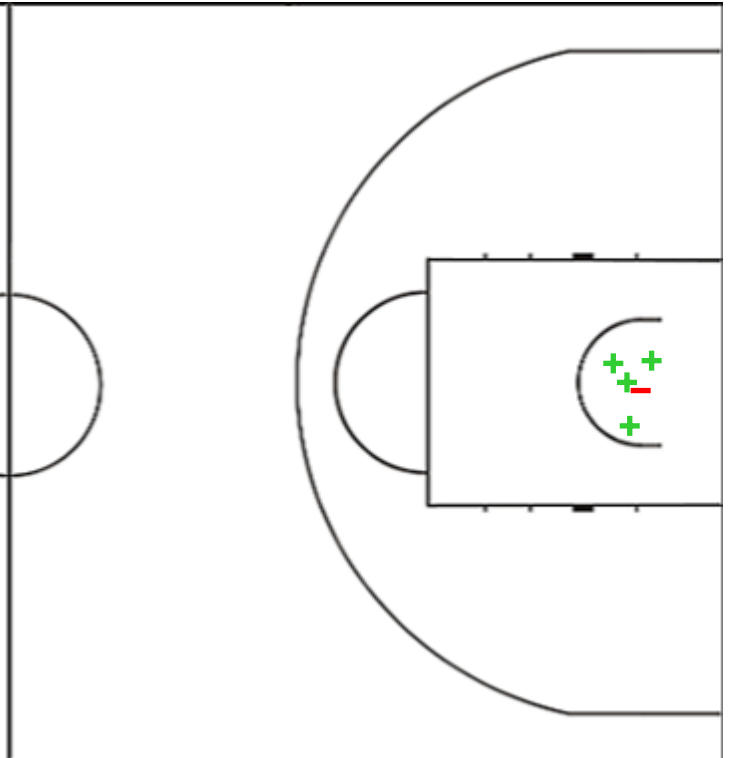
Scoring by 5 min intervals:

| | | |
|------------|----|----|
| JPN | 16 | 18 |
| NZL | 8 | 11 |

JPN - Japan



NZL - New Zealand



| JPN | M / A | % |
|-------------|---------|----|
| Fied Goals | 32 / 85 | 38 |
| 2 Points | 25 / 53 | 47 |
| 3 Points | 7 / 32 | 22 |
| Free Throws | 16 / 22 | 73 |

| % | M / A | NZL |
|----|---------|-------------|
| 38 | 21 / 56 | Fied Goals |
| 46 | 19 / 41 | 2 Points |
| 13 | 2 / 15 | 3 Points |
| 93 | 14 / 15 | Free Throws |



Shot Chart

JPN 87 vs 58 NZL

(24-15, 22-18, 24-10, 17-15)

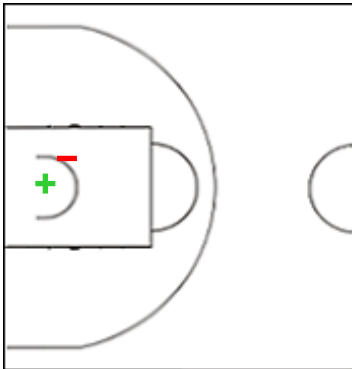
Q1

Scoring by 5 min intervals:

| | | |
|-----|----|----|
| JPN | 16 | 18 |
| NZL | 8 | 11 |

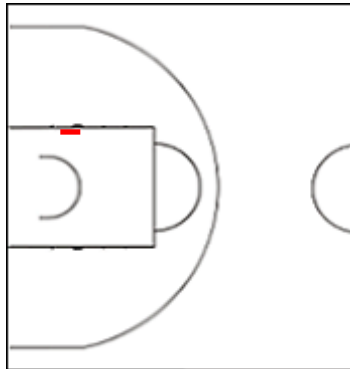
JPN - Japan

6 FUKUO Reina



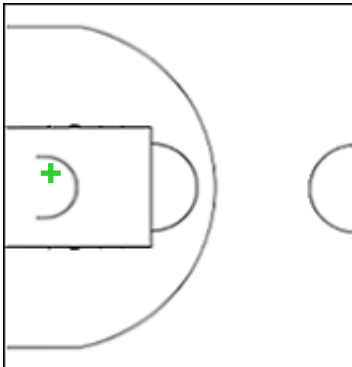
| | M / A | % |
|-------------|-------|----|
| Fied Goals | 4 / 9 | 44 |
| 2 Points | 4 / 9 | 44 |
| 3 Points | 0 / 0 | 0 |
| Free Throws | 0 / 0 | 0 |

13 HIGASHI Iroha



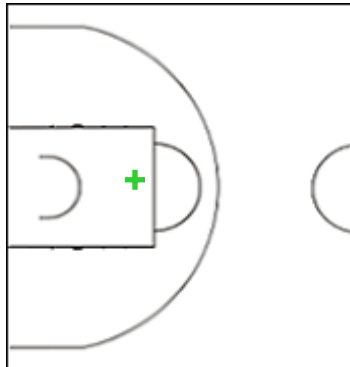
| | M / A | % |
|-------------|--------|----|
| Fied Goals | 2 / 13 | 15 |
| 2 Points | 1 / 2 | 50 |
| 3 Points | 1 / 11 | 9 |
| Free Throws | 0 / 0 | 0 |

14 UENO Kokone



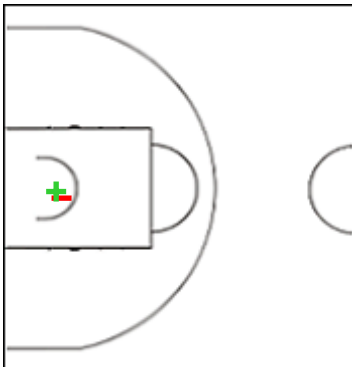
| | M / A | % |
|-------------|--------|----|
| Fied Goals | 5 / 10 | 50 |
| 2 Points | 2 / 4 | 50 |
| 3 Points | 3 / 6 | 50 |
| Free Throws | 1 / 2 | 50 |

15 KUROKAWA Kokone



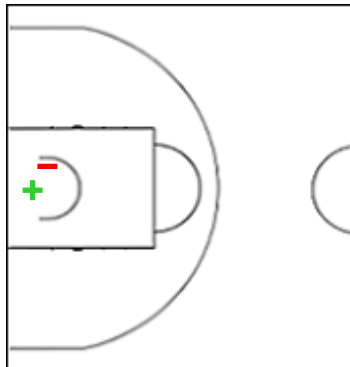
| | M / A | % |
|-------------|--------|----|
| Fied Goals | 4 / 11 | 36 |
| 2 Points | 4 / 8 | 50 |
| 3 Points | 0 / 3 | 0 |
| Free Throws | 1 / 2 | 50 |

55 TANAKA Kokoro



| | M / A | % |
|-------------|-------|-----|
| Fied Goals | 3 / 7 | 43 |
| 2 Points | 2 / 4 | 50 |
| 3 Points | 1 / 3 | 33 |
| Free Throws | 3 / 3 | 100 |

91 FUKATSU Yuina



| | M / A | % |
|-------------|-------|----|
| Fied Goals | 4 / 8 | 50 |
| 2 Points | 4 / 6 | 67 |
| 3 Points | 0 / 2 | 0 |
| Free Throws | 3 / 5 | 60 |



Shot Chart

JPN 87 vs 58 NZL

(24-15, 22-18, 24-10, 17-15)

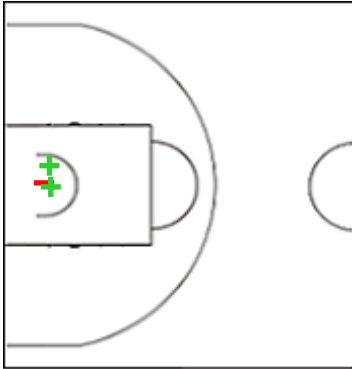
Q1

Scoring by 5 min intervals:

| | | |
|------------|----|----|
| JPN | 16 | 18 |
| NZL | 8 | 11 |

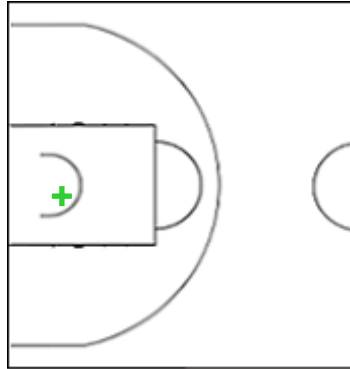
NZL - New Zealand

9 TAULELEI Lilly



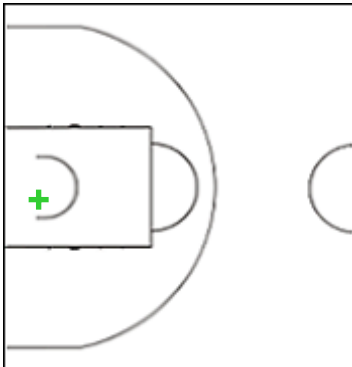
| | M / A | % |
|--------------------|--------|-----|
| Fied Goals | 3 / 14 | 21 |
| 2 Points | 3 / 13 | 23 |
| 3 Points | 0 / 1 | 0 |
| Free Throws | 2 / 2 | 100 |

15 TAMILO Ritorya



| | M / A | % |
|--------------------|-------|-----|
| Fied Goals | 1 / 2 | 50 |
| 2 Points | 1 / 2 | 50 |
| 3 Points | 0 / 0 | 0 |
| Free Throws | 1 / 1 | 100 |

23 WILLIAMS Karereatua



| | M / A | % |
|--------------------|-------|-----|
| Fied Goals | 3 / 4 | 75 |
| 2 Points | 3 / 3 | 100 |
| 3 Points | 0 / 1 | 0 |
| Free Throws | 0 / 0 | 0 |



Shot Chart

JPN 87 vs 58 NZL

(24-15, 22-18, 24-10, 17-15)

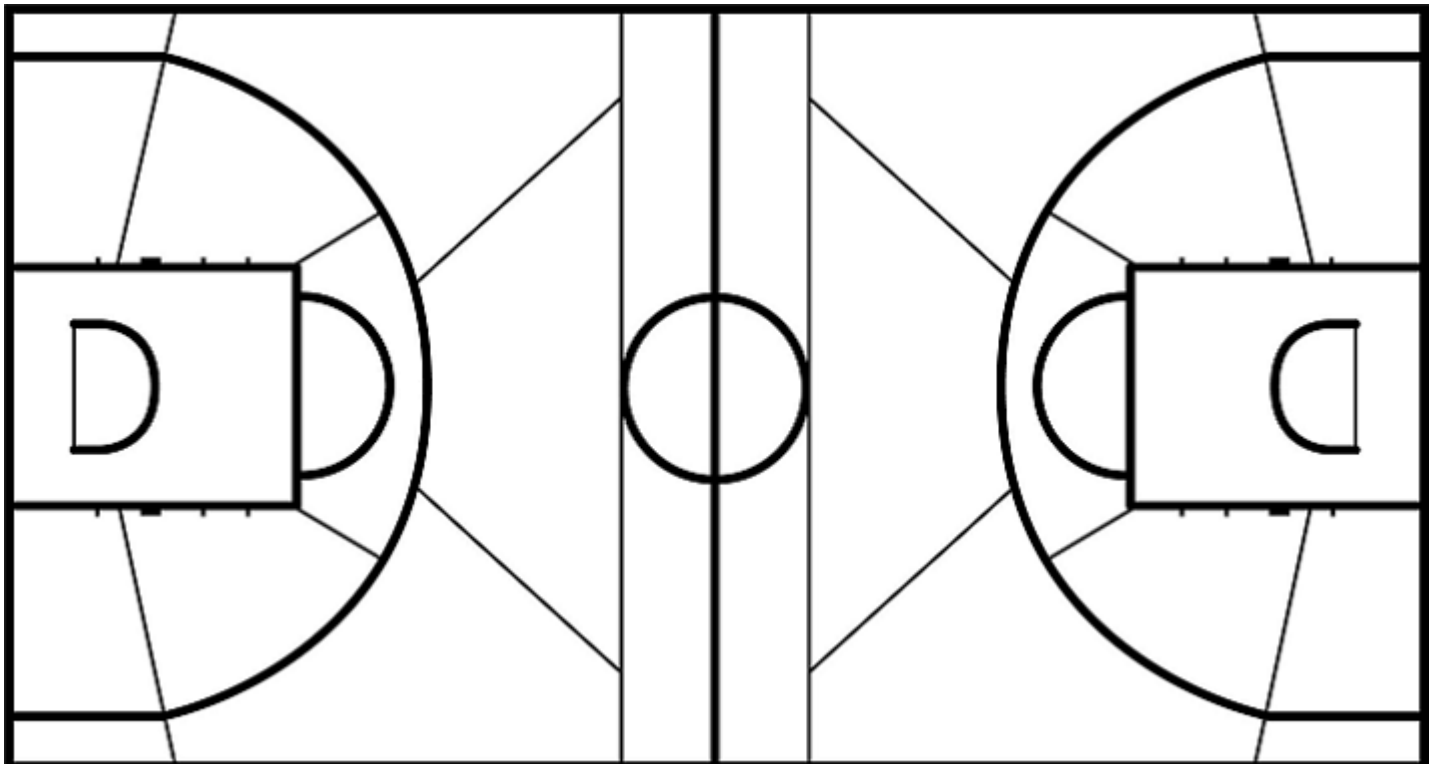
Q1

Scoring by 5 min intervals:

| | | |
|------------|----|----|
| JPN | 16 | 18 |
| NZL | 8 | 11 |

JPN - Japan

NZL - New Zealand



| | M / A | % |
|--------------------|---------|----|
| Fied Goals | 32 / 85 | 38 |
| 2 Points | 25 / 53 | 47 |
| 3 Points | 7 / 32 | 22 |
| Free Throws | 16 / 22 | 73 |

| % | M / A | |
|----|---------|--------------------|
| 38 | 21 / 56 | Fied Goals |
| 46 | 19 / 41 | 2 Points |
| 13 | 2 / 15 | 3 Points |
| 93 | 14 / 15 | Free Throws |