



## Shot Chart

### SAM 65 vs 94 PHI

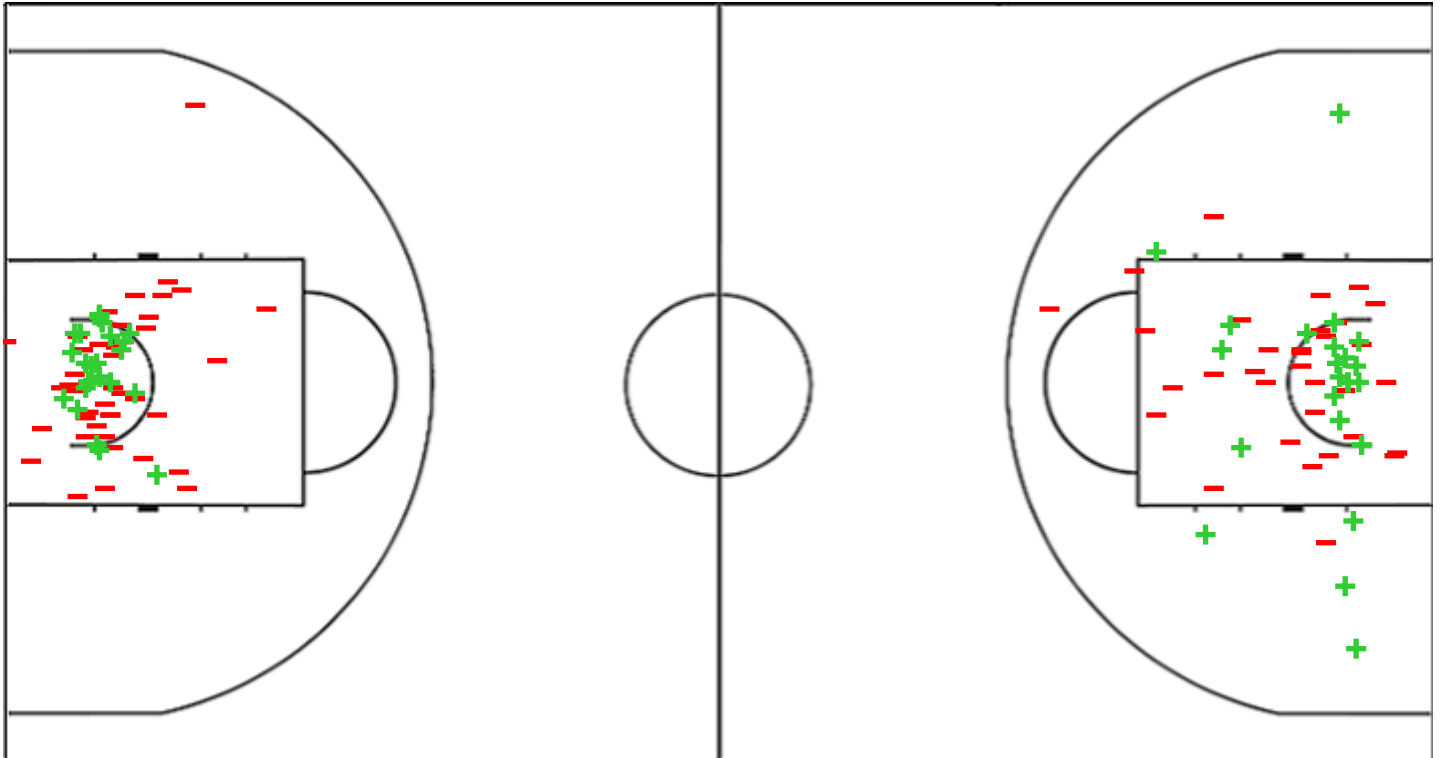
(19-26, 15-23, 18-22, 13-23)

Scoring by 5 min intervals:

	Q1		Q2		Q3		Q4	
<b>SAM</b>	10	19	25	34	42	52	59	65
<b>PHI</b>	17	26	37	49	64	71	83	94

SAM - Samoa

PHI - Philippines



<b>SAM</b>	M / A	%
Fied Goals	24 / 78	31
2 Points	23 / 68	34
3 Points	1 / 10	10
Free Throws	16 / 26	62

%	M / A	<b>PHI</b>
39	37 / 96	Fied Goals
41	23 / 56	2 Points
35	14 / 40	3 Points
55	6 / 11	Free Throws



Shot Chart

SAM 65 vs 94 PHI

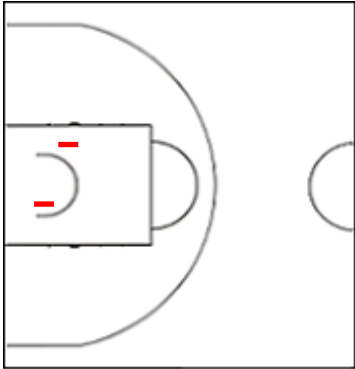
(19-26, 15-23, 18-22, 13-23)

Scoring by 5 min intervals:

	Q1		Q2		Q3		Q4	
<b>SAM</b>	10	19	25	34	42	52	59	65
<b>PHI</b>	17	26	37	49	64	71	83	94

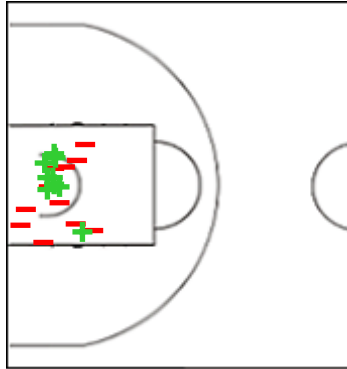
SAM - Samoa

0 TALOSAGA Madison



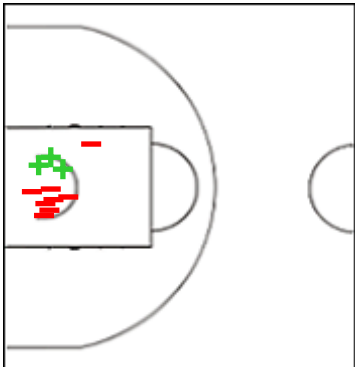
	M / A	%
Fied Goals	0 / 2	0
2 Points	0 / 2	0
3 Points	0 / 0	0
Free Throws	0 / 0	0

1 FILEMU Kira-May



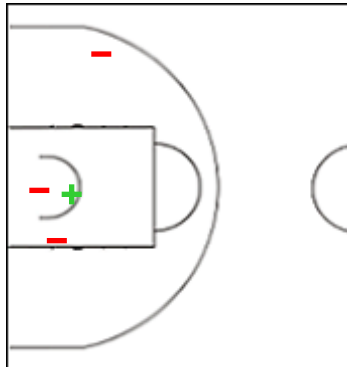
	M / A	%
Fied Goals	10 / 29	34
2 Points	9 / 20	45
3 Points	1 / 9	11
Free Throws	7 / 9	78

2 TUTANI Sienna



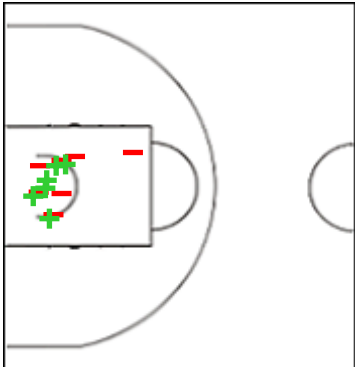
	M / A	%
Fied Goals	3 / 11	27
2 Points	3 / 11	27
3 Points	0 / 0	0
Free Throws	3 / 6	50

4 HOGBEN Kalena



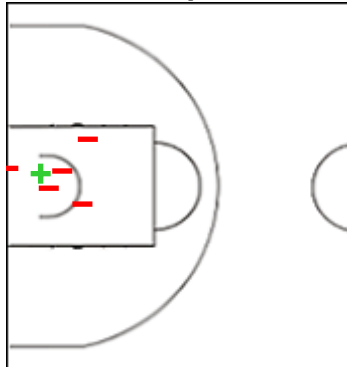
	M / A	%
Fied Goals	1 / 4	25
2 Points	1 / 4	25
3 Points	0 / 0	0
Free Throws	0 / 0	0

8 OLOAPU AZALEEAH



	M / A	%
Fied Goals	6 / 13	46
2 Points	6 / 13	46
3 Points	0 / 0	0
Free Throws	6 / 11	55

11 HIKO Caprice



	M / A	%
Fied Goals	1 / 6	17
2 Points	1 / 6	17
3 Points	0 / 0	0
Free Throws	0 / 0	0



## Shot Chart

### SAM 65 vs 94 PHI

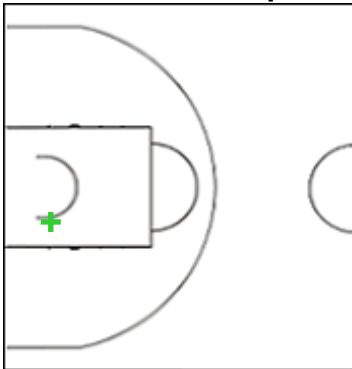
(19-26, 15-23, 18-22, 13-23)

Scoring by 5 min intervals:

	Q1		Q2		Q3		Q4	
<b>SAM</b>	10	19	25	34	42	52	59	65
<b>PHI</b>	17	26	37	49	64	71	83	94

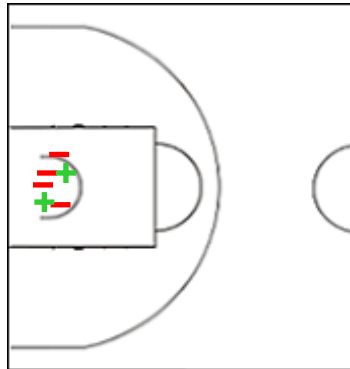
### SAM - Samoa

#### 12 WALSHE Luaipou



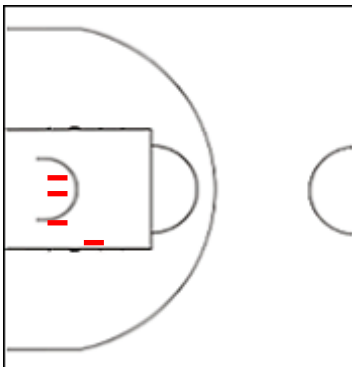
	M / A	%
Fied Goals	1 / 1	100
2 Points	1 / 1	100
3 Points	0 / 0	0
Free Throws	0 / 0	0

#### 17 KERESOMA AALIYAH



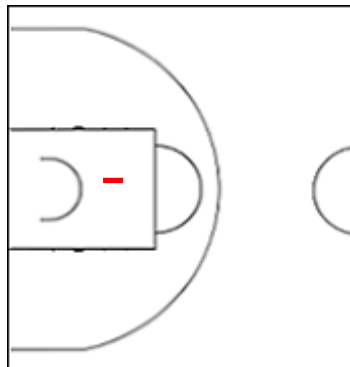
	M / A	%
Fied Goals	2 / 7	29
2 Points	2 / 6	33
3 Points	0 / 1	0
Free Throws	0 / 0	0

#### 22 BROWN Lailani



	M / A	%
Fied Goals	0 / 4	0
2 Points	0 / 4	0
3 Points	0 / 0	0
Free Throws	0 / 0	0

#### 32 KILIVA Giselle



	M / A	%
Fied Goals	0 / 1	0
2 Points	0 / 1	0
3 Points	0 / 0	0
Free Throws	0 / 0	0



Shot Chart

SAM 65 vs 94 PHI

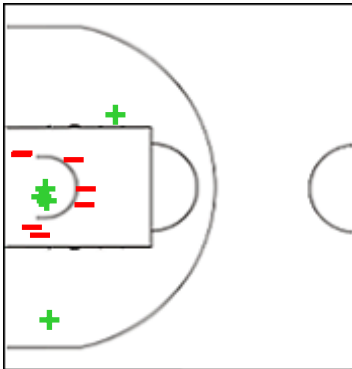
(19-26, 15-23, 18-22, 13-23)

Scoring by 5 min intervals:

	Q1		Q2		Q3		Q4	
<b>SAM</b>	10	19	25	34	42	52	59	65
<b>PHI</b>	17	26	37	49	64	71	83	94

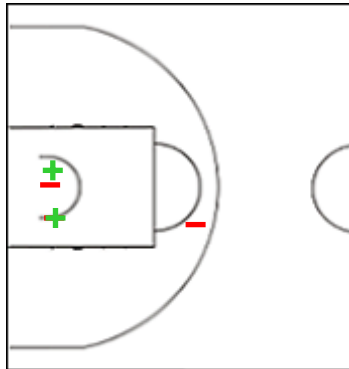
PHI - Philippines

2 PANGANIBAN Naomi Natalie



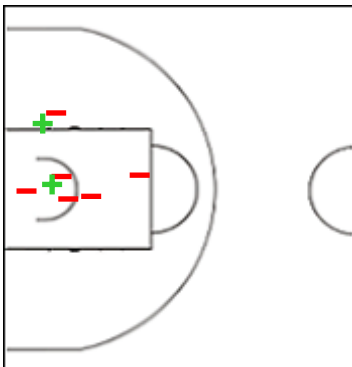
	M / A	%
Fied Goals	6 / 18	33
2 Points	5 / 12	42
3 Points	1 / 6	17
Free Throws	1 / 1	100

3 FAJARDO Ava Camryn



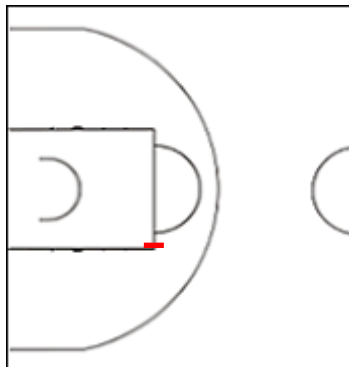
	M / A	%
Fied Goals	3 / 7	43
2 Points	2 / 5	40
3 Points	1 / 2	50
Free Throws	1 / 2	50

4 RAMOS Gabriella



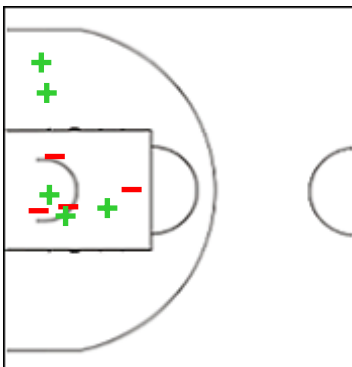
	M / A	%
Fied Goals	2 / 9	22
2 Points	2 / 8	25
3 Points	0 / 1	0
Free Throws	0 / 0	0

5 LOPEZ Hannah



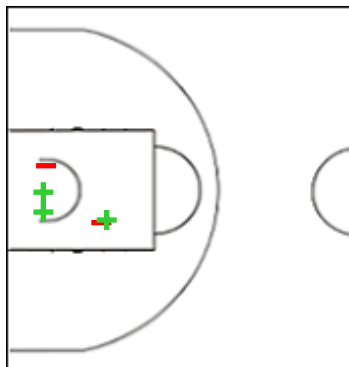
	M / A	%
Fied Goals	0 / 2	0
2 Points	0 / 1	0
3 Points	0 / 1	0
Free Throws	0 / 0	0

7 VILLARIN Princess BJ Marie



	M / A	%
Fied Goals	6 / 10	60
2 Points	5 / 9	56
3 Points	1 / 1	100
Free Throws	0 / 2	0

8 MEDINA Samantha Paulene



	M / A	%
Fied Goals	3 / 5	60
2 Points	3 / 5	60
3 Points	0 / 0	0
Free Throws	3 / 3	100



## Shot Chart

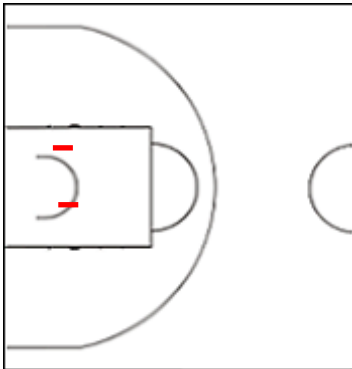
### SAM 65 vs 94 PHI

(19-26, 15-23, 18-22, 13-23)

		Q1		Q2		Q3		Q4	
Scoring by 5 min intervals:	<b>SAM</b>	10	19	25	34	42	52	59	65
	<b>PHI</b>	17	26	37	49	64	71	83	94

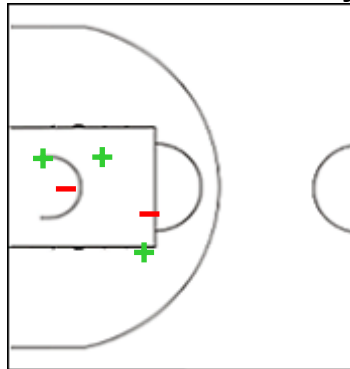
### PHI - Philippines

#### 12 NOLASCO Dianne Camille



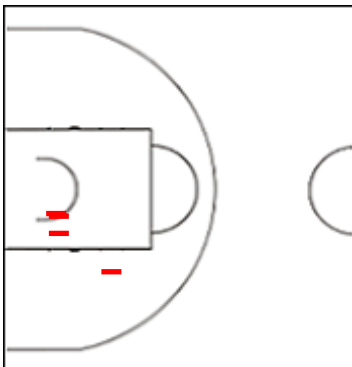
	M / A	%
Fied Goals	3 / 9	33
2 Points	0 / 2	0
3 Points	3 / 7	43
Free Throws	0 / 0	0

#### 20 YUMUL Kristan Geyl



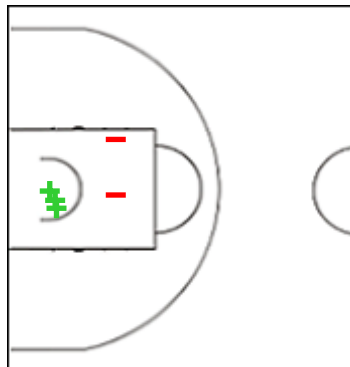
	M / A	%
Fied Goals	8 / 21	38
2 Points	3 / 5	60
3 Points	5 / 16	31
Free Throws	1 / 1	100

#### 22 PATRICIO Sierra Jade



	M / A	%
Fied Goals	1 / 5	20
2 Points	0 / 4	0
3 Points	1 / 1	100
Free Throws	0 / 2	0

#### 24 OANI Kailah Jade



	M / A	%
Fied Goals	4 / 7	57
2 Points	3 / 5	60
3 Points	1 / 2	50
Free Throws	0 / 0	0



## Shot Chart

### SAM 65 vs 94 PHI

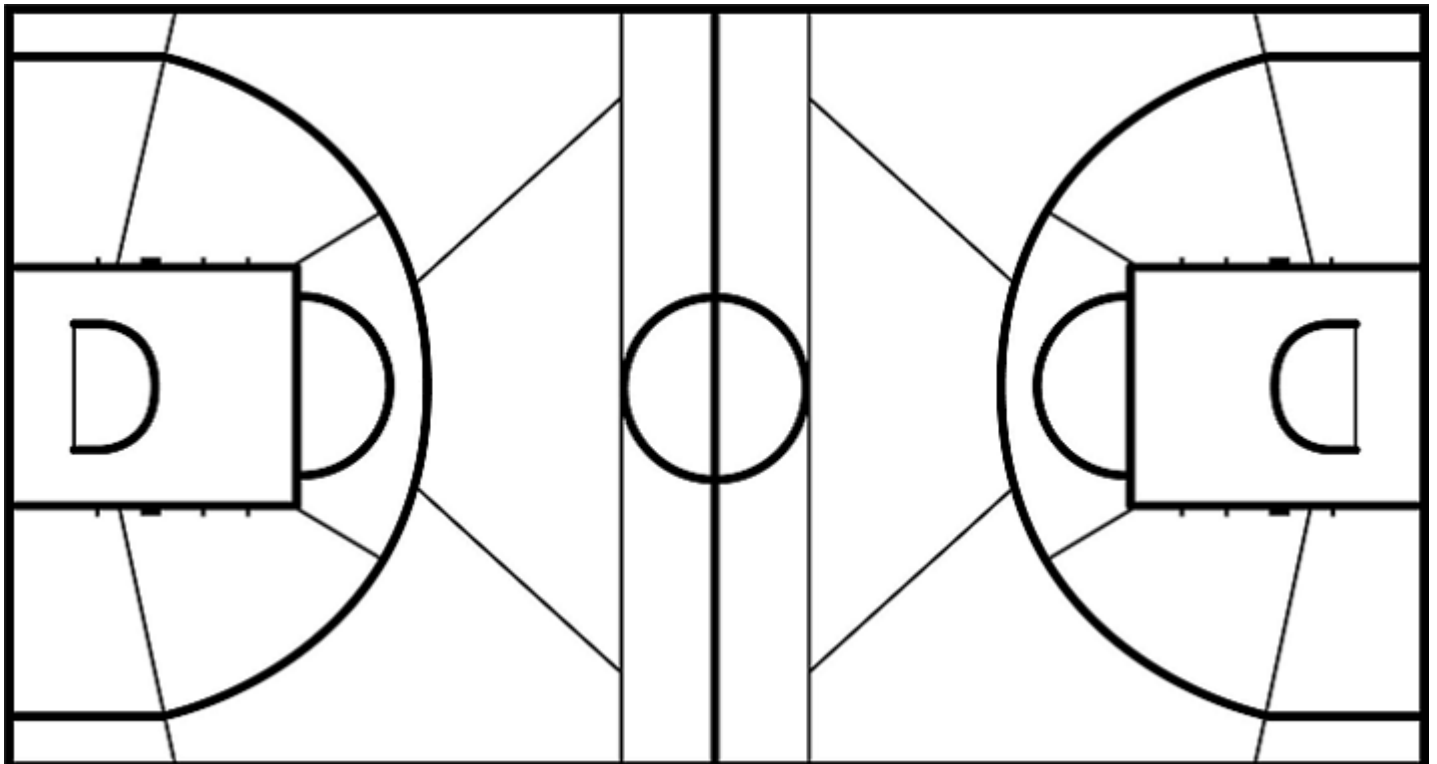
(19-26, 15-23, 18-22, 13-23)

Scoring by 5 min intervals:

	Q1		Q2		Q3		Q4	
<b>SAM</b>	10	19	25	34	42	52	59	65
<b>PHI</b>	17	26	37	49	64	71	83	94

**SAM - Samoa**

**PHI - Philippines**



	M / A	%
<b>Fied Goals</b>	24 / 78	31
<b>2 Points</b>	23 / 68	34
<b>3 Points</b>	1 / 10	10
<b>Free Throws</b>	16 / 26	62

%	M / A	
39	37 / 96	<b>Fied Goals</b>
41	23 / 56	<b>2 Points</b>
35	14 / 40	<b>3 Points</b>
55	6 / 11	<b>Free Throws</b>