



Liga Sudamericana de Clubes Femenina 2022

Venue: CEF N°3
 Game Date: THU 28 APR 2022
 Game Time: 21:30

Game No: A/2
 Attendance: 0
 Game Duration: 02:06

Shot Chart

ROC 55 vs 53 CSI

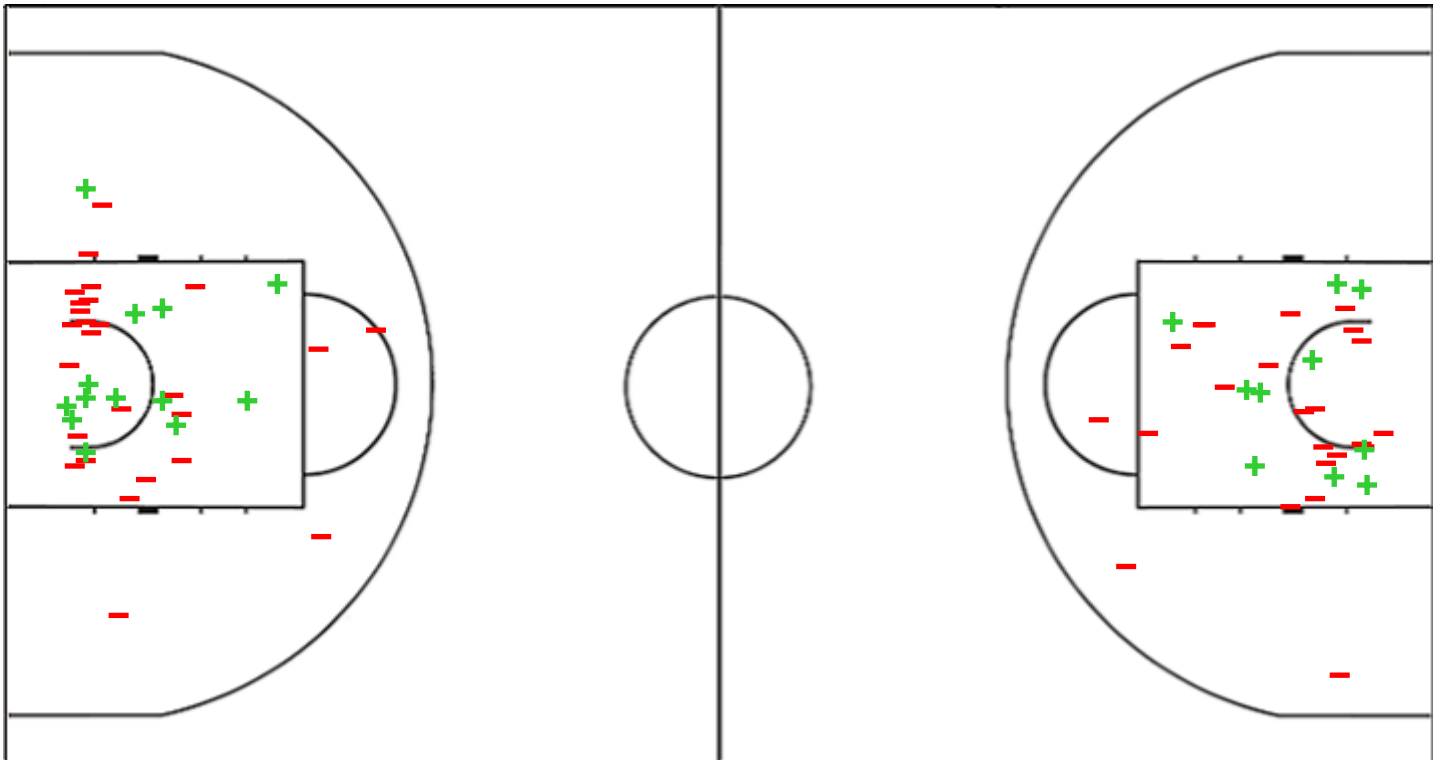
(5-14, 12-16, 18-9, 20-14)

Scoring by 5 min intervals:

| | Q1 | | Q2 | | Q3 | | Q4 | |
|------------|----|----|----|----|----|----|----|----|
| Club Tomas | 3 | 5 | 12 | 17 | 22 | 35 | 43 | 55 |
| CSI | 6 | 14 | 19 | 30 | 34 | 39 | 44 | 53 |

ROC - Club Tomas de Rocamora

CSI - Sportiva Italiana



| ROC | M / A | % |
|-------------|---------|----|
| Fied Goals | 18 / 65 | 28 |
| 2 Points | 13 / 39 | 33 |
| 3 Points | 5 / 26 | 19 |
| Free Throws | 14 / 22 | 64 |

| % | M / A | CSI |
|----|---------|-------------|
| 27 | 18 / 66 | Fied Goals |
| 30 | 10 / 33 | 2 Points |
| 24 | 8 / 33 | 3 Points |
| 50 | 9 / 18 | Free Throws |



Liga Sudamericana de Clubes Femenina 2022

Venue: CEF N°3
 Game Date: THU 28 APR 2022
 Game Time: 21:30

Game No: A/2
 Attendance: 0
 Game Duration: 02:06

Shot Chart

ROC 55 vs 53 CSI

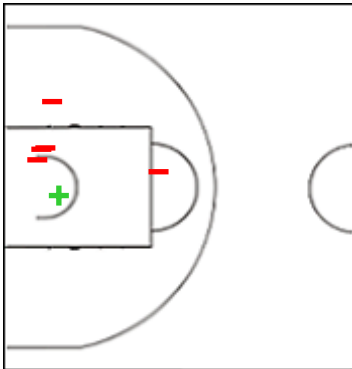
(5-14, 12-16, 18-9, 20-14)

Scoring by 5 min intervals:

| | Q1 | | Q2 | | Q3 | | Q4 | |
|------------|----|----|----|----|----|----|----|----|
| Club Tomas | 3 | 5 | 12 | 17 | 22 | 35 | 43 | 55 |
| CSI | 6 | 14 | 19 | 30 | 34 | 39 | 44 | 53 |

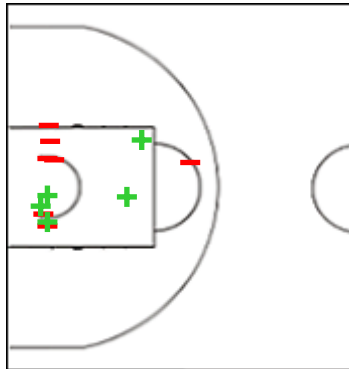
ROC - Club Tomas de Rocamora

3 GONZALEZ Antonella



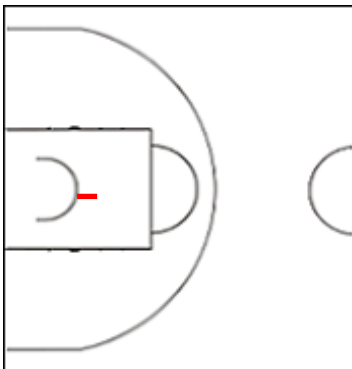
| | M / A | % |
|-------------|-------|----|
| Fied Goals | 2 / 9 | 22 |
| 2 Points | 1 / 6 | 17 |
| 3 Points | 1 / 3 | 33 |
| Free Throws | 1 / 4 | 25 |

5 DIAZ Rocio



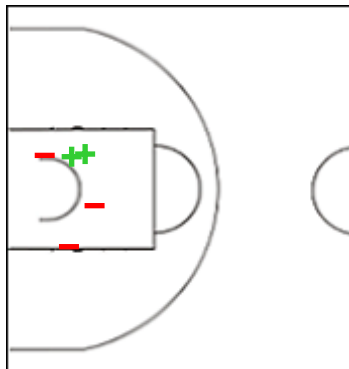
| | M / A | % |
|-------------|--------|----|
| Fied Goals | 6 / 20 | 30 |
| 2 Points | 5 / 12 | 42 |
| 3 Points | 1 / 8 | 13 |
| Free Throws | 5 / 7 | 71 |

6 FIGUEROA Irina



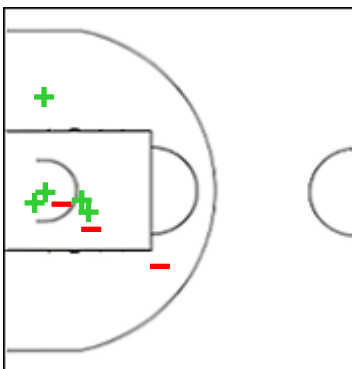
| | M / A | % |
|-------------|-------|----|
| Fied Goals | 1 / 5 | 20 |
| 2 Points | 0 / 1 | 0 |
| 3 Points | 1 / 4 | 25 |
| Free Throws | 0 / 0 | 0 |

8 LARA Victoria



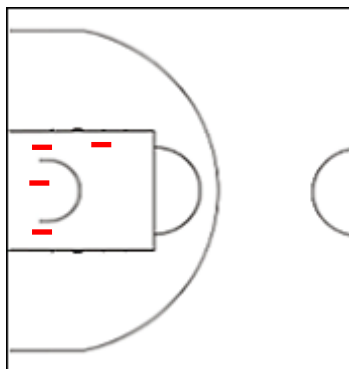
| | M / A | % |
|-------------|-------|----|
| Fied Goals | 2 / 9 | 22 |
| 2 Points | 2 / 5 | 40 |
| 3 Points | 0 / 4 | 0 |
| Free Throws | 0 / 0 | 0 |

10 AYALA Ailen



| | M / A | % |
|-------------|-------|----|
| Fied Goals | 5 / 8 | 63 |
| 2 Points | 5 / 8 | 63 |
| 3 Points | 0 / 0 | 0 |
| Free Throws | 2 / 3 | 67 |

11 MICULKA Carla



| | M / A | % |
|-------------|-------|----|
| Fied Goals | 0 / 4 | 0 |
| 2 Points | 0 / 4 | 0 |
| 3 Points | 0 / 0 | 0 |
| Free Throws | 1 / 2 | 50 |



Liga Sudamericana de Clubes Femenina 2022

Venue: CEF N°3
Game Date: THU 28 APR 2022
Game Time: 21:30

Game No: A/2
Attendance: 0
Game Duration: 02:06

Shot Chart

ROC 55 vs 53 CSI

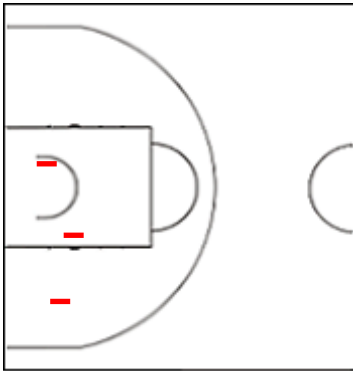
(5-14, 12-16, 18-9, 20-14)

Scoring by 5 min intervals:

| | Q1 | | Q2 | | Q3 | | Q4 | |
|-------------------|----|----|----|----|----|----|----|----|
| Club Tomas | 3 | 5 | 12 | 17 | 22 | 35 | 43 | 55 |
| CSI | 6 | 14 | 19 | 30 | 34 | 39 | 44 | 53 |

ROC - Club Tomas de Rocamora

12 SCEVOLA Sabrina



| | M / A | % |
|--------------------|--------|----|
| Fied Goals | 2 / 10 | 20 |
| 2 Points | 0 / 3 | 0 |
| 3 Points | 2 / 7 | 29 |
| Free Throws | 5 / 6 | 83 |



Liga Sudamericana de Clubes Femenina 2022

Venue: CEF N°3
 Game Date: THU 28 APR 2022
 Game Time: 21:30

Game No: A/2
 Attendance: 0
 Game Duration: 02:06

Shot Chart

ROC 55 vs 53 CSI

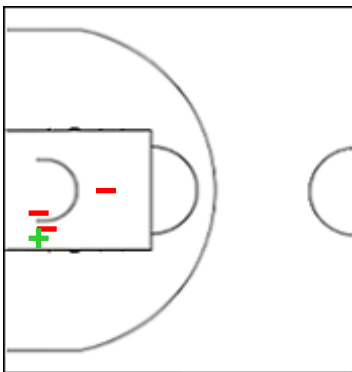
(5-14, 12-16, 18-9, 20-14)

Scoring by 5 min intervals:

| | Q1 | | Q2 | | Q3 | | Q4 | |
|------------|----|----|----|----|----|----|----|----|
| Club Tomas | 3 | 5 | 12 | 17 | 22 | 35 | 43 | 55 |
| CSI | 6 | 14 | 19 | 30 | 34 | 39 | 44 | 53 |

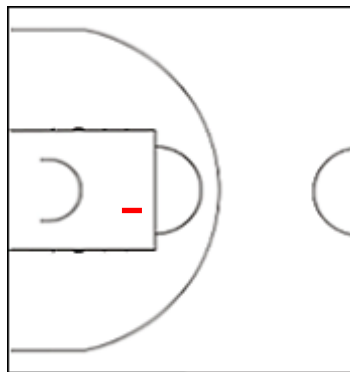
CSI - Sportiva Italiana

1 GARCIA Thiare



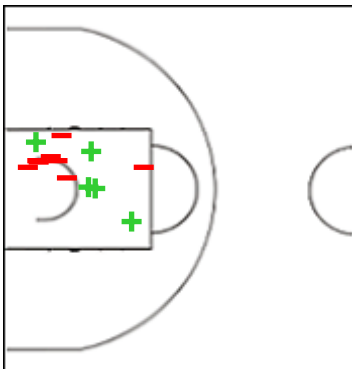
| | M / A | % |
|-------------|--------|----|
| Fied Goals | 3 / 12 | 25 |
| 2 Points | 1 / 4 | 25 |
| 3 Points | 2 / 8 | 25 |
| Free Throws | 1 / 4 | 25 |

4 MOYANO Tatiana



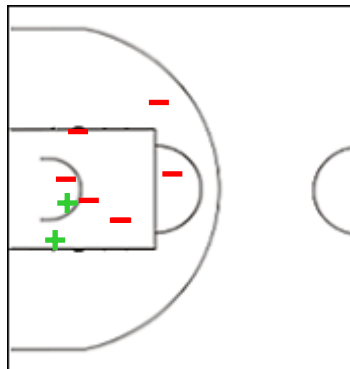
| | M / A | % |
|-------------|-------|---|
| Fied Goals | 0 / 6 | 0 |
| 2 Points | 0 / 1 | 0 |
| 3 Points | 0 / 5 | 0 |
| Free Throws | 0 / 0 | 0 |

7 PEREZ VALDES Catalina



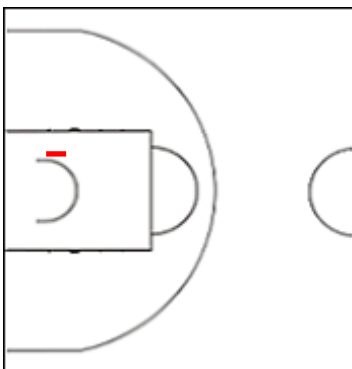
| | M / A | % |
|-------------|--------|----|
| Fied Goals | 5 / 17 | 29 |
| 2 Points | 5 / 13 | 38 |
| 3 Points | 0 / 4 | 0 |
| Free Throws | 4 / 6 | 67 |

9 DIAZ ROJAS renata antonia



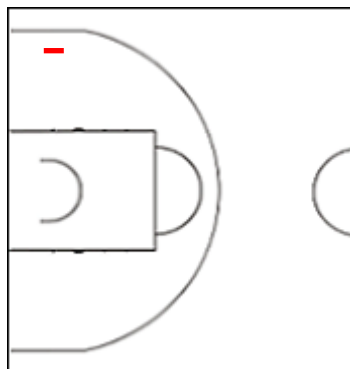
| | M / A | % |
|-------------|--------|-----|
| Fied Goals | 3 / 10 | 30 |
| 2 Points | 2 / 9 | 22 |
| 3 Points | 1 / 1 | 100 |
| Free Throws | 2 / 2 | 100 |

12 CARRASCO CARRASCO



| | M / A | % |
|-------------|-------|----|
| Fied Goals | 2 / 4 | 50 |
| 2 Points | 0 / 1 | 0 |
| 3 Points | 2 / 3 | 67 |
| Free Throws | 0 / 0 | 0 |

15 CABRERA Martina



| | M / A | % |
|-------------|-------|---|
| Fied Goals | 0 / 1 | 0 |
| 2 Points | 0 / 1 | 0 |
| 3 Points | 0 / 0 | 0 |
| Free Throws | 0 / 0 | 0 |



Liga Sudamericana de Clubes Femenina 2022

Venue: CEF N°3
Game Date: THU 28 APR 2022
Game Time: 21:30

Game No: A/2
Attendance: 0
Game Duration: 02:06

Shot Chart

ROC 55 vs 53 CSI

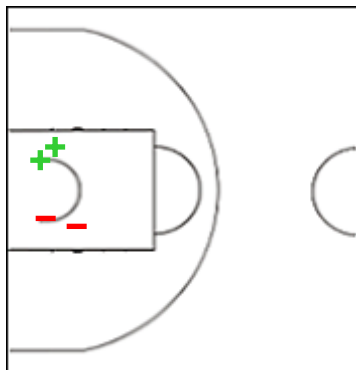
(5-14, 12-16, 18-9, 20-14)

Scoring by 5 min intervals:

| | Q1 | | Q2 | | Q3 | | Q4 | |
|-------------------|----|----|----|----|----|----|----|----|
| Club Tomas | 3 | 5 | 12 | 17 | 22 | 35 | 43 | 55 |
| CSI | 6 | 14 | 19 | 30 | 34 | 39 | 44 | 53 |

CSI - Sportiva Italiana

24 GARAY Valentina



| | M / A | % |
|--------------------|-------|----|
| Fied Goals | 2 / 6 | 33 |
| 2 Points | 2 / 4 | 50 |
| 3 Points | 0 / 2 | 0 |
| Free Throws | 2 / 6 | 33 |



Liga Sudamericana de Clubes Femenina 2022

Venue: CEF N°3
 Game Date: THU 28 APR 2022
 Game Time: 21:30

Game No: A/2
 Attendance: 0
 Game Duration: 02:06

Shot Chart

ROC 55 vs 53 CSI

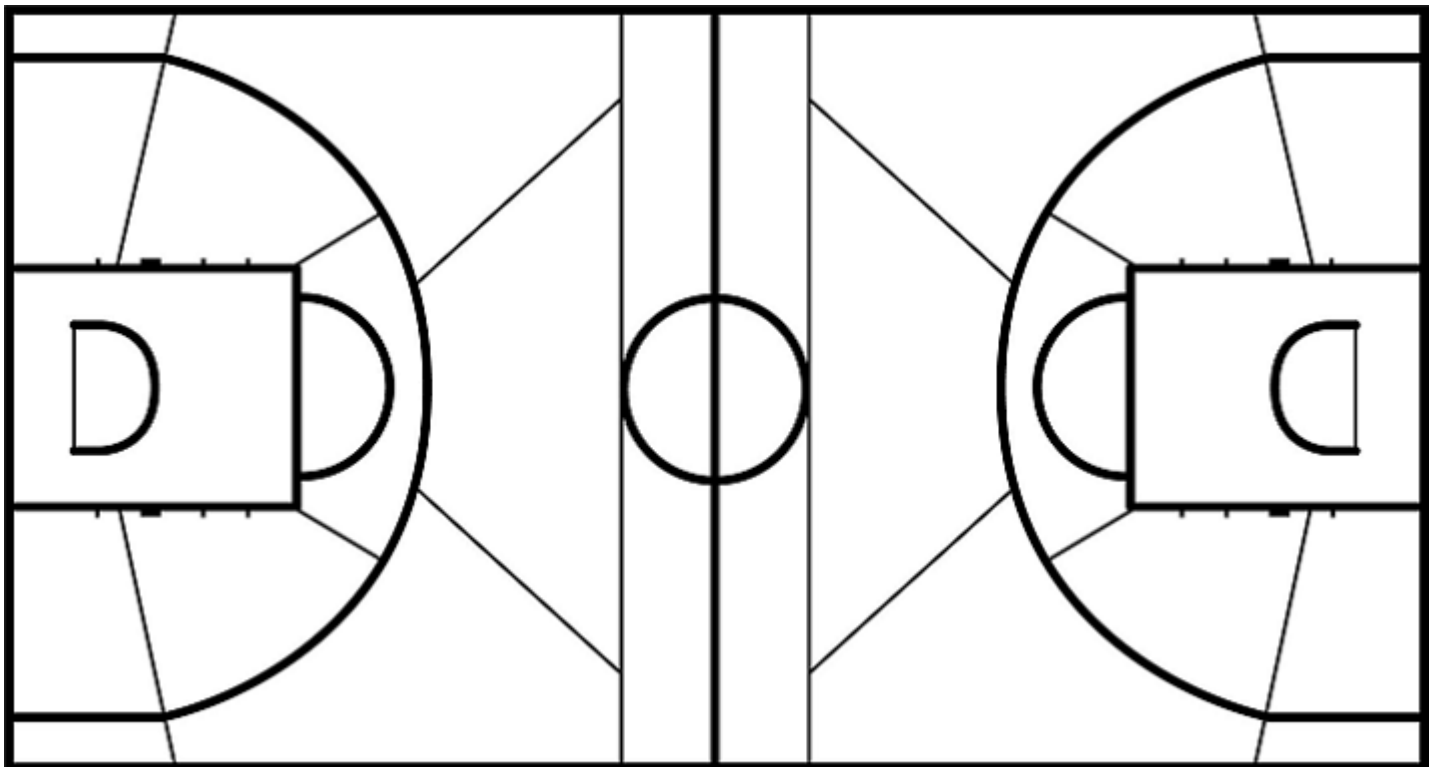
(5-14, 12-16, 18-9, 20-14)

Scoring by 5 min intervals:

| | Q1 | | Q2 | | Q3 | | Q4 | |
|------------|----|----|----|----|----|----|----|----|
| Club Tomas | 3 | 5 | 12 | 17 | 22 | 35 | 43 | 55 |
| CSI | 6 | 14 | 19 | 30 | 34 | 39 | 44 | 53 |

ROC - Club Tomas de Rocamora

CSI - Sportiva Italiana



| | M / A | % |
|-------------|---------|----|
| Fied Goals | 18 / 65 | 28 |
| 2 Points | 13 / 39 | 33 |
| 3 Points | 5 / 26 | 19 |
| Free Throws | 14 / 22 | 64 |

| % | M / A | |
|----|---------|-------------|
| 27 | 18 / 66 | Fied Goals |
| 30 | 10 / 33 | 2 Points |
| 24 | 8 / 33 | 3 Points |
| 50 | 9 / 18 | Free Throws |