

Shot Chart

PAN 74 vs 80 DOM

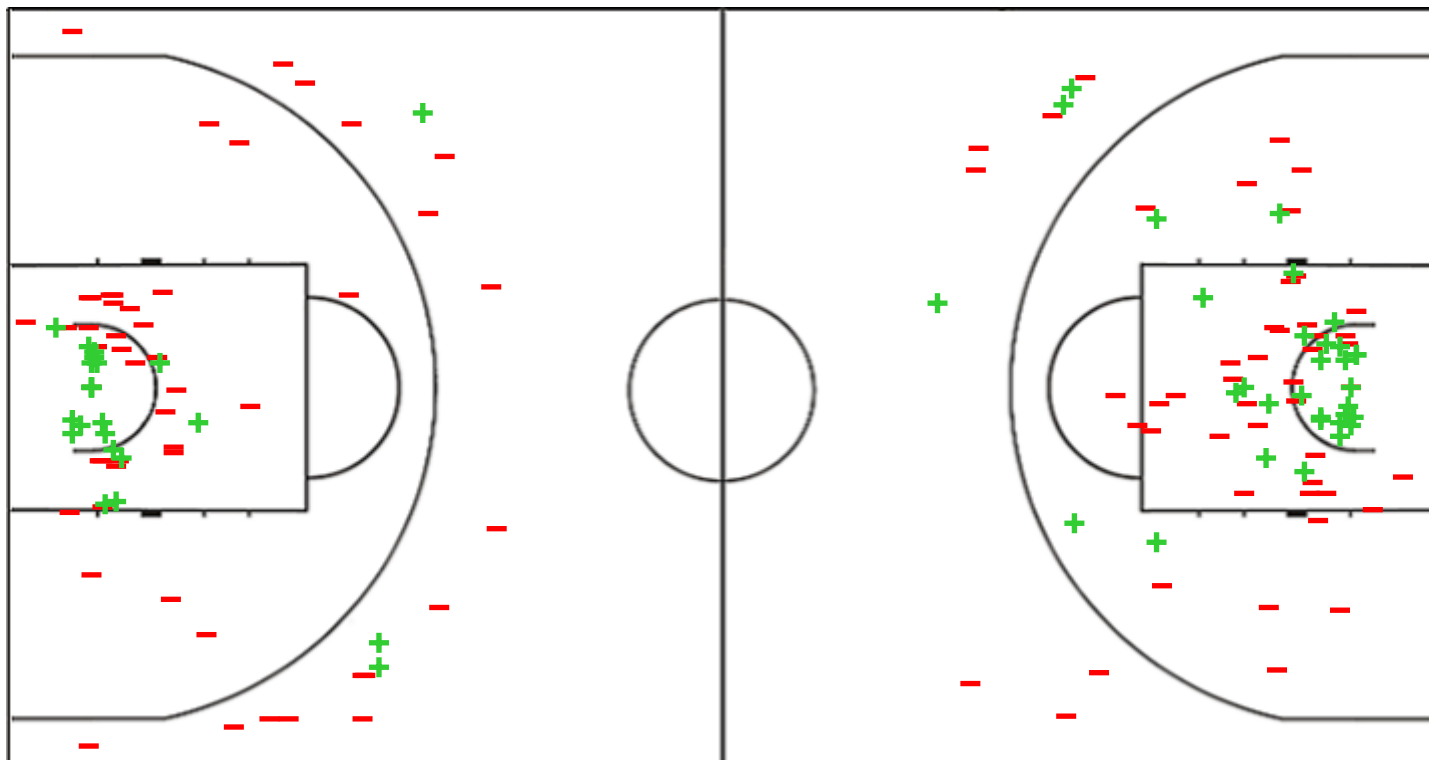
(15-20, 19-13, 20-19, 20-28)

Scoring by 5 min intervals:

	Q1		Q2		Q3		Q4	
PAN	8	15	26	34	45	54	61	74
DOM	6	20	27	33	41	52	68	80

PAN - Panama

DOM - Dominican Republic



PAN	M / A	%
Fied Goals	24 / 74	32
2 Points	21 / 55	38
3 Points	3 / 19	16
Free Throws	23 / 36	64

%	M / A	DOM
40	32 / 81	Fied Goals
41	29 / 71	2 Points
30	3 / 10	3 Points
52	13 / 25	Free Throws

Shot Chart

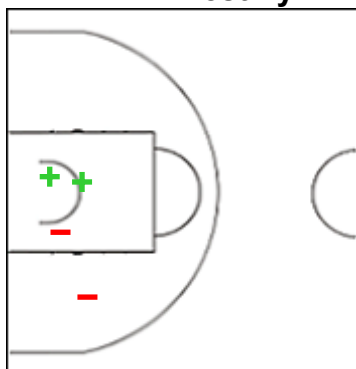
PAN 74 vs 80 DOM
(15-20, 19-13, 20-19, 20-28)

Scoring by 5 min intervals:

	Q1		Q2		Q3		Q4	
PAN	8	15	26	34	45	54	61	74
DOM	6	20	27	33	41	52	68	80

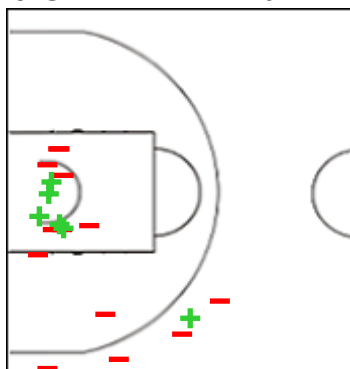
PAN - Panama

1 CHAVEZ Destiny



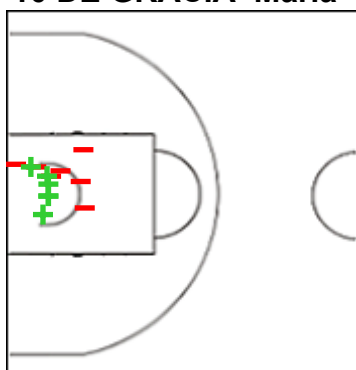
	M / A	%
Fied Goals	2 / 4	50
2 Points	2 / 4	50
3 Points	0 / 0	0
Free Throws	0 / 0	0

9 GRENALD Vivian



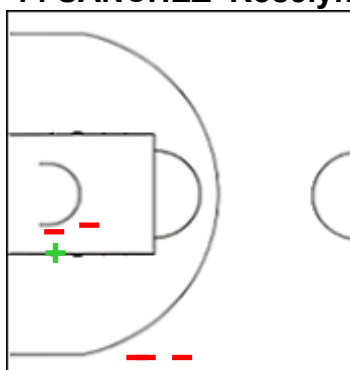
	M / A	%
Fied Goals	6 / 19	32
2 Points	5 / 14	36
3 Points	1 / 5	20
Free Throws	8 / 12	67

10 DE GRACIA Maria



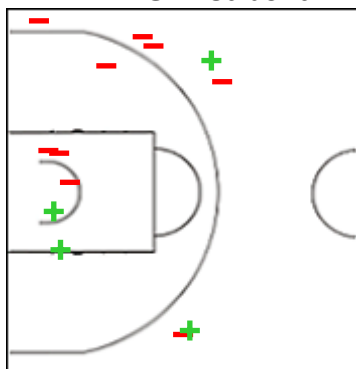
	M / A	%
Fied Goals	6 / 13	46
2 Points	6 / 13	46
3 Points	0 / 0	0
Free Throws	0 / 6	0

14 SANCHEZ Roselyn



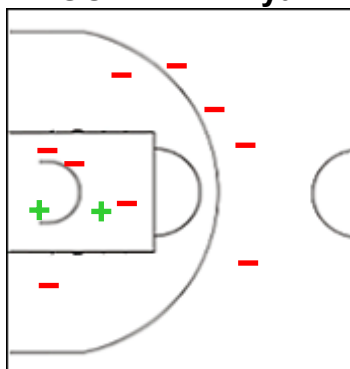
	M / A	%
Fied Goals	1 / 6	17
2 Points	1 / 3	33
3 Points	0 / 3	0
Free Throws	0 / 0	0

17 AVERSA Isabella



	M / A	%
Fied Goals	4 / 13	31
2 Points	2 / 6	33
3 Points	2 / 7	29
Free Throws	0 / 0	0

22 GONZALEZ Lya



	M / A	%
Fied Goals	2 / 11	18
2 Points	2 / 7	29
3 Points	0 / 4	0
Free Throws	4 / 4	100

Shot Chart

PAN 74 vs 80 DOM

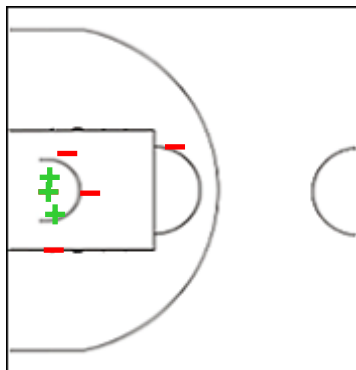
(15-20, 19-13, 20-19, 20-28)

Scoring by 5 min intervals:

	Q1		Q2		Q3		Q4	
PAN	8	15	26	34	45	54	61	74
DOM	6	20	27	33	41	52	68	80

PAN - Panama

32 GRANT Isabela



	M / A	%
Fied Goals	3 / 8	38
2 Points	3 / 8	38
3 Points	0 / 0	0
Free Throws	11 / 14	79

Shot Chart

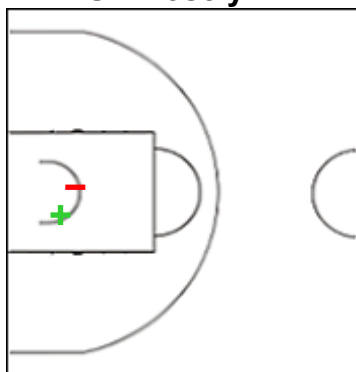
PAN 74 vs 80 DOM
(15-20, 19-13, 20-19, 20-28)

Scoring by 5 min intervals:

	Q1		Q2		Q3		Q4	
PAN	8	15	26	34	45	54	61	74
DOM	6	20	27	33	41	52	68	80

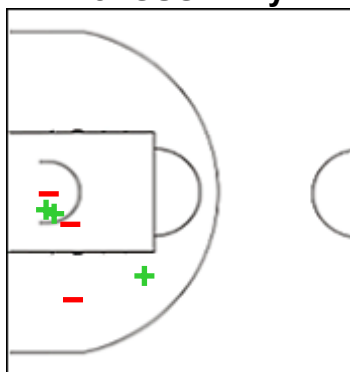
DOM - Dominican Republic

1 MESA Roselyn



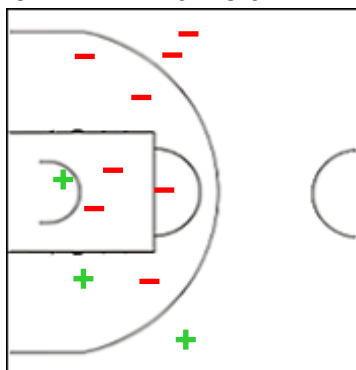
	M / A	%
Fied Goals	1 / 2	50
2 Points	1 / 2	50
3 Points	0 / 0	0
Free Throws	0 / 0	0

2 DE JESUS Anny



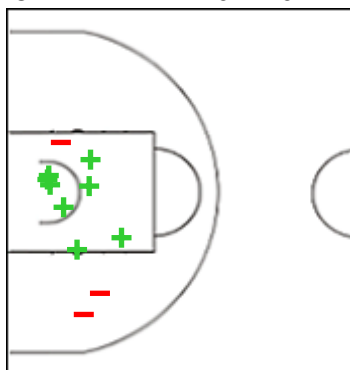
	M / A	%
Fied Goals	3 / 6	50
2 Points	3 / 6	50
3 Points	0 / 0	0
Free Throws	0 / 0	0

3 PÉREZ Pamela



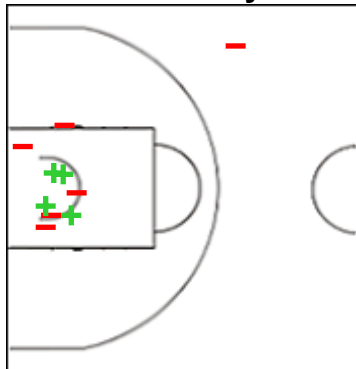
	M / A	%
Fied Goals	3 / 11	27
2 Points	2 / 8	25
3 Points	1 / 3	33
Free Throws	3 / 4	75

5 RAMIREZ Camila



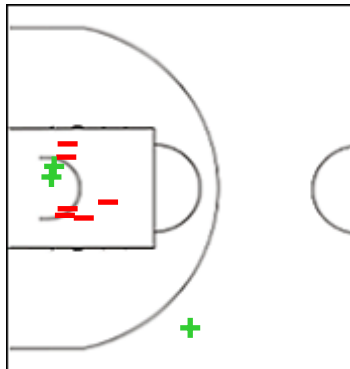
	M / A	%
Fied Goals	8 / 11	73
2 Points	8 / 11	73
3 Points	0 / 0	0
Free Throws	1 / 2	50

6 NUÑEZ Ashley



	M / A	%
Fied Goals	4 / 10	40
2 Points	4 / 9	44
3 Points	0 / 1	0
Free Throws	1 / 2	50

10 VALENZUELA Perla



	M / A	%
Fied Goals	3 / 9	33
2 Points	2 / 8	25
3 Points	1 / 1	100
Free Throws	2 / 7	29

Shot Chart

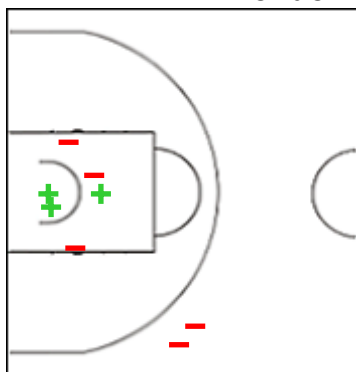
PAN 74 vs 80 DOM
(15-20, 19-13, 20-19, 20-28)

Scoring by 5 min intervals:

	Q1		Q2		Q3		Q4	
PAN	8	15	26	34	45	54	61	74
DOM	6	20	27	33	41	52	68	80

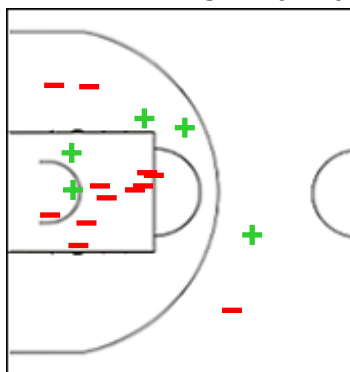
DOM - Dominican Republic

11 MARTINEZ Yenderli



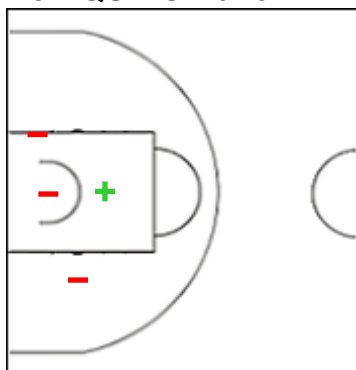
	M / A	%
Fied Goals	3 / 8	38
2 Points	3 / 6	50
3 Points	0 / 2	0
Free Throws	3 / 7	43

12 MERCADO Arianna



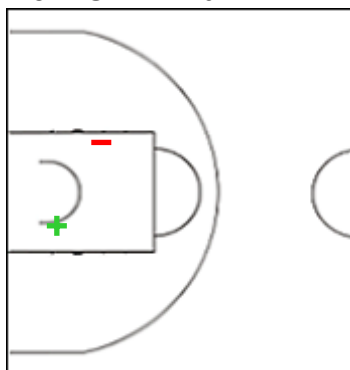
	M / A	%
Fied Goals	5 / 17	29
2 Points	4 / 15	27
3 Points	1 / 2	50
Free Throws	3 / 3	100

13 AQUINO Karla



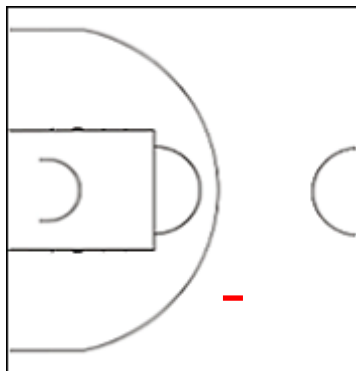
	M / A	%
Fied Goals	1 / 4	25
2 Points	1 / 4	25
3 Points	0 / 0	0
Free Throws	0 / 0	0

15 MOTA Ana



	M / A	%
Fied Goals	1 / 2	50
2 Points	1 / 2	50
3 Points	0 / 0	0
Free Throws	0 / 0	0

23 FREIRE Alanisse



	M / A	%
Fied Goals	0 / 1	0
2 Points	0 / 0	0
3 Points	0 / 1	0
Free Throws	0 / 0	0

Shot Chart

PAN 74 vs 80 DOM

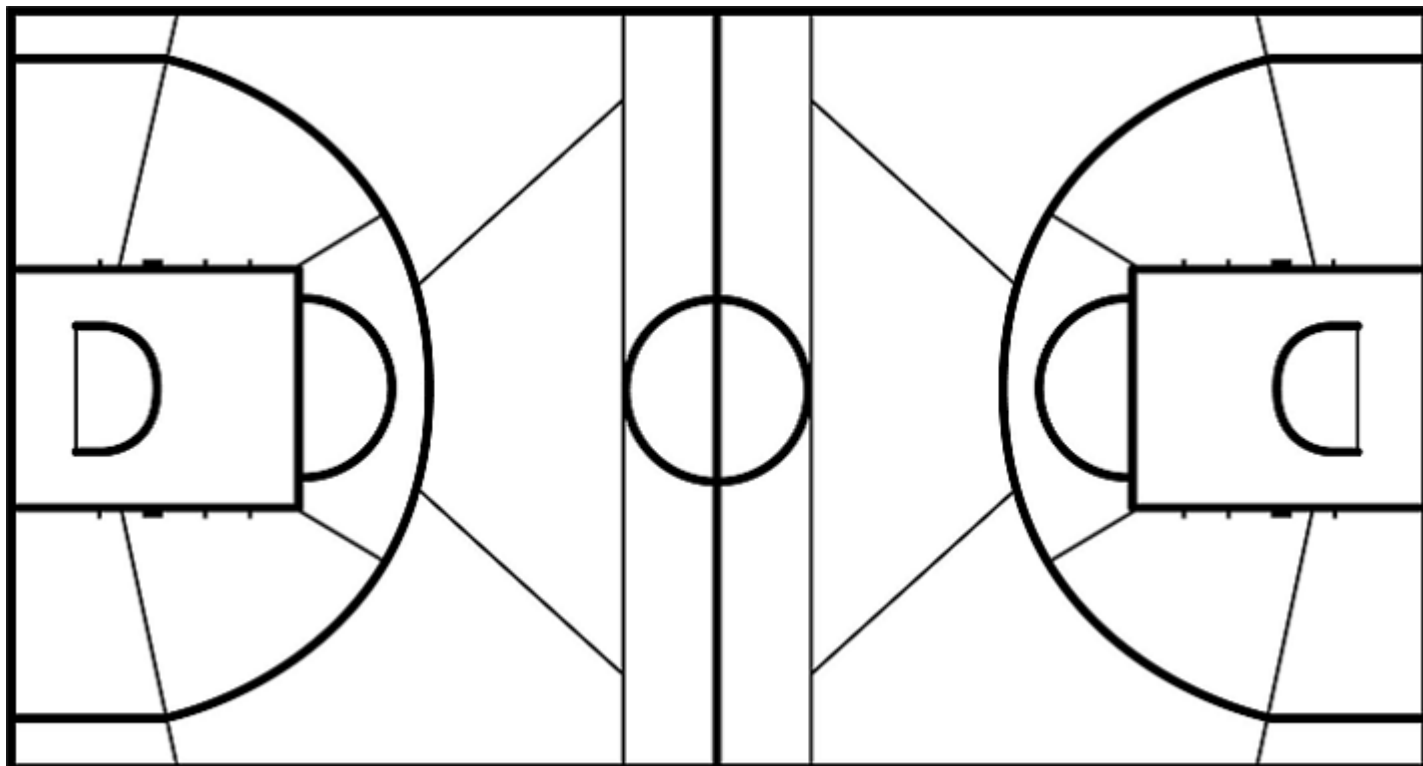
(15-20, 19-13, 20-19, 20-28)

Scoring by 5 min intervals:

	Q1		Q2		Q3		Q4	
PAN	8	15	26	34	45	54	61	74
DOM	6	20	27	33	41	52	68	80

PAN - Panama

DOM - Dominican Republic



	M / A	%
Fied Goals	24 / 74	32
2 Points	21 / 55	38
3 Points	3 / 19	16
Free Throws	23 / 36	64

%	M / A	
40	32 / 81	Fied Goals
41	29 / 71	2 Points
30	3 / 10	3 Points
52	13 / 25	Free Throws