

Shot Chart

AVEN 61 vs 72 SCH

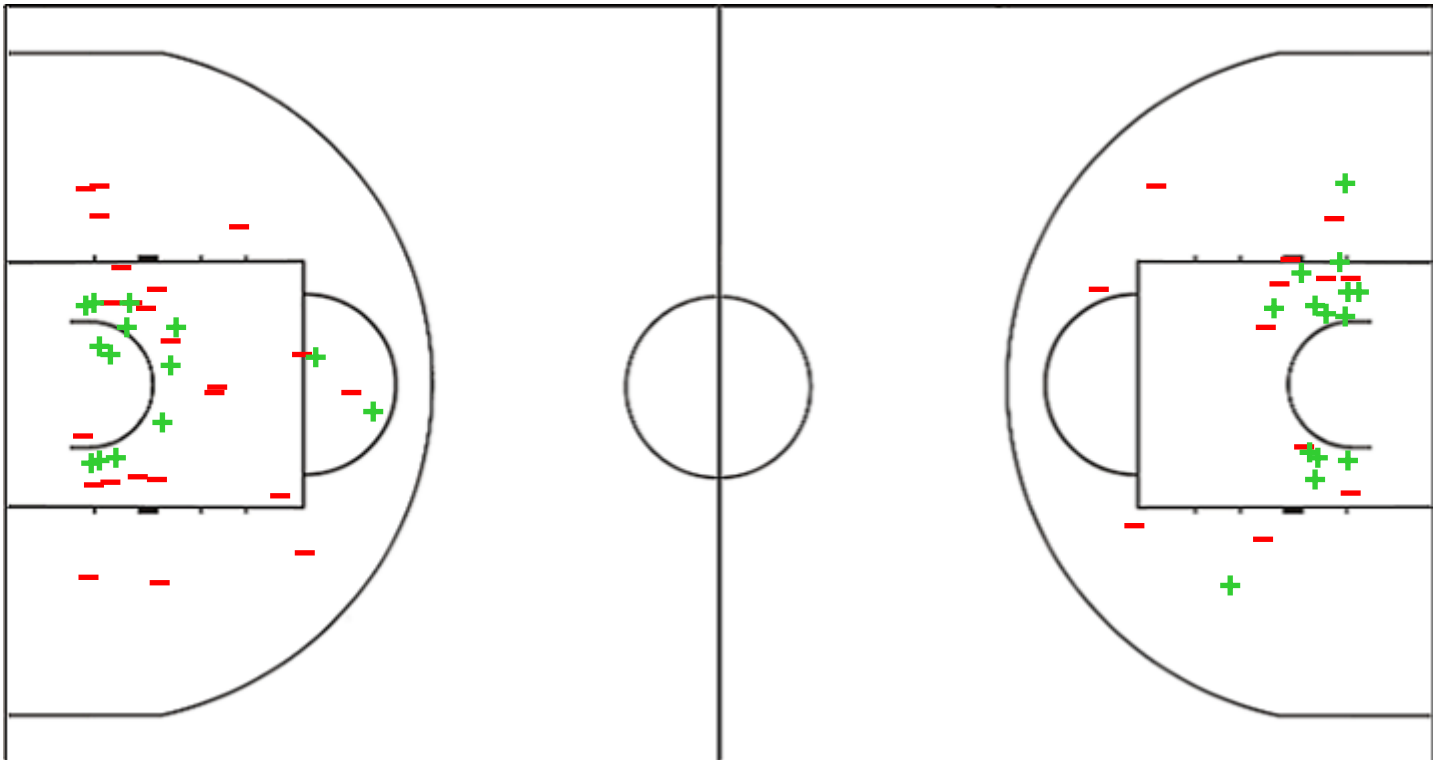
(14-18, 14-25, 15-12, 18-17)

Scoring by 5 min intervals:

| | Q1 | | Q2 | | Q3 | | Q4 | |
|-------------|----|----|----|----|----|----|----|----|
| AVEN | 6 | 14 | 21 | 28 | 33 | 43 | 51 | 61 |
| SCH | 7 | 18 | 32 | 43 | 51 | 55 | 63 | 72 |

AVEN - Club Baloncesto Avenida

SCH - Beretta Famila Schio



| AVEN | M / A | % |
|-------------|---------|----|
| Fied Goals | 20 / 62 | 32 |
| 2 Points | 14 / 37 | 38 |
| 3 Points | 6 / 25 | 24 |
| Free Throws | 15 / 17 | 88 |

| % | M / A | SCH |
|----|---------|-------------|
| 51 | 25 / 49 | Fied Goals |
| 54 | 14 / 26 | 2 Points |
| 48 | 11 / 23 | 3 Points |
| 61 | 11 / 18 | Free Throws |

Shot Chart

AVEN 61 vs 72 SCH

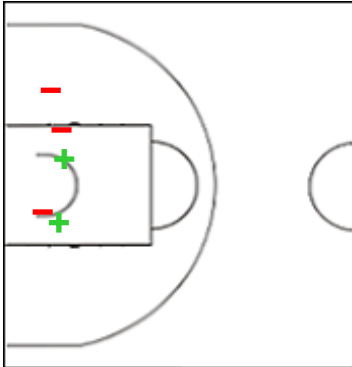
(14-18, 14-25, 15-12, 18-17)

Scoring by 5 min intervals:

| | Q1 | | Q2 | | Q3 | | Q4 | |
|-------------|----|----|----|----|----|----|----|----|
| AVEN | 6 | 14 | 21 | 28 | 33 | 43 | 51 | 61 |
| SCH | 7 | 18 | 32 | 43 | 51 | 55 | 63 | 72 |

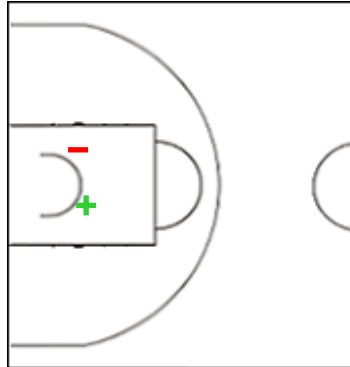
AVEN - Club Baloncesto Avenida

4 RODRIGUEZ Leonor



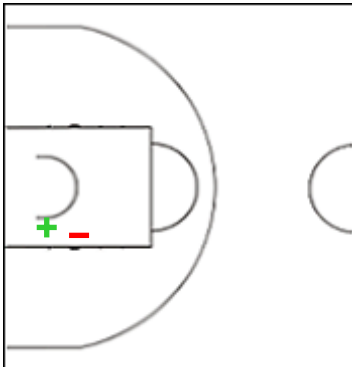
| | M / A | % |
|-------------|-------|----|
| Fied Goals | 2 / 6 | 33 |
| 2 Points | 2 / 5 | 40 |
| 3 Points | 0 / 1 | 0 |
| Free Throws | 3 / 4 | 75 |

5 CAZORLA Maite



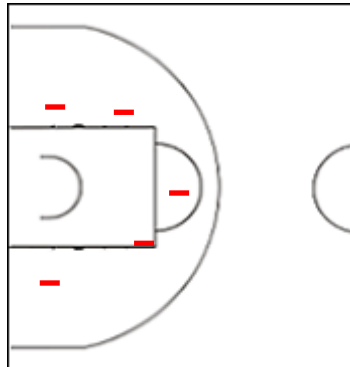
| | M / A | % |
|-------------|-------|-----|
| Fied Goals | 2 / 4 | 50 |
| 2 Points | 1 / 2 | 50 |
| 3 Points | 1 / 2 | 50 |
| Free Throws | 2 / 2 | 100 |

6 DOMINGUEZ Silvia



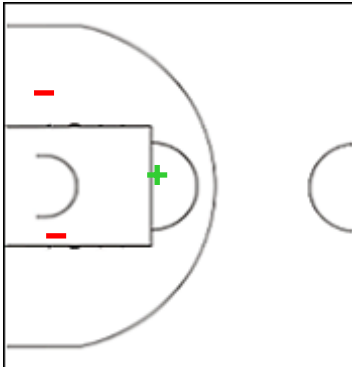
| | M / A | % |
|-------------|-------|----|
| Fied Goals | 1 / 5 | 20 |
| 2 Points | 1 / 2 | 50 |
| 3 Points | 0 / 3 | 0 |
| Free Throws | 0 / 0 | 0 |

11 CRVENDAKIC Aleksandra



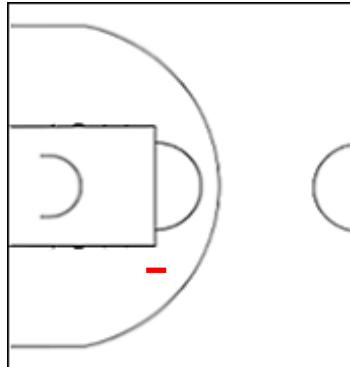
| | M / A | % |
|-------------|-------|---|
| Fied Goals | 0 / 7 | 0 |
| 2 Points | 0 / 5 | 0 |
| 3 Points | 0 / 2 | 0 |
| Free Throws | 0 / 0 | 0 |

12 ONYENWERE Michaela Nne



| | M / A | % |
|-------------|-------|----|
| Fied Goals | 2 / 7 | 29 |
| 2 Points | 1 / 3 | 33 |
| 3 Points | 1 / 4 | 25 |
| Free Throws | 0 / 0 | 0 |

13 VILARO Andrea



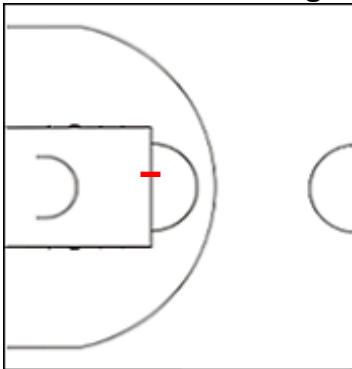
| | M / A | % |
|-------------|-------|----|
| Fied Goals | 2 / 5 | 40 |
| 2 Points | 0 / 1 | 0 |
| 3 Points | 2 / 4 | 50 |
| Free Throws | 0 / 0 | 0 |

Shot Chart
AVEN 61 vs 72 SCH

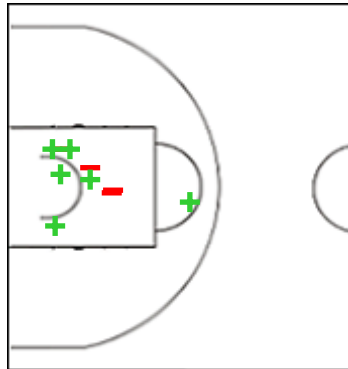
(14-18, 14-25, 15-12, 18-17)

Scoring by 5 min intervals:

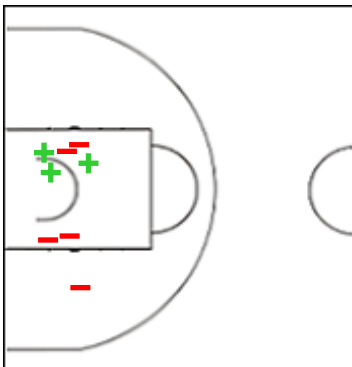
| | Q1 | | Q2 | | Q3 | | Q4 | |
|-------------|----|----|----|----|----|----|----|----|
| AVEN | 6 | 14 | 21 | 28 | 33 | 43 | 51 | 61 |
| SCH | 7 | 18 | 32 | 43 | 51 | 55 | 63 | 72 |

AVEN - Club Baloncesto Avenida
21 CARLETON Bridget


| | M / A | % |
|--------------------|-------|-----|
| Fied Goals | 2 / 9 | 22 |
| 2 Points | 0 / 1 | 0 |
| 3 Points | 2 / 8 | 25 |
| Free Throws | 2 / 2 | 100 |

34 FASOULA Mariella


| | M / A | % |
|--------------------|--------|----|
| Fied Goals | 6 / 10 | 60 |
| 2 Points | 6 / 10 | 60 |
| 3 Points | 0 / 0 | 0 |
| Free Throws | 4 / 5 | 80 |

44 REISINGEROVA Julia


| | M / A | % |
|--------------------|-------|-----|
| Fied Goals | 3 / 9 | 33 |
| 2 Points | 3 / 8 | 38 |
| 3 Points | 0 / 1 | 0 |
| Free Throws | 4 / 4 | 100 |

Shot Chart

AVEN 61 vs 72 SCH

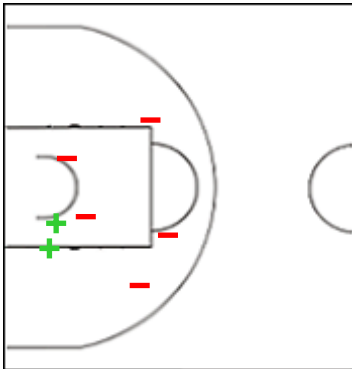
(14-18, 14-25, 15-12, 18-17)

Scoring by 5 min intervals:

| | Q1 | | Q2 | | Q3 | | Q4 | |
|-------------|----|----|----|----|----|----|----|----|
| AVEN | 6 | 14 | 21 | 28 | 33 | 43 | 51 | 61 |
| SCH | 7 | 18 | 32 | 43 | 51 | 55 | 63 | 72 |

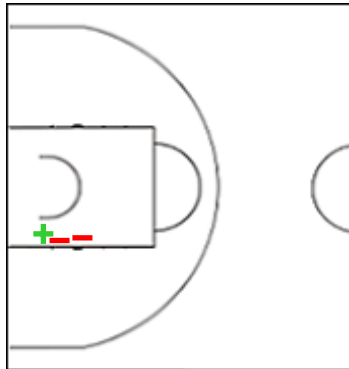
SCH - Beretta Famila Schio

3 MABREY Marina



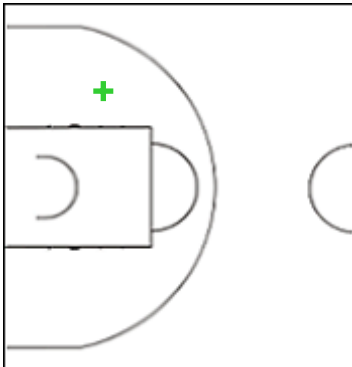
| | M / A | % |
|-------------|--------|----|
| Fied Goals | 4 / 11 | 36 |
| 2 Points | 2 / 7 | 29 |
| 3 Points | 2 / 4 | 50 |
| Free Throws | 0 / 0 | 0 |

5 MESTDAGH Kim



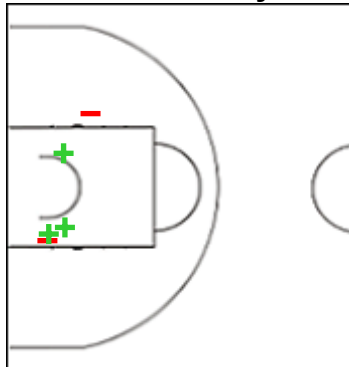
| | M / A | % |
|-------------|-------|----|
| Fied Goals | 1 / 4 | 25 |
| 2 Points | 1 / 3 | 33 |
| 3 Points | 0 / 1 | 0 |
| Free Throws | 0 / 0 | 0 |

8 VERONA Costanza



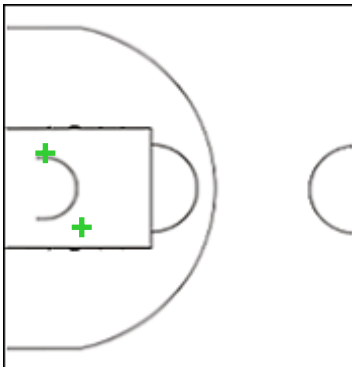
| | M / A | % |
|-------------|-------|-----|
| Fied Goals | 2 / 3 | 67 |
| 2 Points | 1 / 1 | 100 |
| 3 Points | 1 / 2 | 50 |
| Free Throws | 0 / 0 | 0 |

10 HOWARD Rhyne



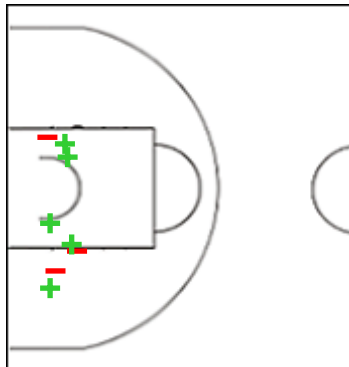
| | M / A | % |
|-------------|--------|----|
| Fied Goals | 6 / 12 | 50 |
| 2 Points | 3 / 5 | 60 |
| 3 Points | 3 / 7 | 43 |
| Free Throws | 1 / 2 | 50 |

31 KEYS Jasmine



| | M / A | % |
|-------------|-------|-----|
| Fied Goals | 4 / 5 | 80 |
| 2 Points | 2 / 2 | 100 |
| 3 Points | 2 / 3 | 67 |
| Free Throws | 4 / 6 | 67 |

42 ZAHUI Amanda



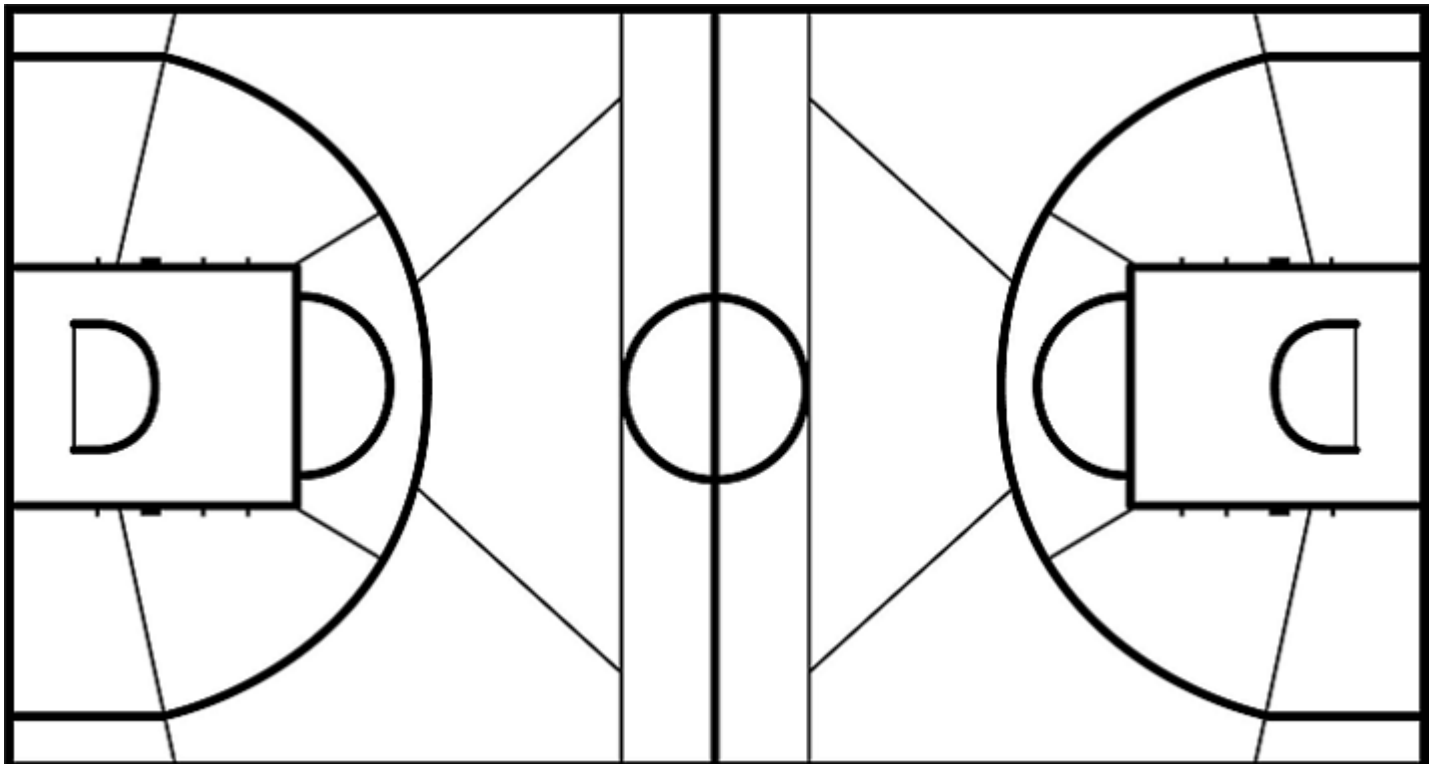
| | M / A | % |
|-------------|--------|----|
| Fied Goals | 6 / 10 | 60 |
| 2 Points | 5 / 8 | 63 |
| 3 Points | 1 / 2 | 50 |
| Free Throws | 3 / 4 | 75 |

Shot Chart
AVEN 61 vs 72 SCH

(14-18, 14-25, 15-12, 18-17)

Scoring by 5 min intervals:

| | Q1 | | Q2 | | Q3 | | Q4 | |
|-------------|----|----|----|----|----|----|----|----|
| AVEN | 6 | 14 | 21 | 28 | 33 | 43 | 51 | 61 |
| SCH | 7 | 18 | 32 | 43 | 51 | 55 | 63 | 72 |

AVEN - Club Baloncesto Avenida
SCH - Beretta Famila Schio


| | M / A | % |
|--------------------|---------|----|
| Fied Goals | 20 / 62 | 32 |
| 2 Points | 14 / 37 | 38 |
| 3 Points | 6 / 25 | 24 |
| Free Throws | 15 / 17 | 88 |

| % | M / A | |
|----|---------|--------------------|
| 51 | 25 / 49 | Fied Goals |
| 54 | 14 / 26 | 2 Points |
| 48 | 11 / 23 | 3 Points |
| 61 | 11 / 18 | Free Throws |