



Shot Chart

TPE 71 vs 76 JPN

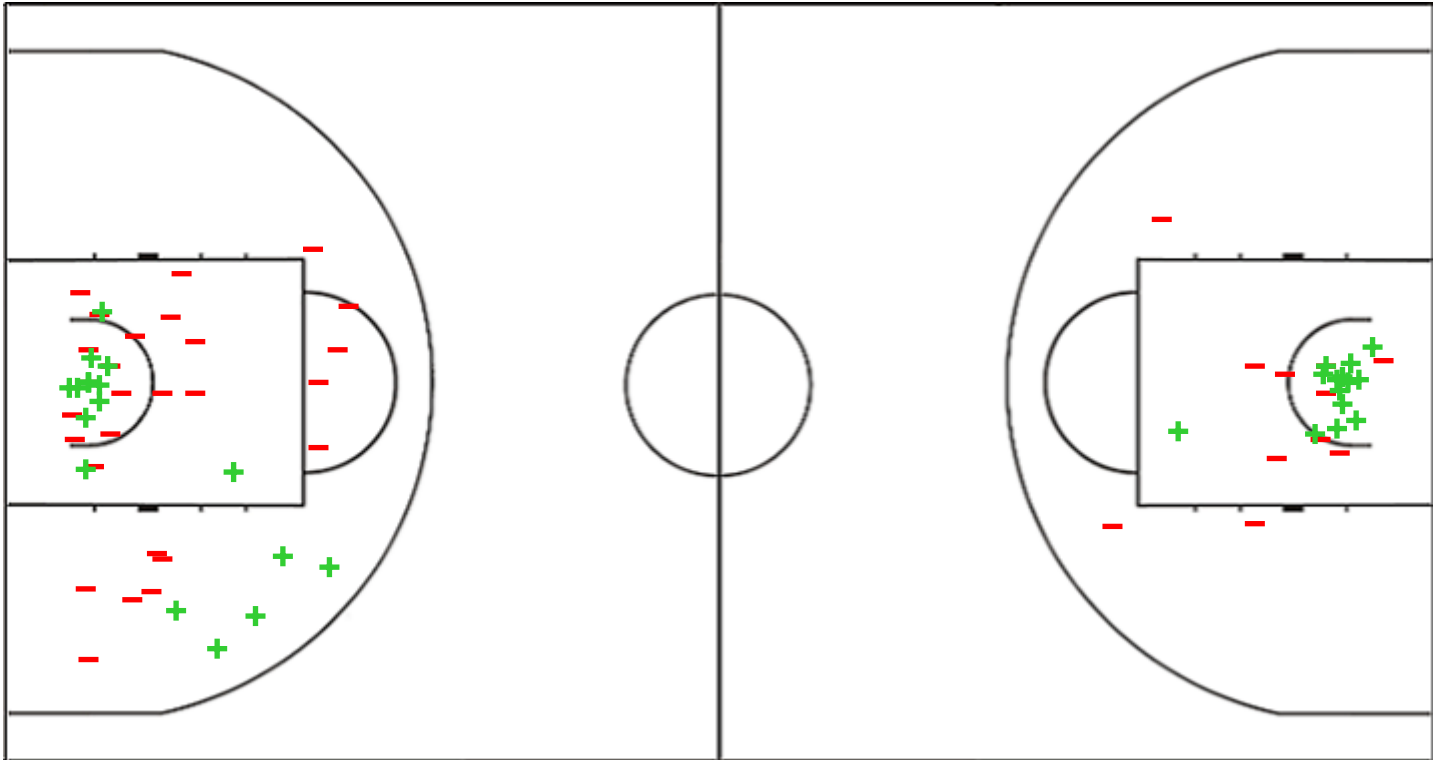
(21-15, 18-18, 14-16, 18-27)

Scoring by 5 min intervals:

	Q1		Q2		Q3		Q4	
TPE	11	21	29	39	47	53	62	71
JPN	5	15	27	33	41	49	67	76

TPE - Chinese Taipei

JPN - Japan



TPE	M / A	%
Fied Goals	26 / 73	36
2 Points	18 / 45	40
3 Points	8 / 28	29
Free Throws	11 / 19	58

%	M / A	JPN
42	25 / 59	Fied Goals
56	14 / 25	2 Points
32	11 / 34	3 Points
71	15 / 21	Free Throws

GLOBAL PARTNERS





Shot Chart

TPE 71 vs 76 JPN

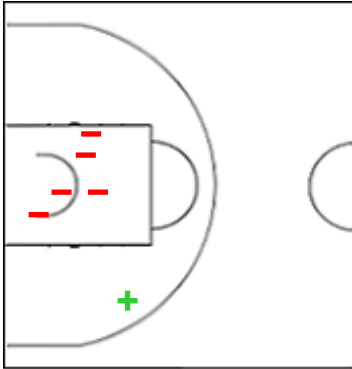
(21-15, 18-18, 14-16, 18-27)

Scoring by 5 min intervals:

	Q1		Q2		Q3		Q4	
TPE	11	21	29	39	47	53	62	71
JPN	5	15	27	33	41	49	67	76

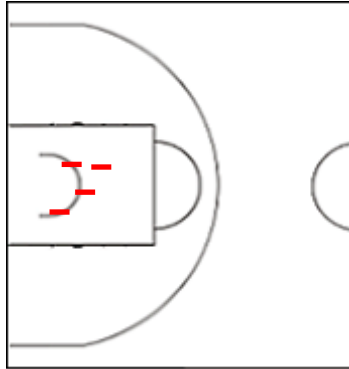
TPE - Chinese Taipei

3 LIN Bing Sheng



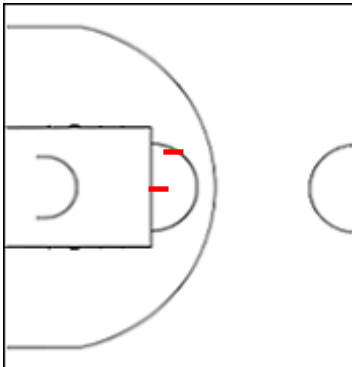
	M / A	%
Fied Goals	3 / 14	21
2 Points	1 / 6	17
3 Points	2 / 8	25
Free Throws	1 / 4	25

5 PAI Yao Cheng



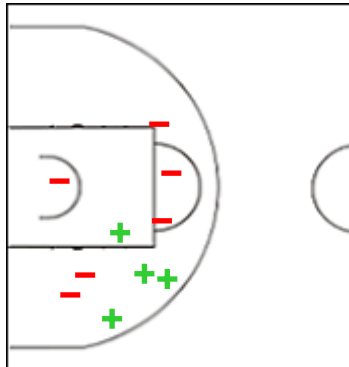
	M / A	%
Fied Goals	0 / 5	0
2 Points	0 / 4	0
3 Points	0 / 1	0
Free Throws	5 / 6	83

7 WEI Chia Hao



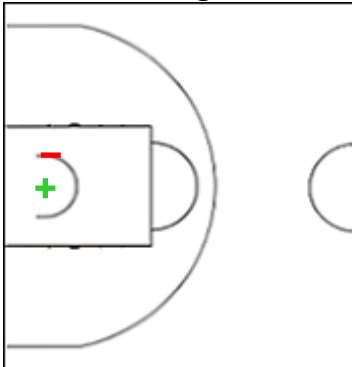
	M / A	%
Fied Goals	2 / 5	40
2 Points	0 / 2	0
3 Points	2 / 3	67
Free Throws	2 / 2	100

12 CHOU Kuei-Yu



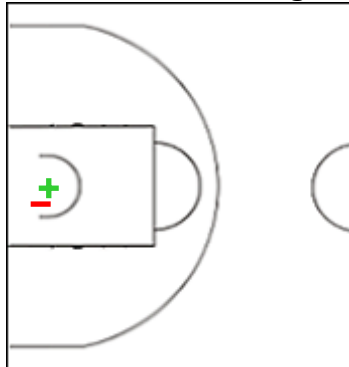
	M / A	%
Fied Goals	8 / 17	47
2 Points	4 / 10	40
3 Points	4 / 7	57
Free Throws	1 / 2	50

25 LIN Cheng



	M / A	%
Fied Goals	1 / 2	50
2 Points	1 / 2	50
3 Points	0 / 0	0
Free Throws	1 / 2	50

27 CHOU Yi-Hsiang



	M / A	%
Fied Goals	1 / 7	14
2 Points	1 / 2	50
3 Points	0 / 5	0
Free Throws	0 / 0	0

GLOBAL PARTNERS





Shot Chart

TPE 71 vs 76 JPN

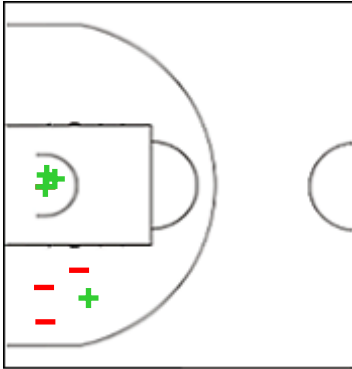
(21-15, 18-18, 14-16, 18-27)

Scoring by 5 min intervals:

	Q1		Q2		Q3		Q4	
TPE	11	21	29	39	47	53	62	71
JPN	5	15	27	33	41	49	67	76

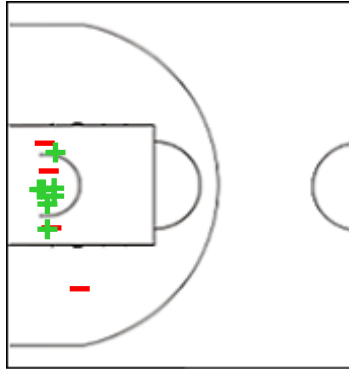
TPE - Chinese Taipei

29 HAN Chieh-Yu



	M / A	%
Fied Goals	4 / 9	44
2 Points	4 / 8	50
3 Points	0 / 1	0
Free Throws	0 / 0	0

31 ARTINO William



	M / A	%
Fied Goals	7 / 13	54
2 Points	7 / 11	64
3 Points	0 / 2	0
Free Throws	1 / 3	33

GLOBAL PARTNERS





Shot Chart

TPE 71 vs 76 JPN

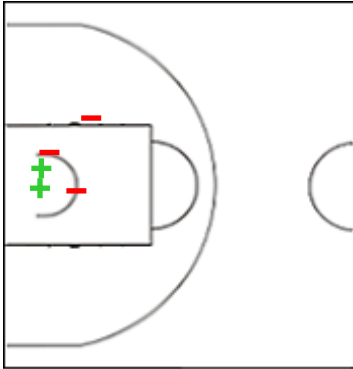
(21-15, 18-18, 14-16, 18-27)

Scoring by 5 min intervals:

	Q1		Q2		Q3		Q4	
TPE	11	21	29	39	47	53	62	71
JPN	5	15	27	33	41	49	67	76

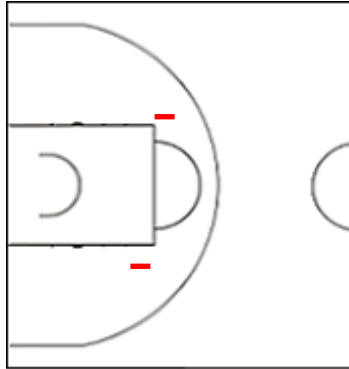
JPN - Japan

1 SAITO Takumi



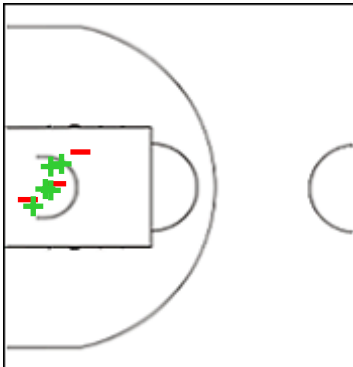
	M / A	%
Fied Goals	2 / 6	33
2 Points	2 / 5	40
3 Points	0 / 1	0
Free Throws	0 / 0	0

2 TOGASHI Yuki



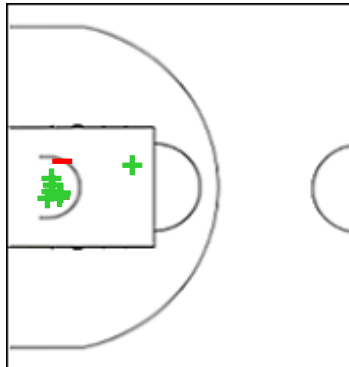
	M / A	%
Fied Goals	2 / 8	25
2 Points	0 / 2	0
3 Points	2 / 6	33
Free Throws	2 / 2	100

3 EVANS Luke



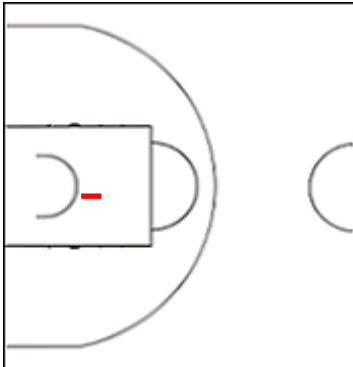
	M / A	%
Fied Goals	6 / 11	55
2 Points	5 / 8	63
3 Points	1 / 3	33
Free Throws	4 / 8	50

19 NISHIDA Yudai



	M / A	%
Fied Goals	9 / 13	69
2 Points	7 / 9	78
3 Points	2 / 4	50
Free Throws	7 / 7	100

32 SCHAFER Avi Koki



	M / A	%
Fied Goals	0 / 1	0
2 Points	0 / 1	0
3 Points	0 / 0	0
Free Throws	0 / 0	0

GLOBAL PARTNERS





Shot Chart

TPE 71 vs 76 JPN

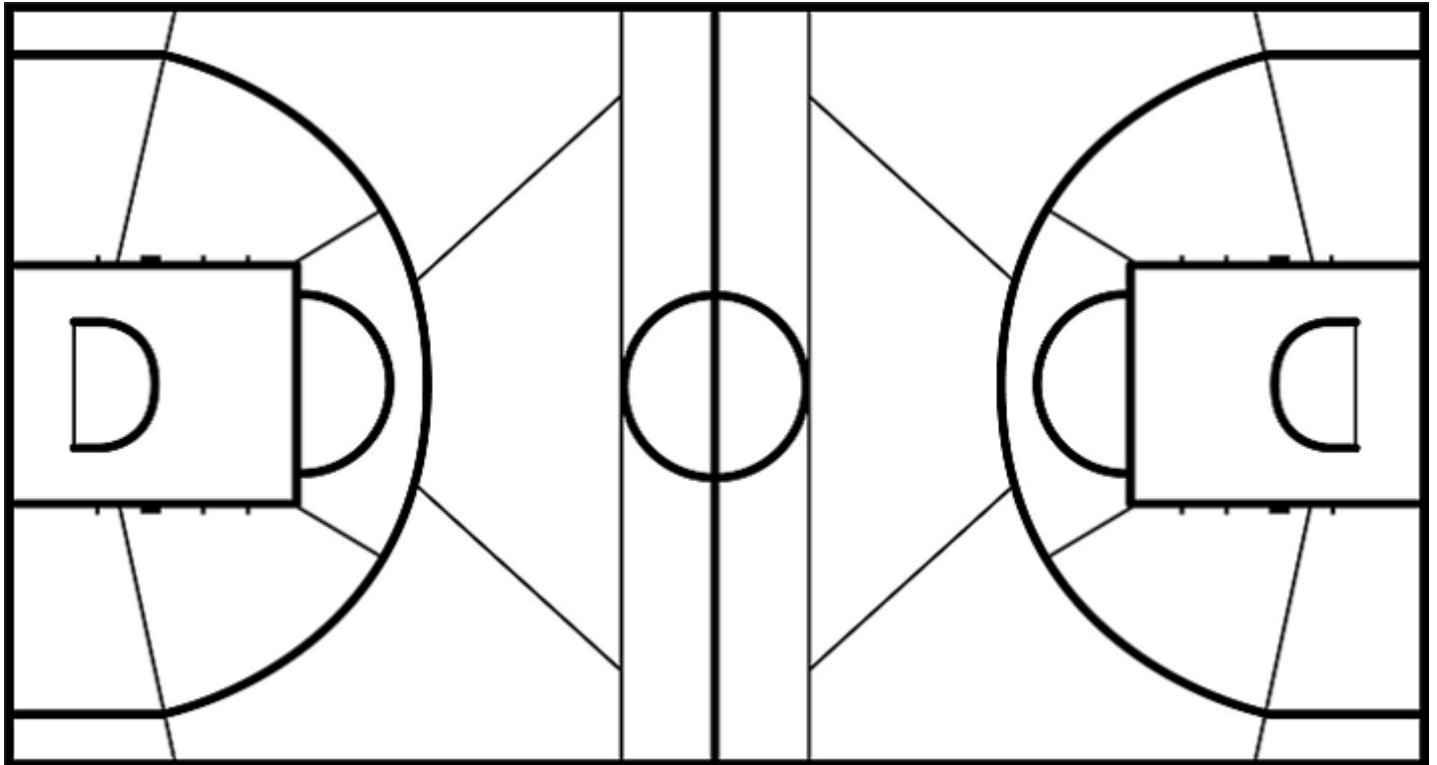
(21-15, 18-18, 14-16, 18-27)

Scoring by 5 min intervals:

	Q1		Q2		Q3		Q4	
TPE	11	21	29	39	47	53	62	71
JPN	5	15	27	33	41	49	67	76

TPE - Chinese Taipei

JPN - Japan



	M / A	%
Fied Goals	26 / 73	36
2 Points	18 / 45	40
3 Points	8 / 28	29
Free Throws	11 / 19	58

%	M / A	
42	25 / 59	Fied Goals
56	14 / 25	2 Points
32	11 / 34	3 Points
71	15 / 21	Free Throws

GLOBAL PARTNERS

