



Shot Chart

JPN 89 vs 49 TPE

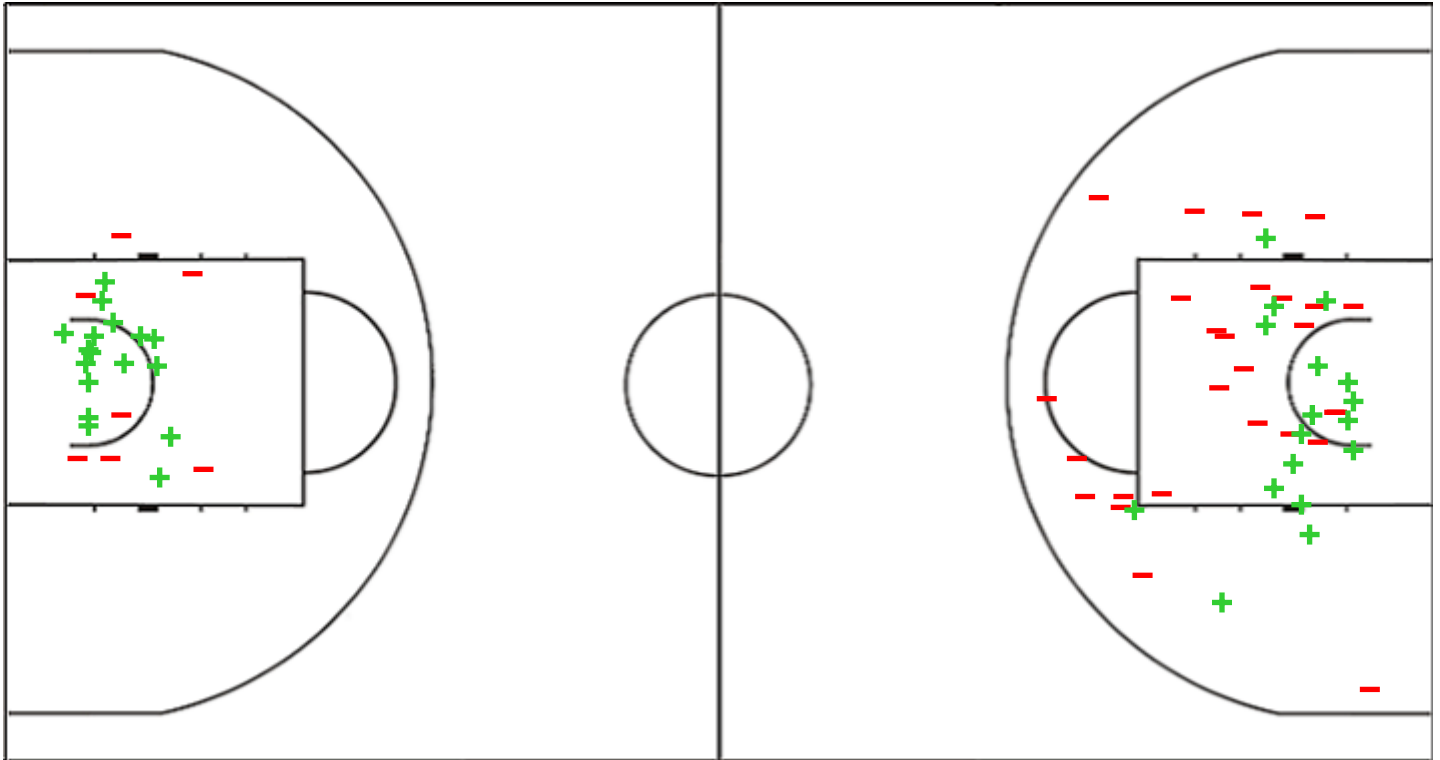
(25-14, 17-13, 18-9, 29-13)

Scoring by 5 min intervals:

	Q1		Q2		Q3		Q4	
JPN	10	25	34	42	52	60	73	89
TPE	11	14	18	27	34	36	43	49

JPN - Japan

TPE - Chinese Taipei



JPN	M / A	%
Fied Goals	29 / 67	43
2 Points	17 / 24	71
3 Points	12 / 43	28
Free Throws	19 / 21	90

%	M / A	TPE
32	21 / 66	Fied Goals
39	17 / 44	2 Points
18	4 / 22	3 Points
50	3 / 6	Free Throws

GLOBAL PARTNERS





Shot Chart

JPN 89 vs 49 TPE

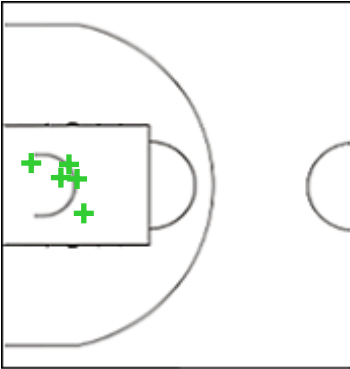
(25-14, 17-13, 18-9, 29-13)

Scoring by 5 min intervals:

	Q1		Q2		Q3		Q4	
JPN	10	25	34	42	52	60	73	89
TPE	11	14	18	27	34	36	43	49

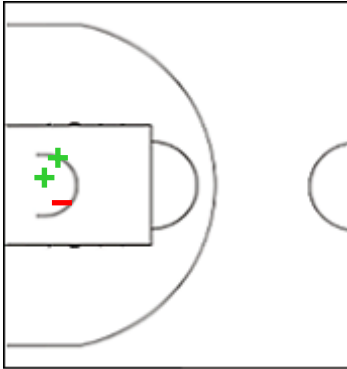
JPN - Japan

3 EVANS Luke



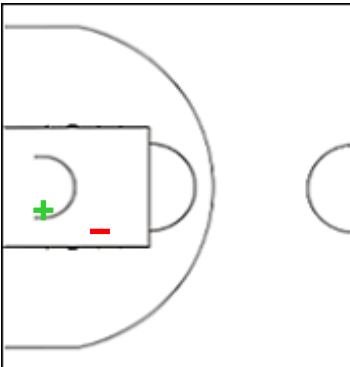
	M / A	%
Fied Goals	5 / 9	56
2 Points	5 / 5	100
3 Points	0 / 4	0
Free Throws	3 / 3	100

16 SATO Takuma



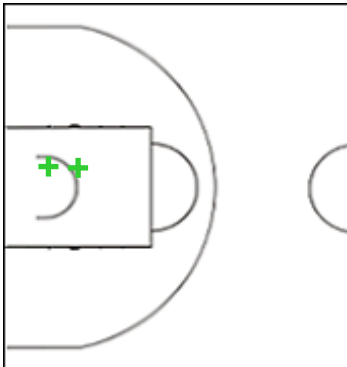
	M / A	%
Fied Goals	3 / 9	33
2 Points	2 / 3	67
3 Points	1 / 6	17
Free Throws	0 / 0	0

17 SUDA Yutaroh



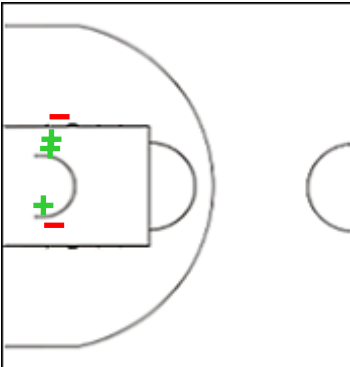
	M / A	%
Fied Goals	3 / 8	38
2 Points	1 / 2	50
3 Points	2 / 6	33
Free Throws	0 / 0	0

19 NISHIDA Yudai



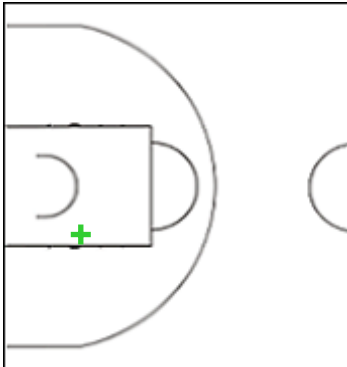
	M / A	%
Fied Goals	2 / 3	67
2 Points	2 / 2	100
3 Points	0 / 1	0
Free Throws	0 / 0	0

39 TOMINAGA Keisei



	M / A	%
Fied Goals	5 / 14	36
2 Points	3 / 5	60
3 Points	2 / 9	22
Free Throws	5 / 5	100

45 TOEWS Kai



	M / A	%
Fied Goals	1 / 3	33
2 Points	1 / 1	100
3 Points	0 / 2	0
Free Throws	0 / 1	0

GLOBAL PARTNERS





Shot Chart

JPN 89 vs 49 TPE

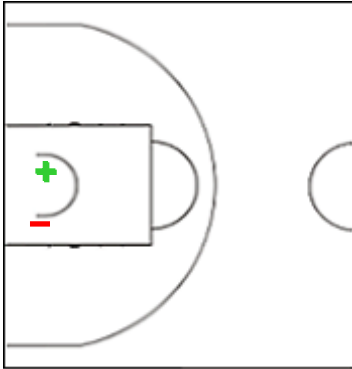
(25-14, 17-13, 18-9, 29-13)

Scoring by 5 min intervals:

	Q1		Q2		Q3		Q4	
JPN	10	25	34	42	52	60	73	89
TPE	11	14	18	27	34	36	43	49

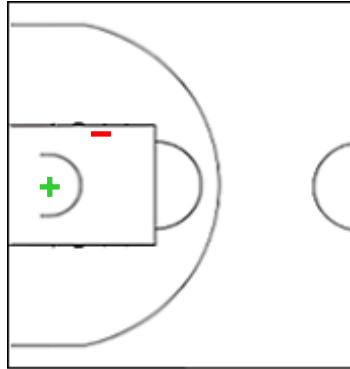
JPN - Japan

71 INOUE Soichiro



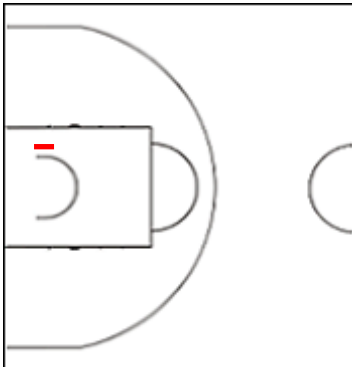
	M / A	%
Fied Goals	5 / 9	56
2 Points	2 / 3	67
3 Points	3 / 6	50
Free Throws	1 / 2	50

88 HARIMOTO Tenketsu



	M / A	%
Fied Goals	3 / 7	43
2 Points	1 / 2	50
3 Points	2 / 5	40
Free Throws	2 / 2	100

91 YOSHII Hirotaka



	M / A	%
Fied Goals	1 / 2	50
2 Points	0 / 1	0
3 Points	1 / 1	100
Free Throws	5 / 5	100

GLOBAL PARTNERS





Shot Chart

JPN 89 vs 49 TPE

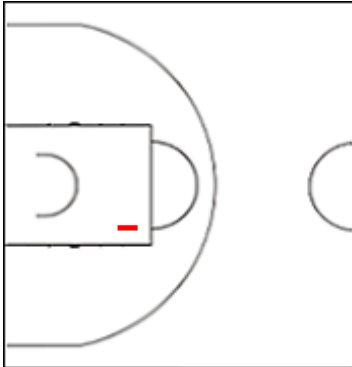
(25-14, 17-13, 18-9, 29-13)

Scoring by 5 min intervals:

	Q1		Q2		Q3		Q4	
JPN	10	25	34	42	52	60	73	89
TPE	11	14	18	27	34	36	43	49

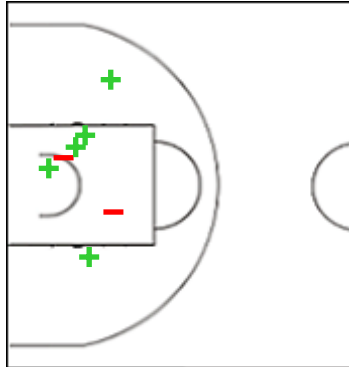
TPE - Chinese Taipei

1 LIN Yan Ting



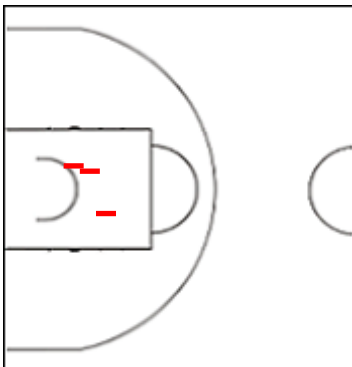
	M / A	%
Fied Goals	0 / 1	0
2 Points	0 / 1	0
3 Points	0 / 0	0
Free Throws	0 / 0	0

3 LIN Bing Sheng



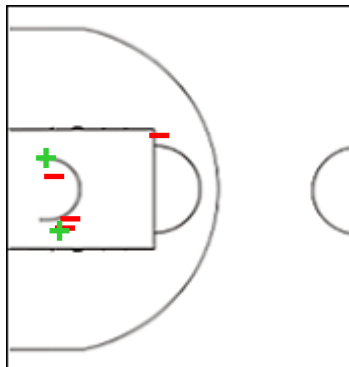
	M / A	%
Fied Goals	6 / 10	60
2 Points	5 / 7	71
3 Points	1 / 3	33
Free Throws	0 / 0	0

4 CHEN Yu-Wei



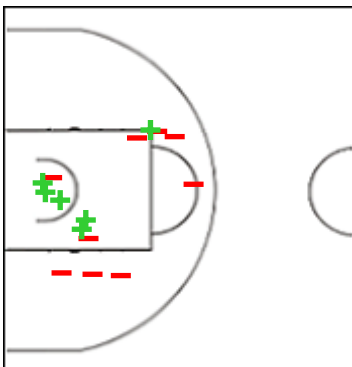
	M / A	%
Fied Goals	1 / 5	20
2 Points	0 / 3	0
3 Points	1 / 2	50
Free Throws	0 / 0	0

7 YU Ai-Che



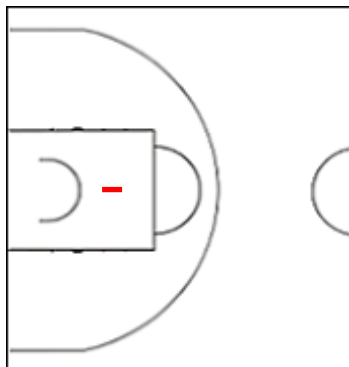
	M / A	%
Fied Goals	2 / 6	33
2 Points	2 / 6	33
3 Points	0 / 0	0
Free Throws	0 / 0	0

9 TANG Wei-Chieh



	M / A	%
Fied Goals	6 / 15	40
2 Points	6 / 15	40
3 Points	0 / 0	0
Free Throws	3 / 4	75

15 CHANG Chen-Ya



	M / A	%
Fied Goals	0 / 5	0
2 Points	0 / 1	0
3 Points	0 / 4	0
Free Throws	0 / 0	0

GLOBAL PARTNERS





Shot Chart

JPN 89 vs 49 TPE

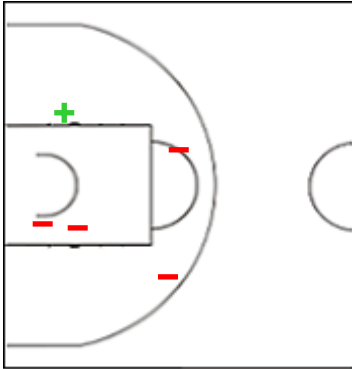
(25-14, 17-13, 18-9, 29-13)

Scoring by 5 min intervals:

	Q1		Q2		Q3		Q4	
JPN	10	25	34	42	52	60	73	89
TPE	11	14	18	27	34	36	43	49

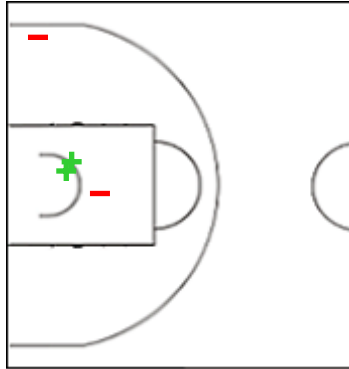
TPE - Chinese Taipei

20 SUN Szu-Yao



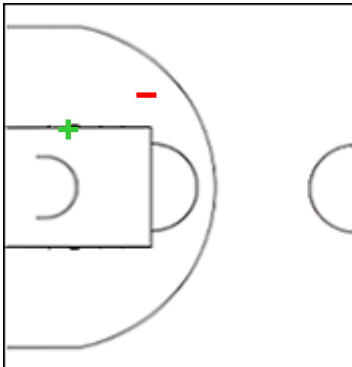
	M / A	%
Fied Goals	1 / 5	20
2 Points	1 / 5	20
3 Points	0 / 0	0
Free Throws	0 / 2	0

69 LU Chun Hsiang



	M / A	%
Fied Goals	3 / 13	23
2 Points	2 / 4	50
3 Points	1 / 9	11
Free Throws	0 / 0	0

89 CHEN Chao Hao



	M / A	%
Fied Goals	1 / 2	50
2 Points	1 / 2	50
3 Points	0 / 0	0
Free Throws	0 / 0	0

GLOBAL PARTNERS





Shot Chart

JPN 89 vs 49 TPE

(25-14, 17-13, 18-9, 29-13)

Scoring by 5 min intervals:

	Q1		Q2		Q3		Q4	
JPN	10	25	34	42	52	60	73	89
TPE	11	14	18	27	34	36	43	49

JPN - Japan

TPE - Chinese Taipei



	M / A	%
Fied Goals	29 / 67	43
2 Points	17 / 24	71
3 Points	12 / 43	28
Free Throws	19 / 21	90

%	M / A	
32	21 / 66	Fied Goals
39	17 / 44	2 Points
18	4 / 22	3 Points
50	3 / 6	Free Throws

GLOBAL PARTNERS

