

Cumulative Statistics

JPN - Japan

After 1 game

Player Totals

No.	Name	GP	Time Played	Field Goals		2 Points		3 Points		Free Throws		Rebounds			AS	TO	ST	BS	PF	FD	+/-	PTS		
				M / A	%	M / A	%	M / A	%	M / A	%	OR	DR	TOT										
2	TOGASHI Yuki (C)	1	19:40	0/5	0	0/3	0	0/2	0	0/2	0	2	2	3	3				2	1	-6			
5	KAWAMURA Yuki	1	18:12	2/12	17	0/3	0	2/9	22	1/2	50	2	2	3	4	1			1	1	-16	7		
6	HIEJIMA Makoto	1	8:35	1/3	33	1/1	100	0/2	0	0/1	0	2	2	2		1			1	1	-5	2		
12	WATANABE Yuta	1	30:39	9/19	47	7/9	78	2/10	20			6	6	2	2	1	2		3		-9	20		
18	BABA Yudai	1	29:06	7/10	70	6/7	86	1/3	33			4	4	2	2	1			2	1	-14	15		
19	NISHIDA Yudai	1	2:08	1/2	50	1/1	100	0/1	0						1						4	2		
24	HAWKINSON Joshua	1	24:56	1/5	20	1/2	50	0/3	0	7/8	88	4	6	10	1	1		1	4	4	0	9		
30	TOMINAGA Keisei	1	12:42	1/2	50			1/2	50	2/2	100				1				1	2	-3	5		
31	HARA Shuta	1	17:17	0/2	0			0/2	0			1		1							-6			
75	INOUE Soichiro	1	1:46																		3			
91	YOSHII Hirotaka	1	19:55	1/4	25	1/3	33	0/1	0	1/2	50		1	1	3		1		1	2	-20	3		
99	KAWAMATA Koya	1	15:04	0/1	0	0/1	0					1	1	2	1				1		-18			
Team / Coach												2	4	6				1						
Totals				23/65	35	17/30	57	6/35	17	11/17	65	8	28	36	17	13	5	3	16	12	-18	63		
Opponents				34/72	47	28/39	72	6/33	18	7/9	78	11	36	47	21	10	7	4	12	16	18	81		

Team Totals

	JPN	Opponents
Points from Turnovers	16	12
Points in the Paint	34 (17/27) 63%	52 (26/33) 79%
Second Chance Points	9	16
Fast Break Points	12	8
Bench Points	19	32

Player Averages

No.	Name	GP	MPG	Field Goals		2 Points		3 Points		Free Throws		Rebounds			AS	TO	ST	BS	PF	FD	+/-	PPG		
				M / A	%	M / A	%	M / A	%	M / A	%	OR	DR	TOT										
2	TOGASHI Yuki (C)	1	19:40	0.0/5.0	0	0.0/3.0	0	0.0/2.0	0	0.0/2.0	0	2.0	2.0	3.0	3.0				2.0	1.0	-6.0			
5	KAWAMURA Yuki	1	18:12	2.0/12.0	17	0.0/3.0	0	2.0/9.0	22	1.0/2.0	50	2.0	2.0	3.0	4.0	1.0			1.0	1.0	-16.0	7.0		
6	HIEJIMA Makoto	1	8:35	1.0/3.0	33	1.0/1.0	100	0.0/2.0	0	0.0/1.0	0	2.0	2.0	2.0		1.0			1.0	1.0	-5.0	2.0		
12	WATANABE Yuta	1	30:39	9.0/19.0	47	7.0/9.0	78	2.0/10.0	20			6.0	6.0	2.0		1.0	2.0		3.0		-9.0	20.0		
18	BABA Yudai	1	29:06	7.0/10.0	70	6.0/7.0	86	1.0/3.0	33			4.0	4.0	2.0	2.0	1.0			2.0	1.0	-14.0	15.0		
19	NISHIDA Yudai	1	2:08	1.0/2.0	50	1.0/1.0	100	0.0/1.0	0						1.0						4.0	2.0		
24	HAWKINSON Joshua	1	24:56	1.0/5.0	20	1.0/2.0	50	0.0/3.0	0	7.0/8.0	88	4.0	6.0	10.0	1.0	1.0		1.0	4.0	4.0	0.0	9.0		
30	TOMINAGA Keisei	1	12:42	1.0/2.0	50			1.0/2.0	50	2.0/2.0	100				1.0				1.0	2.0	-3.0	5.0		
31	HARA Shuta	1	17:17	0.0/2.0	0			0.0/2.0	0			1.0		1.0							-6.0			
75	INOUE Soichiro	1	1:46																		3.0			
91	YOSHII Hirotaka	1	19:55	1.0/4.0	25	1.0/3.0	33	0.0/1.0	0	1.0/2.0	50		1.0	1.0	3.0		1.0		1.0	2.0	-20.0	3.0		
99	KAWAMATA Koya	1	15:04	0.0/1.0	0	0.0/1.0	0					1.0	1.0	2.0	1.0				1.0		-18.0			
Team / Coach												2.0	4.0	6.0				1.0						
Totals				23.0/65.0	35	17.0/30.0	57	6.0/35.0	17	11.0/17.0	65	8.0	28.0	36.0	17.0	13.0	5.0	3.0	16.0	12.0	-18.0	63.0		
Opponents				34.0/72.0	47	28.0/39.0	72	6.0/33.0	18	7.0/9.0	78	11.0	36.0	47.0	21.0	10.0	7.0	4.0	12.0	16.0	18.0	81.0		

Team Averages

	JPN	Opponents
Points from Turnovers	16.0	12.0
Points in the Paint	34.0	52.0
Second Chance Points	9.0	16.0
Fast Break Points	12.0	8.0
Bench Points	19.0	32.0

GLOBAL PARTNERS



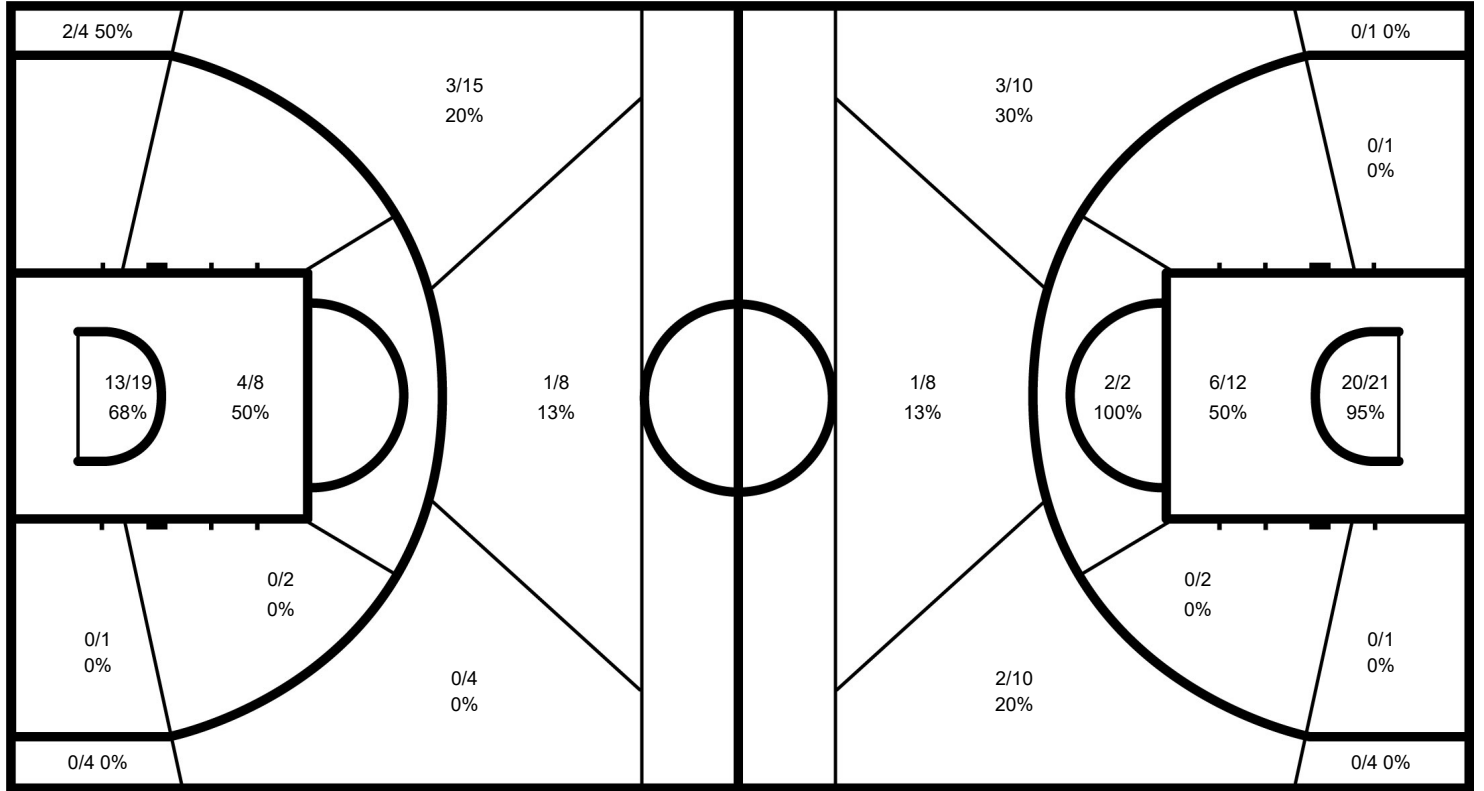


Cumulative Statistics
JPN - Japan
After 1 game

Phase	JPN Played	Score		Field Goals		2 Points		3 Points		Free Throws		Rebounds			AS	TO	ST	BS	PF	FD
				M / A	%	M / A	%	M / A	%	M / A	%	OR	DR	TOT						
Group Phase - 1st Round - Group E	GER	63-81	For	23/65	35	17/30	57	6/35	17	11/17	65	8	28	36	17	13	5	3	16	12
			Agg.	34/72	47	28/39	72	6/33	18	7/9	78	11	36	47	21	10	7	4	12	16

JPN - Japan

Opponents



JPN

	M / A	%
Field Goals	23 / 65	35
2 Points	17 / 30	57
3 Points	6 / 35	17
Free Throws	11 / 17	65

Opponents

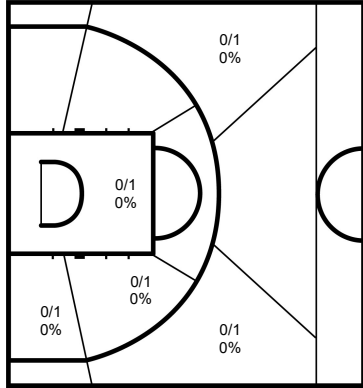
%	M / A	
47	34 / 72	Field Goals
72	28 / 39	2 Points
18	6 / 33	3 Points
78	7 / 9	Free Throws

GLOBAL PARTNERS



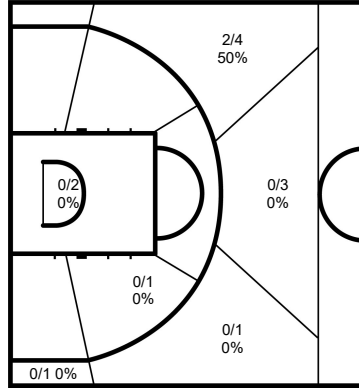
Cumulative Statistics
JPN - Japan
After 1 game

2 TOGASHI Yuki



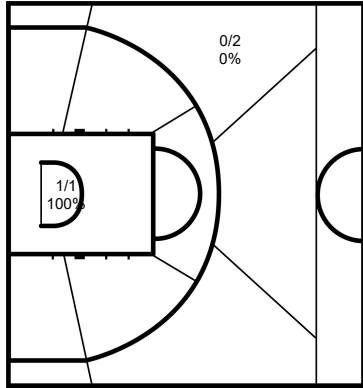
	M / A	%
Field Goals	0 / 5	0
2 Points	0 / 3	0
3 Points	0 / 2	0
Free Throws	0 / 2	0

5 KAWAMURA Yuki



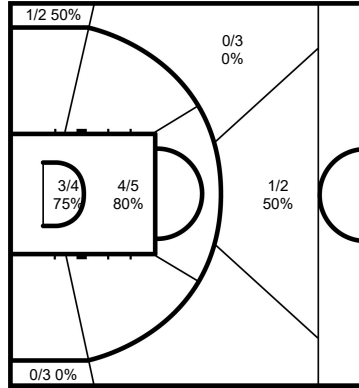
	M / A	%
Field Goals	2 / 12	17
2 Points	0 / 3	0
3 Points	2 / 9	22
Free Throws	1 / 2	50

6 HIEJIMA Makoto



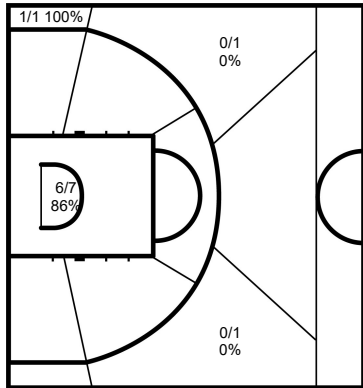
	M / A	%
Field Goals	1 / 3	33
2 Points	1 / 1	100
3 Points	0 / 2	0
Free Throws	0 / 1	0

12 WATANABE Yuta



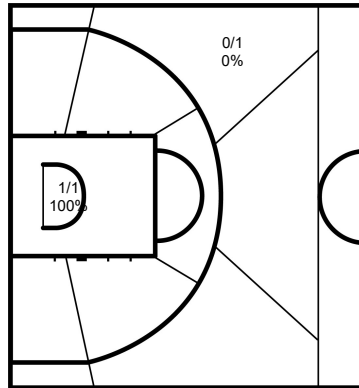
	M / A	%
Field Goals	9 / 19	47
2 Points	7 / 9	78
3 Points	2 / 10	20
Free Throws		

18 BABA Yudai



	M / A	%
Field Goals	7 / 10	70
2 Points	6 / 7	86
3 Points	1 / 3	33
Free Throws		

19 NISHIDA Yudai



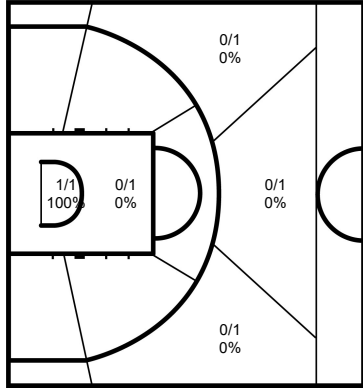
	M / A	%
Field Goals	1 / 2	50
2 Points	1 / 1	100
3 Points	0 / 1	0
Free Throws		

GLOBAL PARTNERS



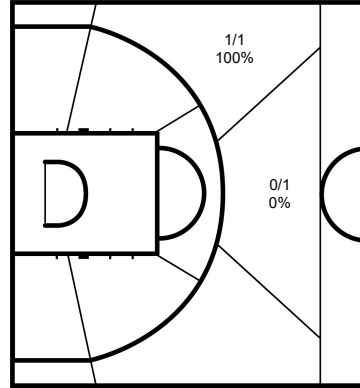
Cumulative Statistics
JPN - Japan
After 1 game

24 HAWKINSON Joshua



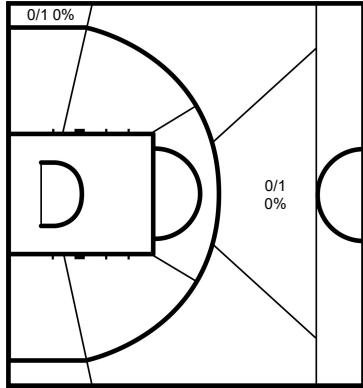
	M / A	%
Field Goals	1 / 5	20
2 Points	1 / 2	50
3 Points	0 / 3	0
Free Throws	7 / 8	88

30 TOMINAGA Keisei



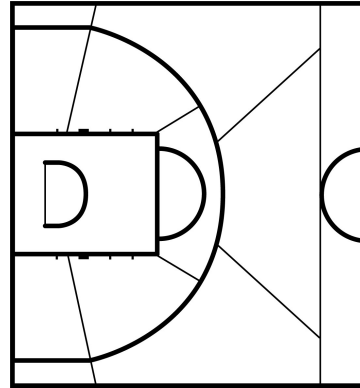
	M / A	%
Field Goals	1 / 2	50
2 Points		
3 Points	1 / 2	50
Free Throws	2 / 2	100

31 HARA Shuta



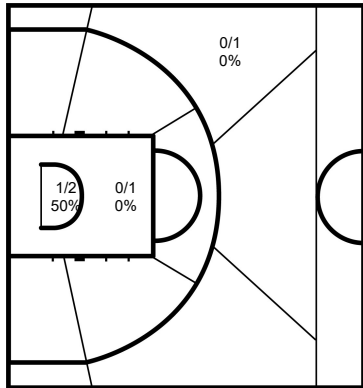
	M / A	%
Field Goals	0 / 2	0
2 Points		
3 Points	0 / 2	0
Free Throws		

75 INOUE Soichiro



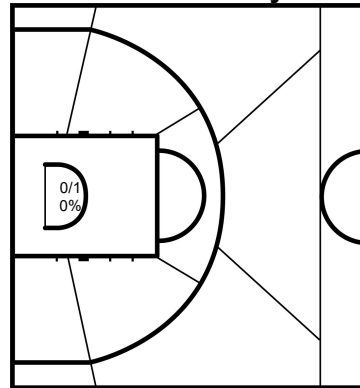
	M / A	%
Field Goals		
2 Points		
3 Points		
Free Throws		

91 YOSHII Hirotaka



	M / A	%
Field Goals	1 / 4	25
2 Points	1 / 3	33
3 Points	0 / 1	0
Free Throws	1 / 2	50

99 KAWAMATA Koya



	M / A	%
Field Goals	0 / 1	0
2 Points	0 / 1	0
3 Points		
Free Throws		

Legend:			
%	Shooting Percentage	(C)	Captain
BS	Blocked Shots	DR	Defensive Rebounds
MPG	Minutes Played per Game	No.	Uniform Number
PTS	Points	ST	Steals
+/-	Plus-Minus	FD	Fouls Drawn
OR	Offensive Rebounds	TOT	Total Rebounds
Agn.	Against	GP	Games Played
PF	Fouls	AS	Assists
		M / A	Made / Attempts
		PPG	Points per Game

WORLD CUP.BASKETBALL

GLOBAL PARTNERS

