

Cumulative Statistics

NZL - New Zealand

After 1 game

Player Totals

No.	Name	GP	Time Played	Field Goals		2 Points		3 Points		Free Throws		Rebounds			AS	TO	ST	BS	PF	FD	+/-	PTS				
				M/A	%	M/A	%	M/A	%	M/A	%	OR	DR	TOT												
1	TE RANGI Reuben (C)	1	29:52	6/16	38	3/8	38	3/8	38			1	1	2	1	1			3		-10	15				
2	LE'AFA Izayah	1	23:27	3/11	27	0/3	0	3/8	38				1	1	2	1	3		2		-17	9				
3	DELANY Finn	1	23:18	5/10	50	4/7	57	1/3	33	1/2	50		5	5	1	4		4	3	-4	12					
4	BRITT Taylor	1	5:41	1/3	33	1/3	33						1	1		1					-10	2				
5	ILI Shea	1	21:37	4/10	40	3/7	43	1/3	33	3/3	100	2	2	4	5	2	1		3	3	0	12				
7	WETZELL Yannick	1	22:24	4/8	50	4/8	50			2/4	50	1		1			1		3	5	-3	10				
11	CAMERON Flynn	1	13:19	2/9	22	1/4	25	1/5	20			2	2	4	1	3					-22	5				
16	SMITH-MILNER Tohi	1	10:56	0/1	0	0/1	0			3/3	100					2			1	1	-14	3				
20	NGATAI Jordan	1	23:16	0/1	0			0/1	0				2	2	2	3	1		3		-19					
22	HARRIS Hyrum	1	8:49									1	1	1	1	1			2	1	-19					
23	BROWN Walter James	1	2:48																		-3					
42	FOTU Isaac	1	14:33	2/5	40	2/5	40					2	3	5		1			2	4	-14	4				
Team / Coach													3	4	7											
Totals				27/74	36	18/46	39	9/28	32	9/12	75	11	22	33	13	19	7			23	17	-27	72			
Opponents				35/59	59	27/41	66	8/18	44	21/27	78	5	36	41	23	19	10	7		17	23	27	99			

Team Totals

	NZL	Opponents
Points from Turnovers	16	23
Points in the Paint	34 (17/42) 40%	40 (20/32) 63%
Second Chance Points	8	8
Fast Break Points	6	22
Bench Points	23	54

Player Averages

No.	Name	GP	MPG	Field Goals		2 Points		3 Points		Free Throws		Rebounds			AS	TO	ST	BS	PF	FD	+/-	PPG				
				M/A	%	M/A	%	M/A	%	M/A	%	OR	DR	TOT												
1	TE RANGI Reuben (C)	1	29:52	6.0/16.0	38	3.0/8.0	38	3.0/8.0	38			1.0	1.0	2.0	1.0	1.0			3.0		-10.0	15.0				
2	LE'AFA Izayah	1	23:27	3.0/11.0	27	0.0/3.0	0	3.0/8.0	38				1.0	1.0	2.0	1.0	3.0		2.0		-17.0	9.0				
3	DELANY Finn	1	23:18	5.0/10.0	50	4.0/7.0	57	1.0/3.0	33	1.0/2.0	50		5.0	5.0	1.0	4.0		4.0	3.0	-4.0	12.0					
4	BRITT Taylor	1	5:41	1.0/3.0	33	1.0/3.0	33						1.0	1.0		1.0	1.0				-10.0	2.0				
5	ILI Shea	1	21:37	4.0/10.0	40	3.0/7.0	43	1.0/3.0	33	3.0/3.0	100	2.0	2.0	4.0	5.0	2.0	1.0		3.0	3.0	0.0	12.0				
7	WETZELL Yannick	1	22:24	4.0/8.0	50	4.0/8.0	50			2.0/4.0	50	1.0		1.0		1.0		3.0	5.0	-3.0	10.0					
11	CAMERON Flynn	1	13:19	2.0/9.0	22	1.0/4.0	25	1.0/5.0	20			2.0	2.0	4.0	1.0	3.0					-22.0	5.0				
16	SMITH-MILNER Tohi	1	10:56	0.0/1.0	0	0.0/1.0	0			3.0/3.0	100					2.0			1.0	1.0	-14.0	3.0				
20	NGATAI Jordan	1	23:16	0.0/1.0	0			0.0/1.0	0				2.0	2.0	2.0	3.0	1.0		3.0		-19.0					
22	HARRIS Hyrum	1	8:49										1.0	1.0	1.0	1.0			2.0	1.0	-19.0					
23	BROWN Walter James	1	2:48																		-3.0					
42	FOTU Isaac	1	14:33	2.0/5.0	40	2.0/5.0	40					2.0	3.0	5.0		1.0			2.0	4.0	-14.0	4.0				
Team / Coach													3.0	4.0	7.0											
Totals				27.0/74.0	36	18.0/46.0	39	9.0/28.0	32	9.0/12.0	75	11.0	22.0	33.0	13.0	19.0	7.0			23.0	17.0	-27.0	72.0			
Opponents				35.0/59.0	59	27.0/41.0	66	8.0/18.0	44	21.0/27.0	78	5.0	36.0	41.0	23.0	19.0	10.0	7.0		17.0	23.0	27.0	99.0			

Team Averages

	NZL	Opponents
Points from Turnovers	16.0	23.0
Points in the Paint	34.0	40.0
Second Chance Points	8.0	8.0
Fast Break Points	6.0	22.0
Bench Points	23.0	54.0

GLOBAL PARTNERS

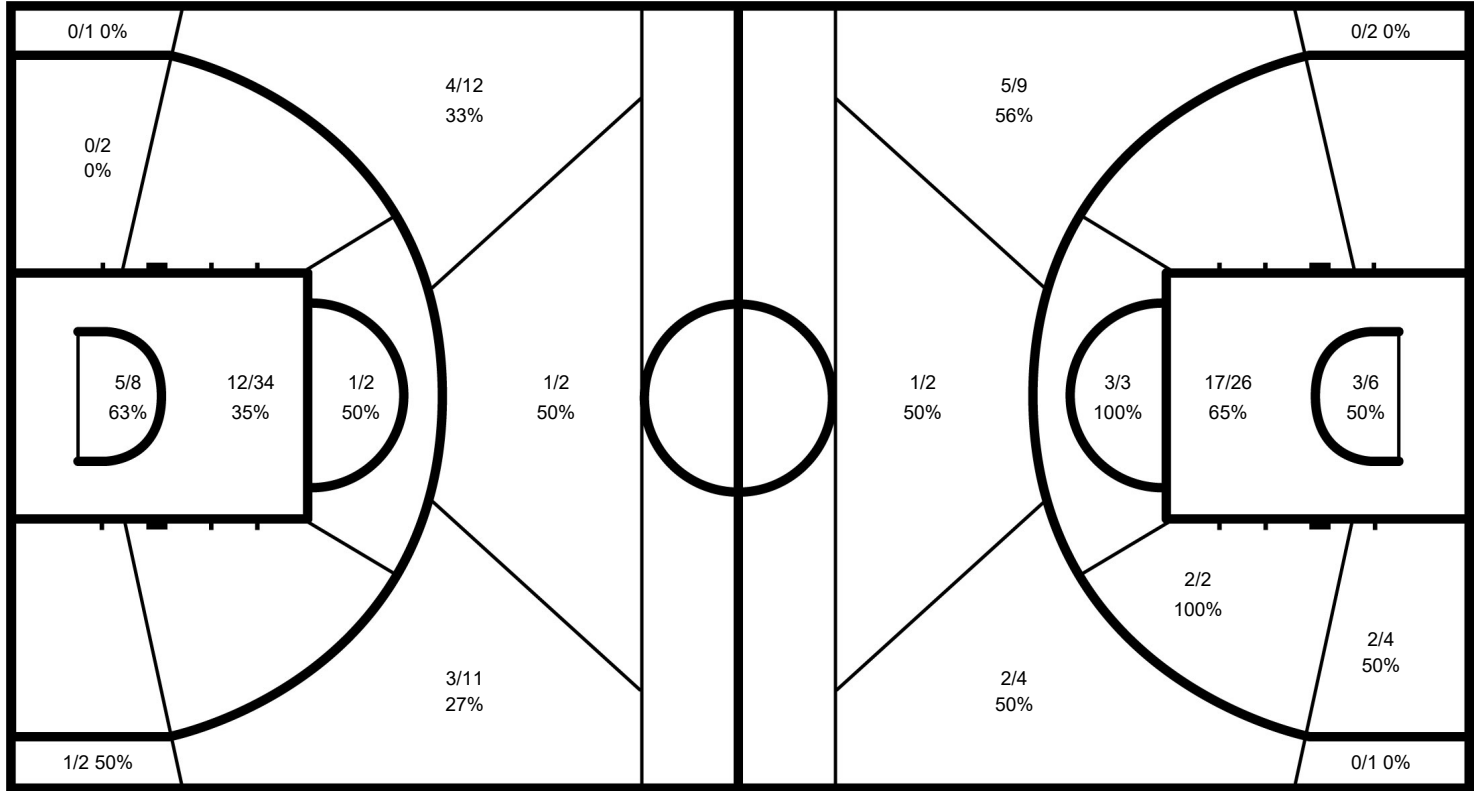


Cumulative Statistics
NZL - New Zealand
After 1 game

Phase	NZL Played	Score		Field Goals			2 Points			3 Points		Free Throws		Rebounds			AS	TO	ST	BS	PF	FD
				M / A	%	M / A	%	M / A	%	M / A	%	OR	DR	TOT								
Group Phase - 1st Round - Group C	USA	72-99	For	27/74	36	18/46	39	9/28	32	9/12	75	11	22	33	13	19	7		23	17		
			Agg.	35/59	59	27/41	66	8/18	44	21/27	78	5	36	41	23	19	10	7	17	23		

NZL - New Zealand

Opponents



NZL

	M / A	%
Field Goals	27 / 74	36
2 Points	18 / 46	39
3 Points	9 / 28	32
Free Throws	9 / 12	75

Opponents

%	M / A	
59	35 / 59	Field Goals
66	27 / 41	2 Points
44	8 / 18	3 Points
78	21 / 27	Free Throws

GLOBAL PARTNERS

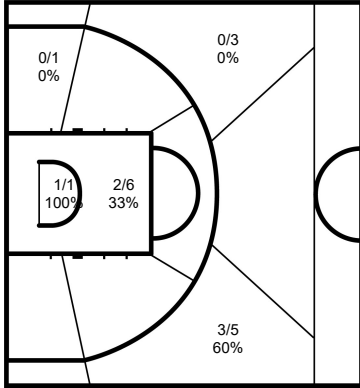


Cumulative Statistics

NZL - New Zealand

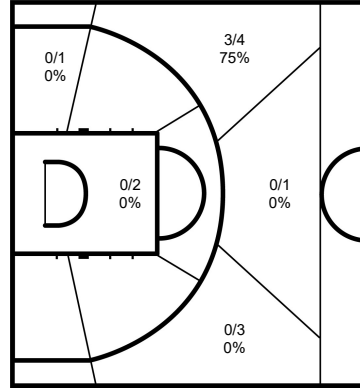
After 1 game

1 TE RANGI Reuben



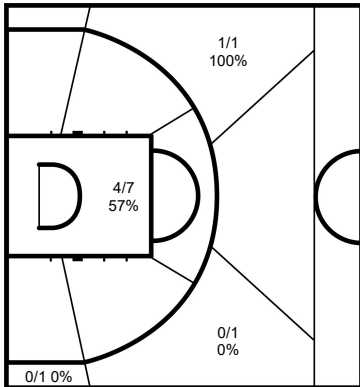
	M / A	%
Field Goals	6 / 16	38
2 Points	3 / 8	38
3 Points	3 / 8	38
Free Throws		

2 LE'AFA Izayah



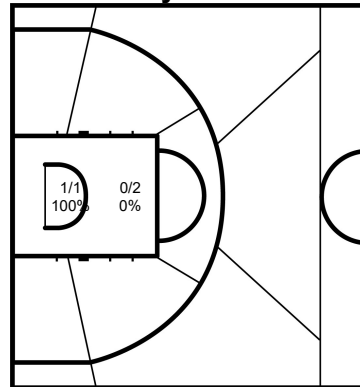
	M / A	%
Field Goals	3 / 11	27
2 Points	0 / 3	0
3 Points	3 / 8	38
Free Throws		

3 DELANY Finn



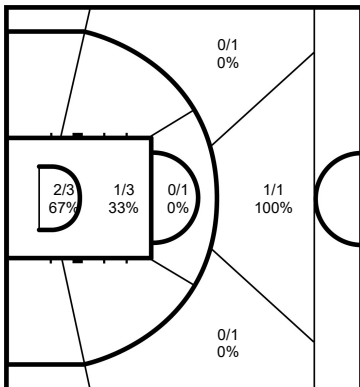
	M / A	%
Field Goals	5 / 10	50
2 Points	4 / 7	57
3 Points	1 / 3	33
Free Throws	1 / 2	50

4 BRITT Taylor



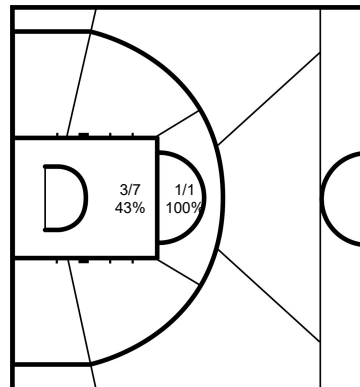
	M / A	%
Field Goals	1 / 3	33
2 Points	1 / 3	33
3 Points		
Free Throws		

5 ILI Shea



	M / A	%
Field Goals	4 / 10	40
2 Points	3 / 7	43
3 Points	1 / 3	33
Free Throws	3 / 3	100

7 WETZELL Yannick



	M / A	%
Field Goals	4 / 8	50
2 Points	4 / 8	50
3 Points		
Free Throws	2 / 4	50

GLOBAL PARTNERS

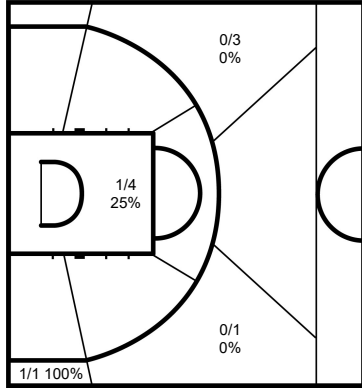


Cumulative Statistics

NZL - New Zealand

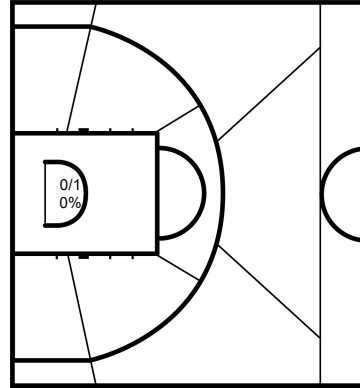
After 1 game

11 CAMERON Flynn



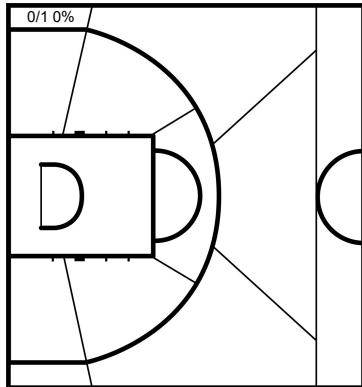
	M / A	%
Field Goals	2 / 9	22
2 Points	1 / 4	25
3 Points	1 / 5	20
Free Throws		

16 SMITH-MILNER Tohi



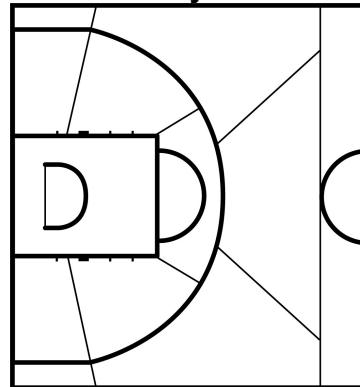
	M / A	%
Field Goals	0 / 1	0
2 Points	0 / 1	0
3 Points		
Free Throws	3 / 3	100

20 NGATAI Jordan



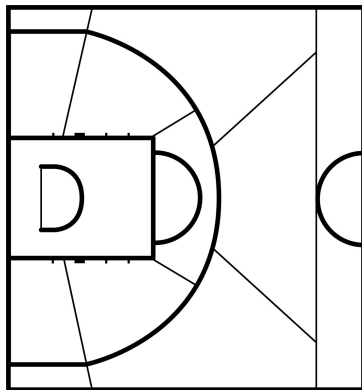
	M / A	%
Field Goals	0 / 1	0
2 Points		
3 Points	0 / 1	0
Free Throws		

22 HARRIS Hyrum



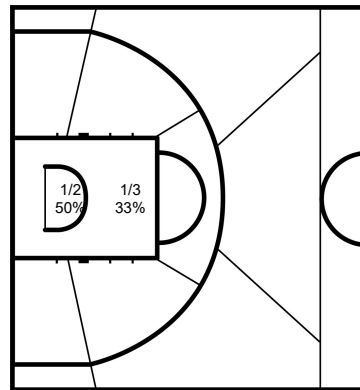
	M / A	%
Field Goals		
2 Points		
3 Points		
Free Throws		

23 BROWN Walter James



	M / A	%
Field Goals		
2 Points		
3 Points		
Free Throws		

42 FOTU Isaac



	M / A	%
Field Goals	2 / 5	40
2 Points	2 / 5	40
3 Points		
Free Throws		

Legend:			
%	Shooting Percentage	(C)	Captain
BS	Blocked Shots	DR	Defensive Rebounds
MPG	Minutes Played per Game	No.	Uniform Number
PTS	Points	ST	Steals
+/-	Plus-Minus	FD	Fouls Drawn
OR	Offensive Rebounds	GP	Games Played
TO	Turnovers	PF	Fouls
Agn.	Against	TOT	Total Rebounds
AS	Assists	M / A	Made / Attempts
PPG	Points per Game		

WORLD CUP.BASKETBALL

GLOBAL PARTNERS

