

Shot Chart

LTU 71 vs 45 BRA

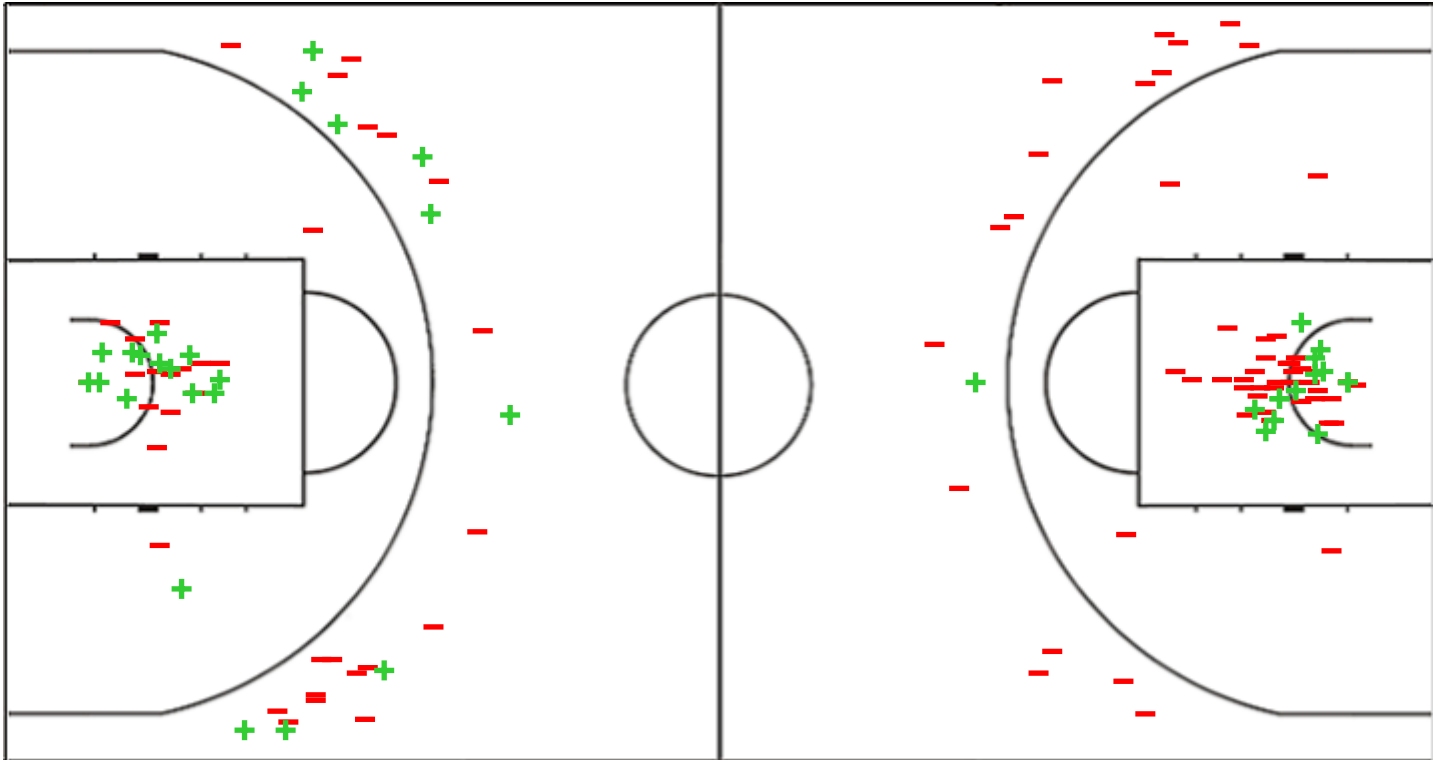
(21-2, 17-21, 16-12, 17-10)

Scoring by 5 min intervals:

	Q1		Q2		Q3		Q4	
LTU	11	21	32	38	47	54	66	71
BRA	2	2	14	23	26	35	37	45

LTU - Lithuania

BRA - Brazil



LTU	M / A	%
Fied Goals	23 / 57	40
2 Points	14 / 30	47
3 Points	9 / 27	33
Free Throws	16 / 27	59

%	M / A	BRA
21	15 / 71	Fied Goals
26	14 / 54	2 Points
6	1 / 17	3 Points
64	14 / 22	Free Throws

GLOBAL PARTNERS



Shot Chart

LTU 71 vs 45 BRA

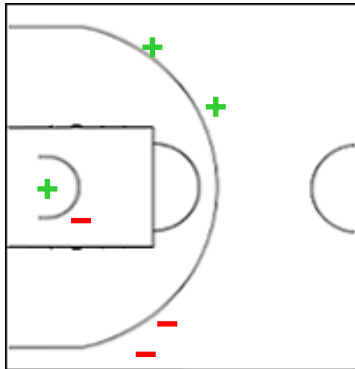
(21-2, 17-21, 16-12, 17-10)

Scoring by 5 min intervals:

	Q1		Q2		Q3		Q4	
LTU	11	21	32	38	47	54	66	71
BRA	2	2	14	23	26	35	37	45

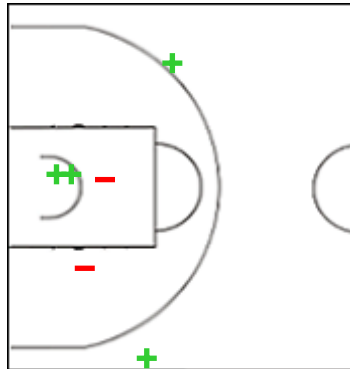
LTU - Lithuania

1 AUKSTIKALNYTE Sintija



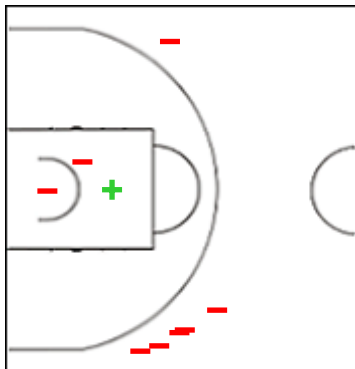
	M / A	%
Fied Goals	3 / 6	50
2 Points	1 / 2	50
3 Points	2 / 4	50
Free Throws	2 / 2	100

2 PLIATKUTE Neda



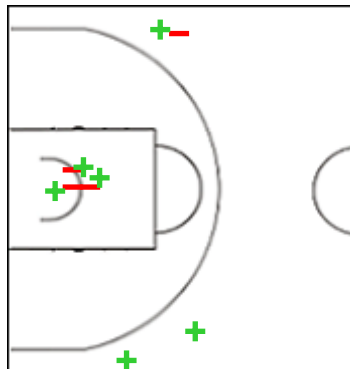
	M / A	%
Fied Goals	4 / 6	67
2 Points	2 / 4	50
3 Points	2 / 2	100
Free Throws	0 / 0	0

3 ANDRUNAVICIUTE Vilte



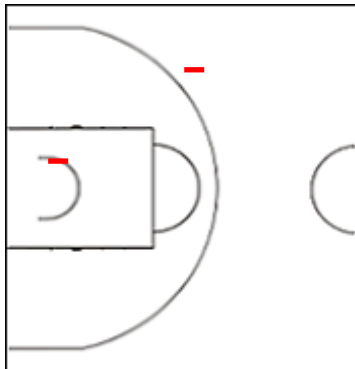
	M / A	%
Fied Goals	1 / 9	11
2 Points	1 / 3	33
3 Points	0 / 6	0
Free Throws	1 / 2	50

4 JOCYTE Juste



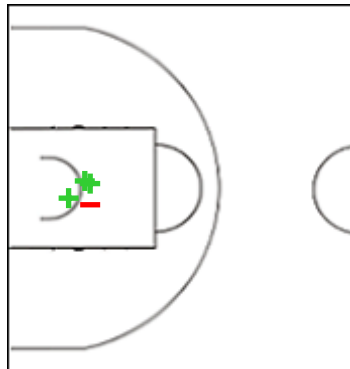
	M / A	%
Fied Goals	6 / 10	60
2 Points	3 / 6	50
3 Points	3 / 4	75
Free Throws	6 / 9	67

5 PUPKEVICIUTE Vivien



	M / A	%
Fied Goals	0 / 2	0
2 Points	0 / 1	0
3 Points	0 / 1	0
Free Throws	0 / 0	0

8 RAULUSAITYTE Gerda



	M / A	%
Fied Goals	3 / 4	75
2 Points	3 / 4	75
3 Points	0 / 0	0
Free Throws	1 / 6	17

GLOBAL PARTNERS



Shot Chart

LTU 71 vs 45 BRA

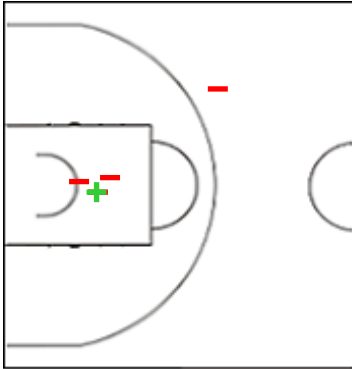
(21-2, 17-21, 16-12, 17-10)

Scoring by 5 min intervals:

	Q1		Q2		Q3		Q4	
LTU	11	21	32	38	47	54	66	71
BRA	2	2	14	23	26	35	37	45

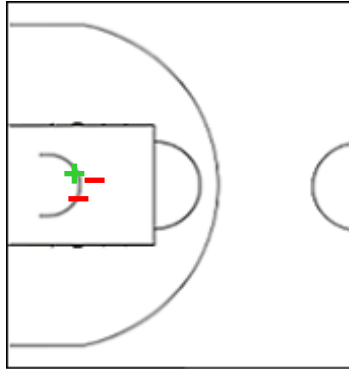
LTU - Lithuania

11 SIRTAUTAITE Ugne



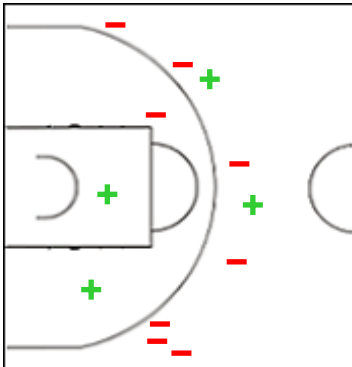
	M / A	%
Fied Goals	1 / 5	20
2 Points	1 / 4	25
3 Points	0 / 1	0
Free Throws	4 / 6	67

14 GRIGALIUNAITE Ugne



	M / A	%
Fied Goals	1 / 3	33
2 Points	1 / 3	33
3 Points	0 / 0	0
Free Throws	0 / 0	0

23 AUGUSTINAITE Rusne



	M / A	%
Fied Goals	4 / 12	33
2 Points	2 / 3	67
3 Points	2 / 9	22
Free Throws	2 / 2	100

GLOBAL PARTNERS



Shot Chart

LTU 71 vs 45 BRA

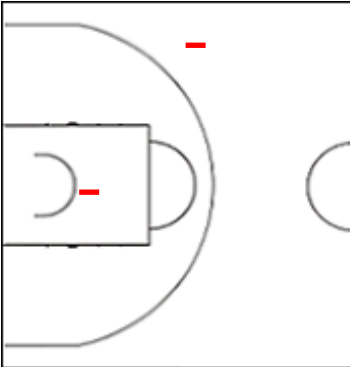
(21-2, 17-21, 16-12, 17-10)

Scoring by 5 min intervals:

	Q1		Q2		Q3		Q4	
LTU	11	21	32	38	47	54	66	71
BRA	2	2	14	23	26	35	37	45

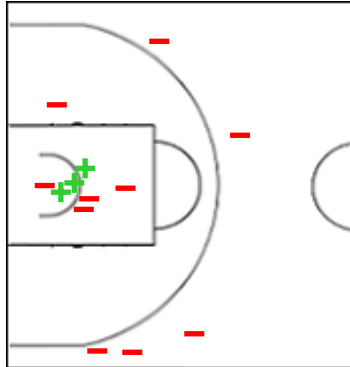
BRA - Brazil

4 PRANDE FREITAS Marcella



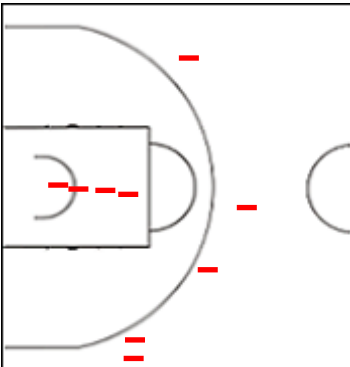
	M / A	%
Fied Goals	0 / 2	0
2 Points	0 / 1	0
3 Points	0 / 1	0
Free Throws	0 / 0	0

6 PASSOS ALVES DA SILVA



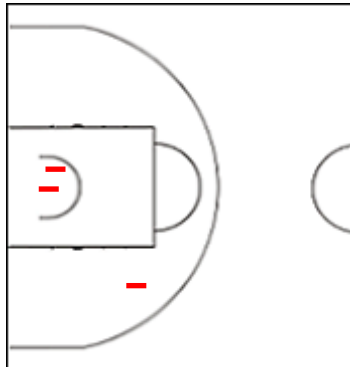
	M / A	%
Fied Goals	3 / 13	23
2 Points	3 / 8	38
3 Points	0 / 5	0
Free Throws	2 / 2	100

10 DE OLIVEIRA Ana Paula



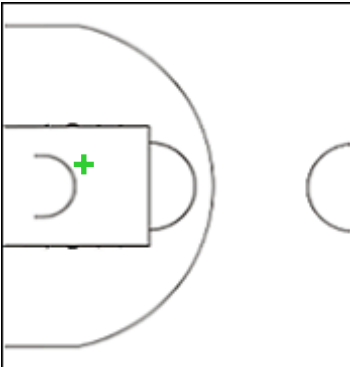
	M / A	%
Fied Goals	0 / 9	0
2 Points	0 / 4	0
3 Points	0 / 5	0
Free Throws	0 / 0	0

11 ORANGE BORGES Clarice



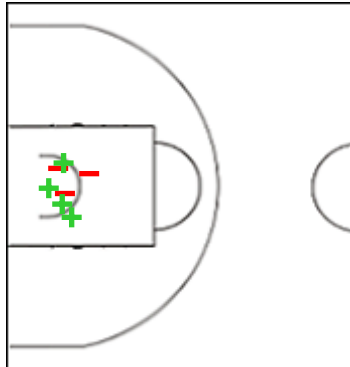
	M / A	%
Fied Goals	0 / 3	0
2 Points	0 / 3	0
3 Points	0 / 0	0
Free Throws	2 / 2	100

12 ARAUJO DAGBA Alexia



	M / A	%
Fied Goals	1 / 1	100
2 Points	1 / 1	100
3 Points	0 / 0	0
Free Throws	2 / 3	67

13 ROCHA DA SILVA Giovanna



	M / A	%
Fied Goals	4 / 7	57
2 Points	4 / 7	57
3 Points	0 / 0	0
Free Throws	2 / 6	33

GLOBAL PARTNERS



Shot Chart

LTU 71 vs 45 BRA

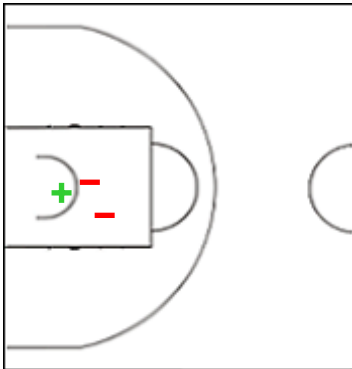
(21-2, 17-21, 16-12, 17-10)

Scoring by 5 min intervals:

	Q1		Q2		Q3		Q4	
LTU	11	21	32	38	47	54	66	71
BRA	2	2	14	23	26	35	37	45

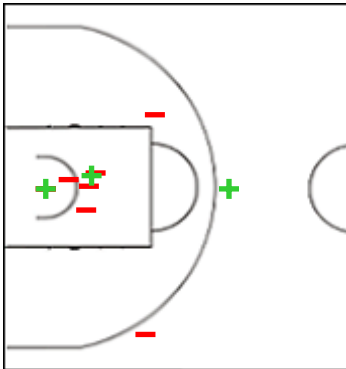
BRA - Brazil

14 DUPPRE CARRERA Heloisa



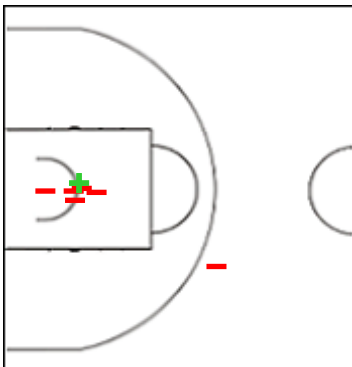
	M / A	%
Fied Goals	1 / 3	33
2 Points	1 / 3	33
3 Points	0 / 0	0
Free Throws	0 / 1	0

16 FRANCISCO DE OLIVEIRA



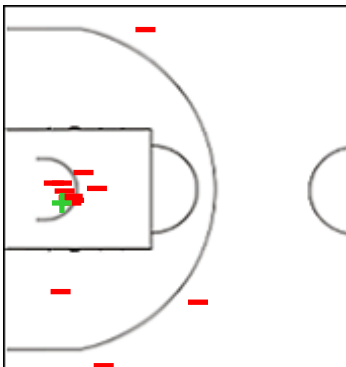
	M / A	%
Fied Goals	3 / 11	27
2 Points	2 / 9	22
3 Points	1 / 2	50
Free Throws	0 / 0	0

21 ALVES Manuella



	M / A	%
Fied Goals	2 / 8	25
2 Points	2 / 7	29
3 Points	0 / 1	0
Free Throws	2 / 4	50

55 NASCIMENTO QUEIROZ



	M / A	%
Fied Goals	1 / 14	7
2 Points	1 / 11	9
3 Points	0 / 3	0
Free Throws	4 / 4	100

GLOBAL PARTNERS





Shot Chart

LTU 71 vs 45 BRA

(21-2, 17-21, 16-12, 17-10)

Scoring by 5 min intervals:

	Q1		Q2		Q3		Q4	
LTU	11	21	32	38	47	54	66	71
BRA	2	2	14	23	26	35	37	45

LTU - Lithuania

BRA - Brazil



	M / A	%
Fied Goals	23 / 57	40
2 Points	14 / 30	47
3 Points	9 / 27	33
Free Throws	16 / 27	59

%	M / A	
21	15 / 71	Fied Goals
26	14 / 54	2 Points
6	1 / 17	3 Points
64	14 / 22	Free Throws

GLOBAL PARTNERS

