

Shot Chart

TPE 68 vs 83 MLI

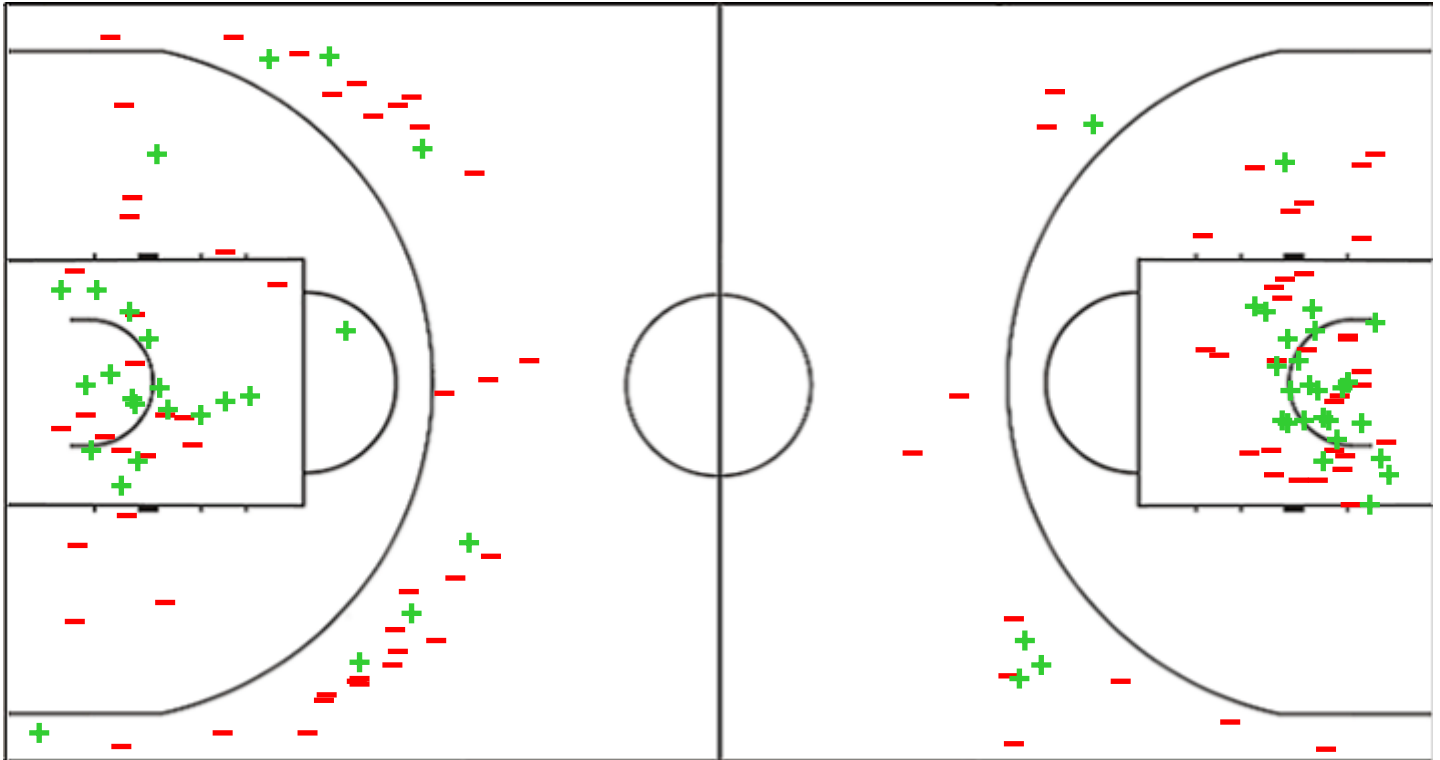
(22-21, 14-24, 8-18, 24-20)

Scoring by 5 min intervals:

	Q1		Q2		Q3		Q4	
TPE	12	22	34	36	40	44	54	68
MLI	10	21	31	45	58	63	76	83

TPE - Chinese Taipei

MLI - Mali



TPE	M / A	%
Fied Goals	25 / 73	34
2 Points	18 / 38	47
3 Points	7 / 35	20
Free Throws	11 / 14	79

%	M / A	MLI
43	31 / 72	Fied Goals
47	27 / 58	2 Points
29	4 / 14	3 Points
68	17 / 25	Free Throws

GLOBAL PARTNERS



Shot Chart

TPE 68 vs 83 MLI

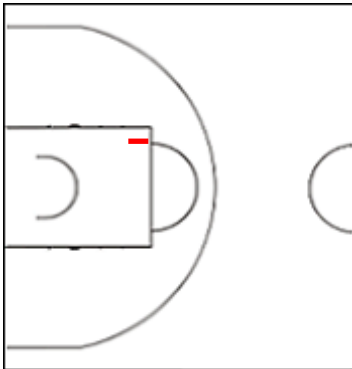
(22-21, 14-24, 8-18, 24-20)

Scoring by 5 min intervals:

	Q1		Q2		Q3		Q4	
TPE	12	22	34	36	40	44	54	68
MLI	10	21	31	45	58	63	76	83

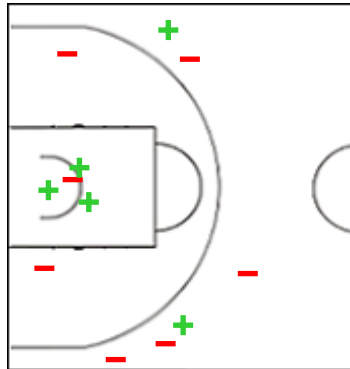
TPE - Chinese Taipei

4 WANG Shih Han



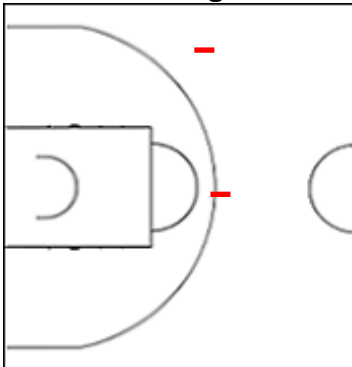
	M / A	%
Fied Goals	0 / 1	0
2 Points	0 / 1	0
3 Points	0 / 0	0
Free Throws	0 / 0	0

5 SUNG Jui Chen



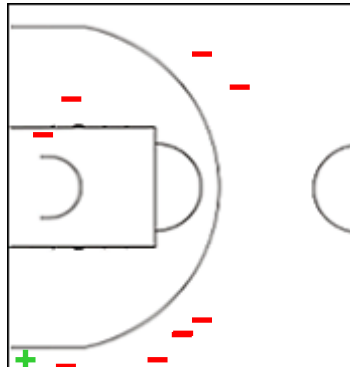
	M / A	%
Fied Goals	5 / 12	42
2 Points	3 / 6	50
3 Points	2 / 6	33
Free Throws	0 / 0	0

6 YANG Hsing En



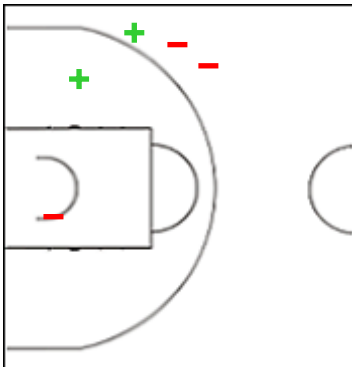
	M / A	%
Fied Goals	0 / 2	0
2 Points	0 / 0	0
3 Points	0 / 2	0
Free Throws	4 / 4	100

7 LI En Hsin



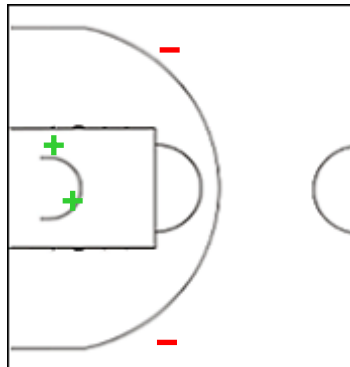
	M / A	%
Fied Goals	1 / 10	10
2 Points	0 / 2	0
3 Points	1 / 8	13
Free Throws	3 / 4	75

8 SU Tien Hsin



	M / A	%
Fied Goals	2 / 5	40
2 Points	1 / 2	50
3 Points	1 / 3	33
Free Throws	0 / 0	0

9 CHANG Chia Hsuan



	M / A	%
Fied Goals	2 / 4	50
2 Points	2 / 2	100
3 Points	0 / 2	0
Free Throws	1 / 2	50

GLOBAL PARTNERS

Shot Chart

TPE 68 vs 83 MLI

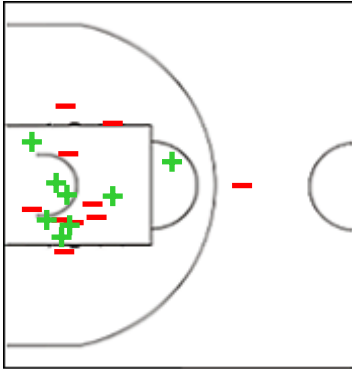
(22-21, 14-24, 8-18, 24-20)

Scoring by 5 min intervals:

	Q1		Q2		Q3		Q4	
TPE	12	22	34	36	40	44	54	68
MLI	10	21	31	45	58	63	76	83

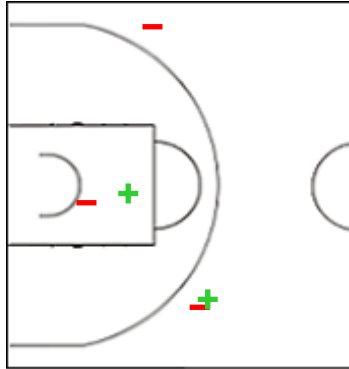
TPE - Chinese Taipei

11 HSIAO Yu Wen



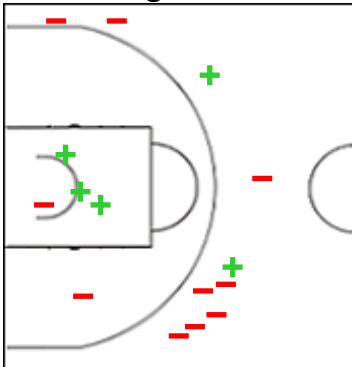
	M / A	%
Fied Goals	8 / 18	44
2 Points	8 / 17	47
3 Points	0 / 1	0
Free Throws	3 / 4	75

12 YU Chin Hua



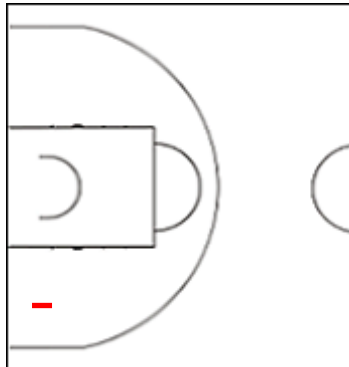
	M / A	%
Fied Goals	2 / 5	40
2 Points	1 / 2	50
3 Points	1 / 3	33
Free Throws	0 / 0	0

14 MI Jing En



	M / A	%
Fied Goals	5 / 15	33
2 Points	3 / 5	60
3 Points	2 / 10	20
Free Throws	0 / 0	0

15 HUANG Tzu Yun



	M / A	%
Fied Goals	0 / 1	0
2 Points	0 / 1	0
3 Points	0 / 0	0
Free Throws	0 / 0	0

GLOBAL PARTNERS



Shot Chart

TPE 68 vs 83 MLI

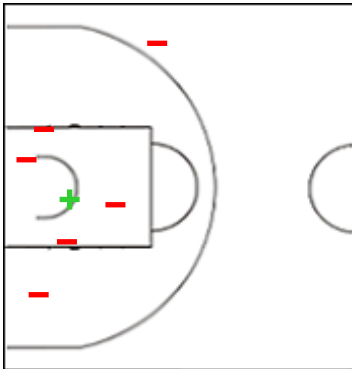
(22-21, 14-24, 8-18, 24-20)

Scoring by 5 min intervals:

	Q1		Q2		Q3		Q4	
TPE	12	22	34	36	40	44	54	68
MLI	10	21	31	45	58	63	76	83

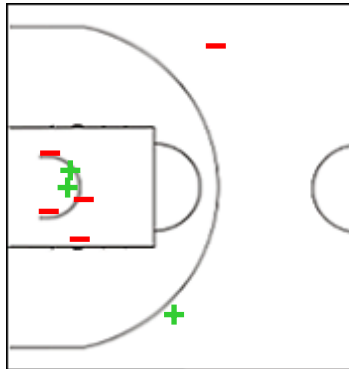
MLI - Mali

2 DABOU Kamite Elisabeth



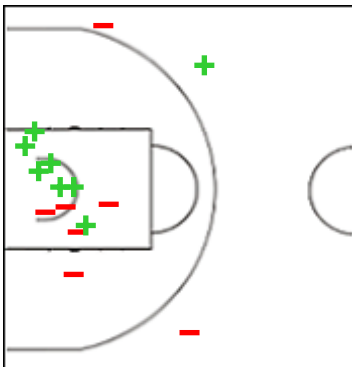
	M / A	%
Fied Goals	1 / 7	14
2 Points	1 / 6	17
3 Points	0 / 1	0
Free Throws	6 / 10	60

4 SANOU Fatoumata



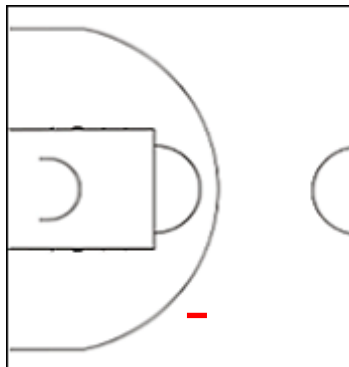
	M / A	%
Fied Goals	3 / 8	38
2 Points	2 / 6	33
3 Points	1 / 2	50
Free Throws	3 / 4	75

5 THIENOU Sira



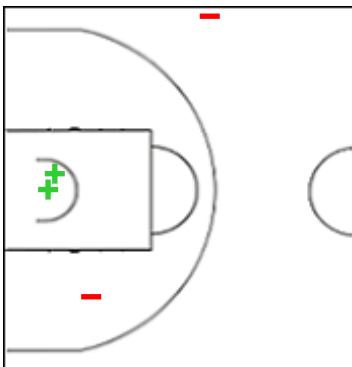
	M / A	%
Fied Goals	8 / 15	53
2 Points	7 / 12	58
3 Points	1 / 3	33
Free Throws	3 / 3	100

6 DRAME Bintou



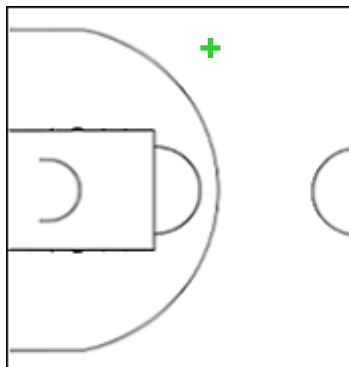
	M / A	%
Fied Goals	0 / 1	0
2 Points	0 / 0	0
3 Points	0 / 1	0
Free Throws	0 / 0	0

7 SARR Mariam Ibrahim



	M / A	%
Fied Goals	2 / 4	50
2 Points	2 / 3	67
3 Points	0 / 1	0
Free Throws	0 / 2	0

8 DOUMBIA Badiaran



	M / A	%
Fied Goals	1 / 1	100
2 Points	0 / 0	0
3 Points	1 / 1	100
Free Throws	0 / 0	0

GLOBAL PARTNERS



Shot Chart

TPE 68 vs 83 MLI

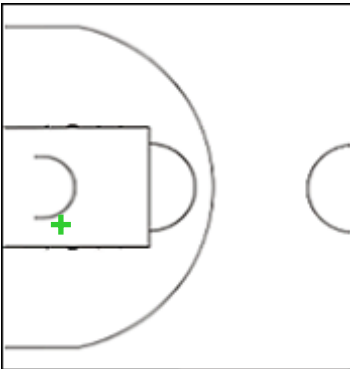
(22-21, 14-24, 8-18, 24-20)

Scoring by 5 min intervals:

	Q1		Q2		Q3		Q4	
TPE	12	22	34	36	40	44	54	68
MLI	10	21	31	45	58	63	76	83

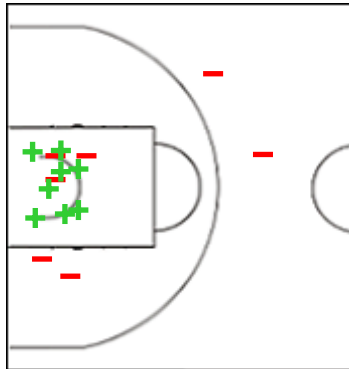
MLI - Mali

9 TRAORE Mariam



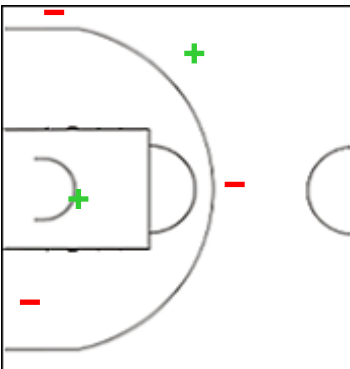
	M / A	%
Fied Goals	1 / 1	100
2 Points	1 / 1	100
3 Points	0 / 0	0
Free Throws	0 / 0	0

10 HAIDARA Maimouna



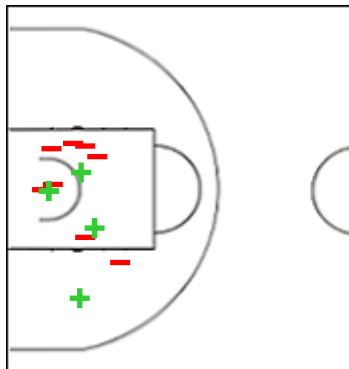
	M / A	%
Fied Goals	8 / 15	53
2 Points	8 / 13	62
3 Points	0 / 2	0
Free Throws	3 / 4	75

11 BERTHE Rokiatou



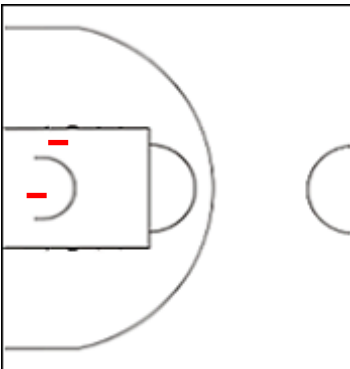
	M / A	%
Fied Goals	2 / 5	40
2 Points	1 / 2	50
3 Points	1 / 3	33
Free Throws	0 / 0	0

12 CISSE Mama



	M / A	%
Fied Goals	5 / 13	38
2 Points	5 / 13	38
3 Points	0 / 0	0
Free Throws	2 / 2	100

15 DABO Oumou



	M / A	%
Fied Goals	0 / 2	0
2 Points	0 / 2	0
3 Points	0 / 0	0
Free Throws	0 / 0	0

GLOBAL PARTNERS



Shot Chart

TPE 68 vs 83 MLI

(22-21, 14-24, 8-18, 24-20)

Scoring by 5 min intervals:

	Q1		Q2		Q3		Q4	
TPE	12	22	34	36	40	44	54	68
MLI	10	21	31	45	58	63	76	83

TPE - Chinese Taipei

MLI - Mali



	M / A	%
Fied Goals	25 / 73	34
2 Points	18 / 38	47
3 Points	7 / 35	20
Free Throws	11 / 14	79

%	M / A	
43	31 / 72	Fied Goals
47	27 / 58	2 Points
29	4 / 14	3 Points
68	17 / 25	Free Throws

GLOBAL PARTNERS

