

Shot Chart

CHN 56 vs 60 EGY

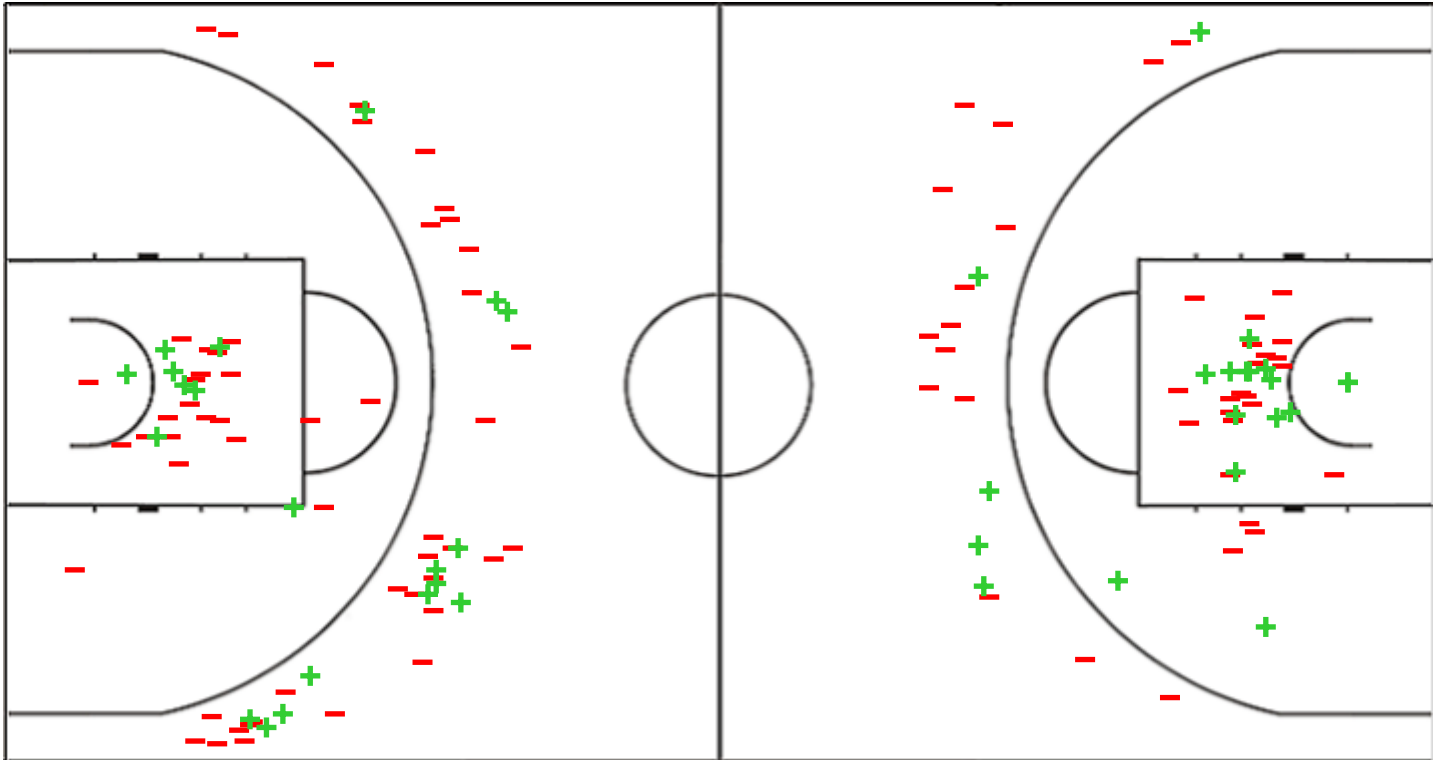
(27-5, 17-15, 8-20, 4-20)

Scoring by 5 min intervals:

	Q1		Q2		Q3		Q4	
CHN	15	27	35	44	47	52	52	56
EGY	0	5	12	20	34	40	52	60

CHN - People 's Republic of China

EGY - Egypt



CHN	M / A	%
Fied Goals	20 / 73	27
2 Points	8 / 29	28
3 Points	12 / 44	27
Free Throws	4 / 7	57

%	M / A	EGY
35	20 / 57	Fied Goals
41	15 / 37	2 Points
25	5 / 20	3 Points
68	15 / 22	Free Throws

GLOBAL PARTNERS



Shot Chart

CHN 56 vs 60 EGY

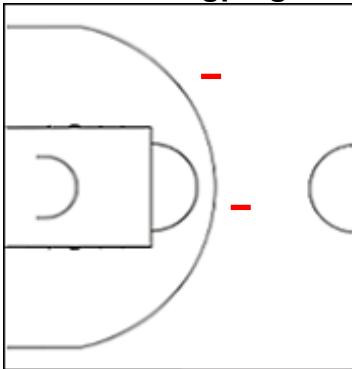
(27-5, 17-15, 8-20, 4-20)

Scoring by 5 min intervals:

	Q1		Q2		Q3		Q4	
CHN	15	27	35	44	47	52	52	56
EGY	0	5	12	20	34	40	52	60

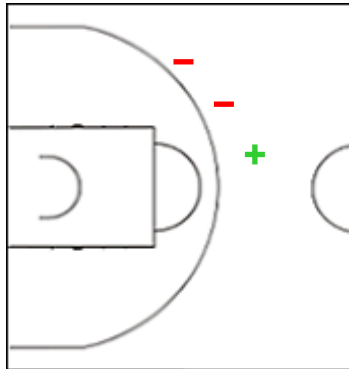
CHN - People 's Republic of China

4 YANG Mengping



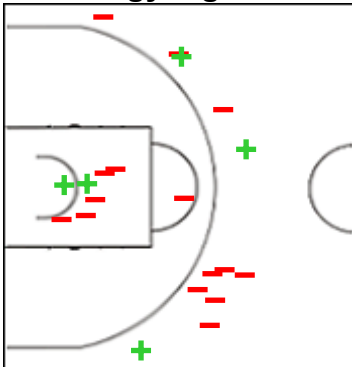
	M / A	%
Fied Goals	0 / 2	0
2 Points	0 / 0	0
3 Points	0 / 2	0
Free Throws	0 / 0	0

6 CHU Huixuan



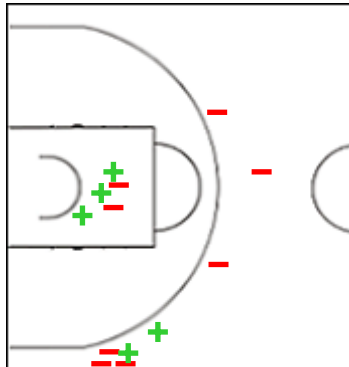
	M / A	%
Fied Goals	1 / 3	33
2 Points	0 / 0	0
3 Points	1 / 3	33
Free Throws	1 / 2	50

9 LI Qingyang



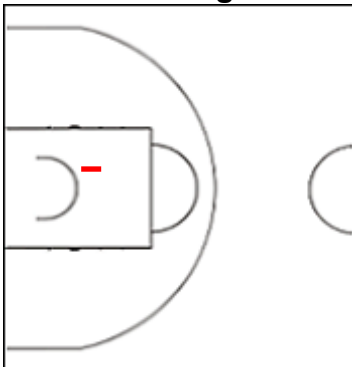
	M / A	%
Fied Goals	5 / 20	25
2 Points	2 / 8	25
3 Points	3 / 12	25
Free Throws	0 / 0	0

10 LI Wenxia



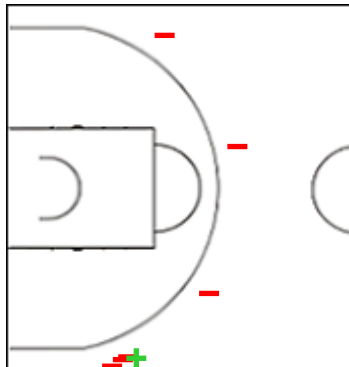
	M / A	%
Fied Goals	5 / 13	38
2 Points	3 / 5	60
3 Points	2 / 8	25
Free Throws	1 / 2	50

11 FENG Guoguo



	M / A	%
Fied Goals	0 / 1	0
2 Points	0 / 1	0
3 Points	0 / 0	0
Free Throws	0 / 0	0

13 LI Jialin



	M / A	%
Fied Goals	1 / 7	14
2 Points	0 / 0	0
3 Points	1 / 7	14
Free Throws	0 / 0	0

GLOBAL PARTNERS



Shot Chart

CHN 56 vs 60 EGY

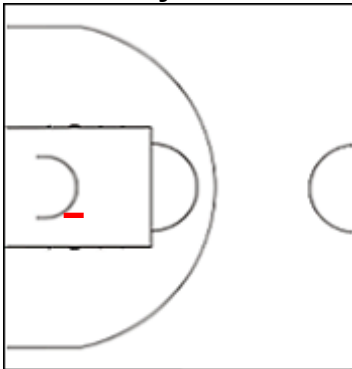
(27-5, 17-15, 8-20, 4-20)

Scoring by 5 min intervals:

	Q1		Q2		Q3		Q4	
CHN	15	27	35	44	47	52	52	56
EGY	0	5	12	20	34	40	52	60

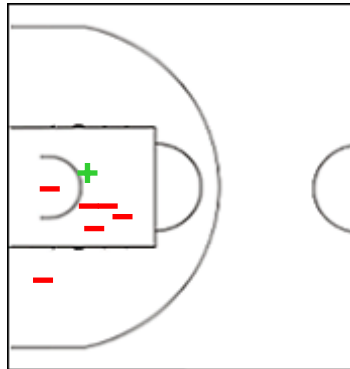
CHN - People 's Republic of China

15 LIU Jiayu



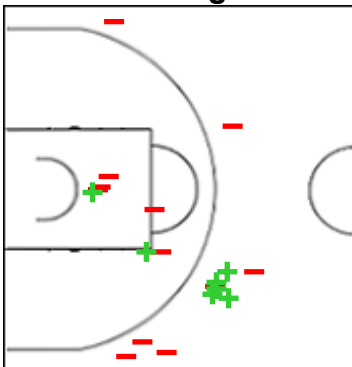
	M / A	%
Fied Goals	0 / 1	0
2 Points	0 / 1	0
3 Points	0 / 0	0
Free Throws	0 / 0	0

17 ZHANG Xiao



	M / A	%
Fied Goals	1 / 7	14
2 Points	1 / 7	14
3 Points	0 / 0	0
Free Throws	0 / 1	0

19 HU Duoling



	M / A	%
Fied Goals	7 / 19	37
2 Points	2 / 7	29
3 Points	5 / 12	42
Free Throws	2 / 2	100

GLOBAL PARTNERS



Shot Chart

CHN 56 vs 60 EGY

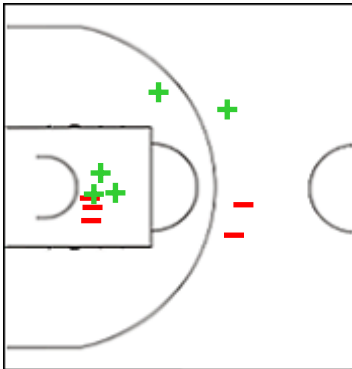
(27-5, 17-15, 8-20, 4-20)

Scoring by 5 min intervals:

	Q1		Q2		Q3		Q4	
CHN	15	27	35	44	47	52	52	56
EGY	0	5	12	20	34	40	52	60

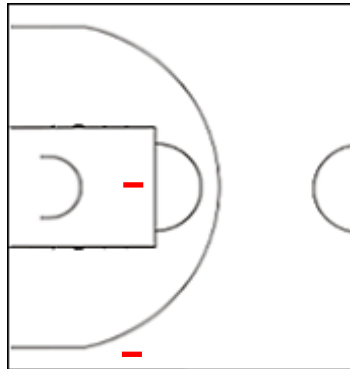
EGY - Egypt

00 SALLMAN Jana



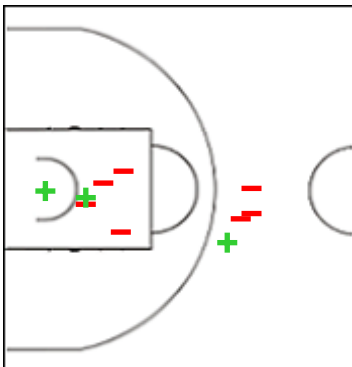
	M / A	%
Fied Goals	5 / 10	50
2 Points	4 / 7	57
3 Points	1 / 3	33
Free Throws	2 / 2	100

1 ELSHAMY JANA



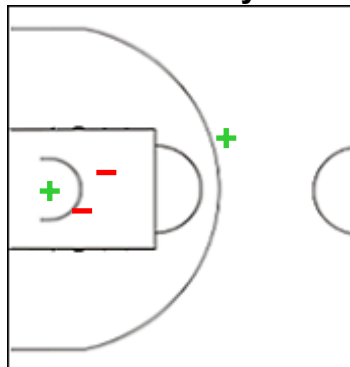
	M / A	%
Fied Goals	0 / 2	0
2 Points	0 / 1	0
3 Points	0 / 1	0
Free Throws	0 / 0	0

8 ELALFY Jana



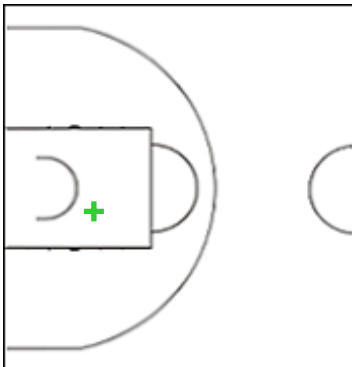
	M / A	%
Fied Goals	3 / 10	30
2 Points	2 / 6	33
3 Points	1 / 4	25
Free Throws	8 / 8	100

9 ELMASRY Jayda Khaled



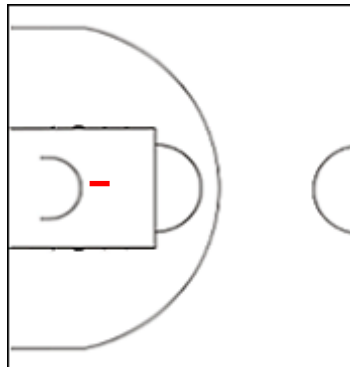
	M / A	%
Fied Goals	2 / 4	50
2 Points	1 / 3	33
3 Points	1 / 1	100
Free Throws	1 / 4	25

12 ELSHEBSHERY Judy



	M / A	%
Fied Goals	1 / 1	100
2 Points	1 / 1	100
3 Points	0 / 0	0
Free Throws	0 / 0	0

15 AHMED Jana



	M / A	%
Fied Goals	0 / 1	0
2 Points	0 / 1	0
3 Points	0 / 0	0
Free Throws	0 / 0	0

Shot Chart

CHN 56 vs 60 EGY

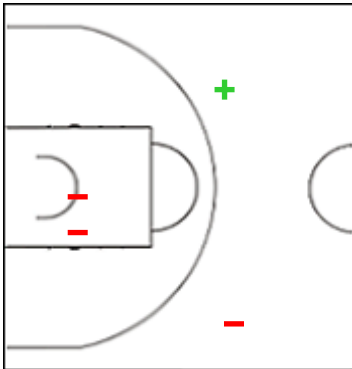
(27-5, 17-15, 8-20, 4-20)

Scoring by 5 min intervals:

	Q1		Q2		Q3		Q4	
CHN	15	27	35	44	47	52	52	56
EGY	0	5	12	20	34	40	52	60

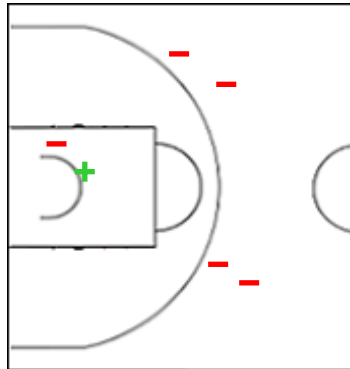
EGY - Egypt

22 METWALLY Sarah



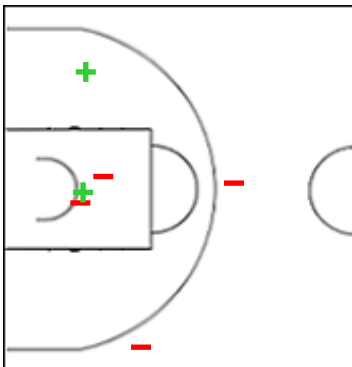
	M / A	%
Fied Goals	1 / 4	25
2 Points	0 / 2	0
3 Points	1 / 2	50
Free Throws	0 / 0	0

24 HASSAN Aisha Mohamed



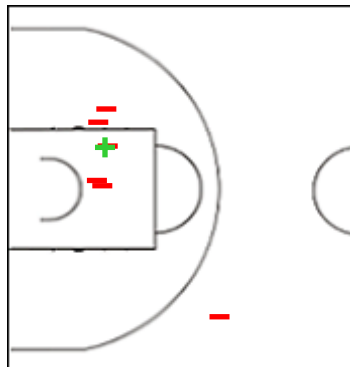
	M / A	%
Fied Goals	1 / 6	17
2 Points	1 / 2	50
3 Points	0 / 4	0
Free Throws	0 / 0	0

32 EBRAHIM Nour



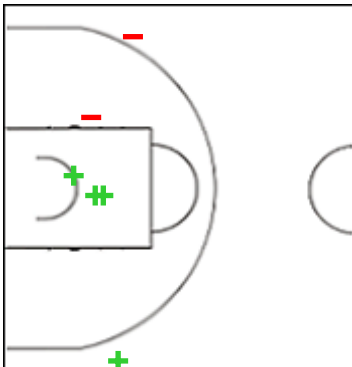
	M / A	%
Fied Goals	2 / 6	33
2 Points	2 / 4	50
3 Points	0 / 2	0
Free Throws	1 / 2	50

33 IBRAHIM Tamara



	M / A	%
Fied Goals	1 / 7	14
2 Points	1 / 6	17
3 Points	0 / 1	0
Free Throws	3 / 4	75

34 HASSAN Salma Mostafa



	M / A	%
Fied Goals	4 / 6	67
2 Points	3 / 4	75
3 Points	1 / 2	50
Free Throws	0 / 2	0

GLOBAL PARTNERS





Shot Chart

CHN 56 vs 60 EGY

(27-5, 17-15, 8-20, 4-20)

Scoring by 5 min intervals:

	Q1		Q2		Q3		Q4	
CHN	15	27	35	44	47	52	52	56
EGY	0	5	12	20	34	40	52	60

CHN - People 's Republic of China

EGY - Egypt



	M / A	%
Fied Goals	20 / 73	27
2 Points	8 / 29	28
3 Points	12 / 44	27
Free Throws	4 / 7	57

%	M / A	
35	20 / 57	Fied Goals
41	15 / 37	2 Points
25	5 / 20	3 Points
68	15 / 22	Free Throws

GLOBAL PARTNERS

