

Shot Chart

LTU 86 vs 64 EGY

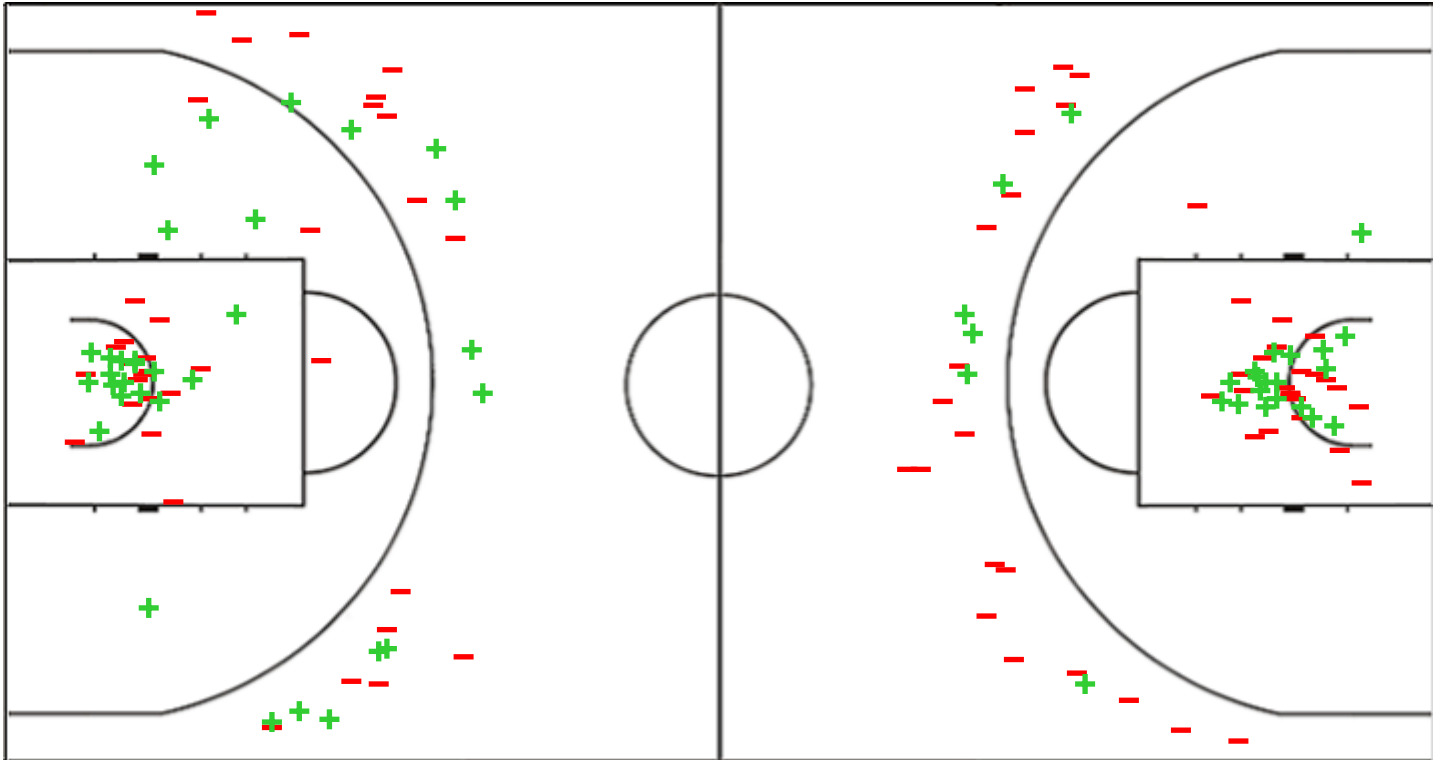
(18-24, 22-13, 28-13, 18-14)

Scoring by 5 min intervals:

	Q1		Q2		Q3		Q4	
LTU	12	18	30	40	54	68	79	86
EGY	9	24	30	37	42	50	52	64

LTU - Lithuania

EGY - Egypt



LTU	M / A	%
Fied Goals	32 / 68	47
2 Points	21 / 42	50
3 Points	11 / 26	42
Free Throws	11 / 16	69

%	M / A	EGY
37	25 / 68	Fied Goals
45	19 / 42	2 Points
23	6 / 26	3 Points
80	8 / 10	Free Throws

GLOBAL PARTNERS



Shot Chart

LTU 86 vs 64 EGY

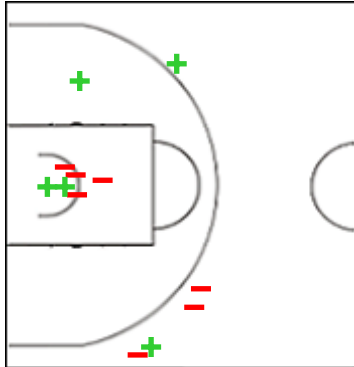
(18-24, 22-13, 28-13, 18-14)

Scoring by 5 min intervals:

	Q1		Q2		Q3		Q4	
LTU	12	18	30	40	54	68	79	86
EGY	9	24	30	37	42	50	52	64

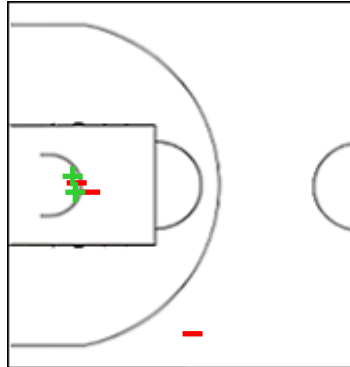
LTU - Lithuania

1 AUKSTIKALNYTE Sintija



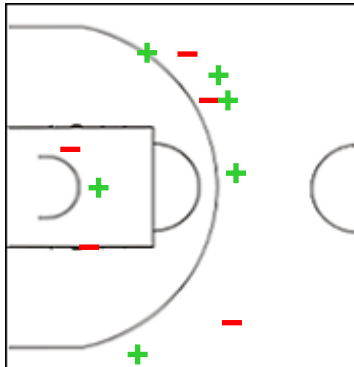
	M / A	%
Fied Goals	5 / 12	42
2 Points	3 / 7	43
3 Points	2 / 5	40
Free Throws	0 / 0	0

2 PLIATKUTE Neda



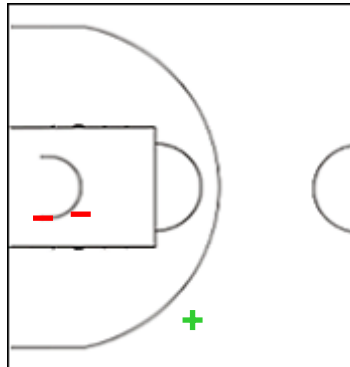
	M / A	%
Fied Goals	2 / 5	40
2 Points	2 / 4	50
3 Points	0 / 1	0
Free Throws	0 / 0	0

3 ANDRUNAVICIUTE Vilte



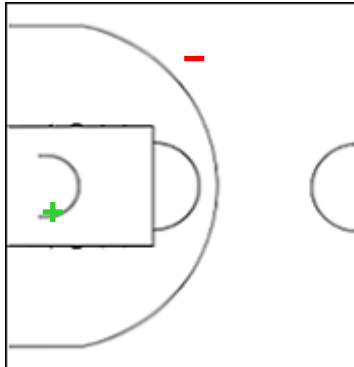
	M / A	%
Fied Goals	6 / 11	55
2 Points	1 / 3	33
3 Points	5 / 8	63
Free Throws	1 / 2	50

4 JOCYTE Juste



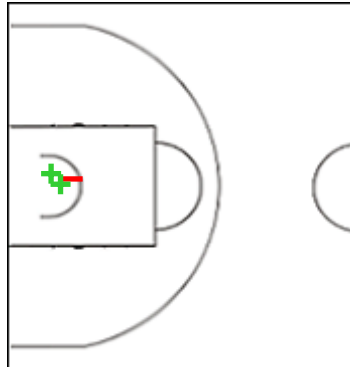
	M / A	%
Fied Goals	1 / 3	33
2 Points	0 / 2	0
3 Points	1 / 1	100
Free Throws	0 / 2	0

5 PUPKEVICIUTE Vivien



	M / A	%
Fied Goals	1 / 2	50
2 Points	1 / 1	100
3 Points	0 / 1	0
Free Throws	0 / 0	0

7 SEDEREVICIUTE Gabriele



	M / A	%
Fied Goals	2 / 3	67
2 Points	2 / 3	67
3 Points	0 / 0	0
Free Throws	0 / 0	0

GLOBAL PARTNERS



Shot Chart

LTU 86 vs 64 EGY

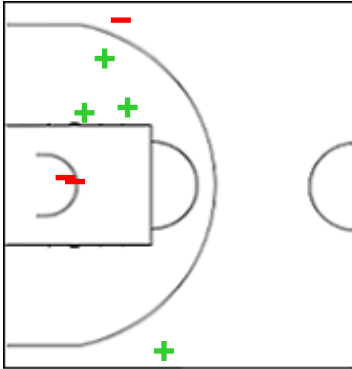
(18-24, 22-13, 28-13, 18-14)

Scoring by 5 min intervals:

	Q1		Q2		Q3		Q4	
LTU	12	18	30	40	54	68	79	86
EGY	9	24	30	37	42	50	52	64

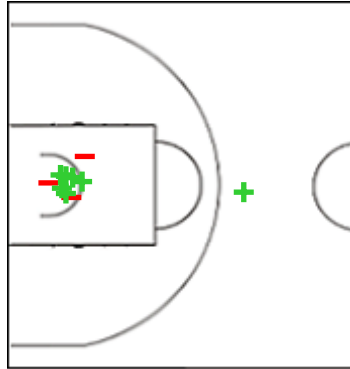
LTU - Lithuania

8 RAULUSAITYTE Gerda



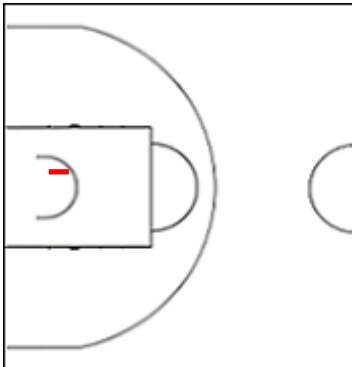
	M / A	%
Fied Goals	4 / 7	57
2 Points	3 / 5	60
3 Points	1 / 2	50
Free Throws	2 / 2	100

11 SIRTAUTAITE Ugne



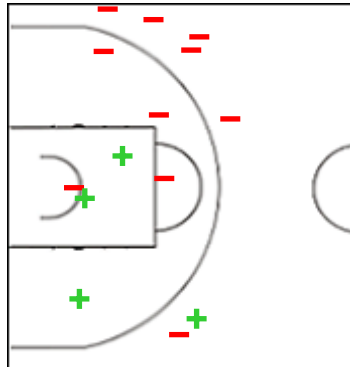
	M / A	%
Fied Goals	7 / 10	70
2 Points	6 / 9	67
3 Points	1 / 1	100
Free Throws	4 / 6	67

21 KRAUJELIS Erika Ieva



	M / A	%
Fied Goals	0 / 1	0
2 Points	0 / 1	0
3 Points	0 / 0	0
Free Throws	0 / 0	0

23 AUGUSTINAITE Rusne



	M / A	%
Fied Goals	4 / 14	29
2 Points	3 / 7	43
3 Points	1 / 7	14
Free Throws	4 / 4	100

GLOBAL PARTNERS



Shot Chart

LTU 86 vs 64 EGY

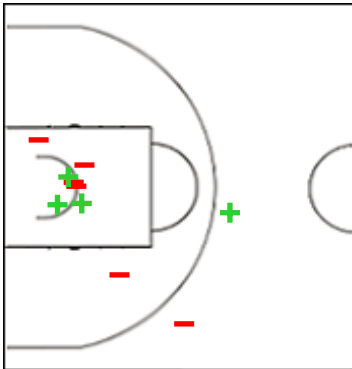
(18-24, 22-13, 28-13, 18-14)

Scoring by 5 min intervals:

	Q1		Q2		Q3		Q4	
LTU	12	18	30	40	54	68	79	86
EGY	9	24	30	37	42	50	52	64

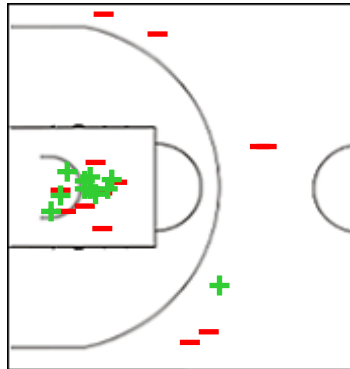
EGY - Egypt

00 SALLMAN Jana



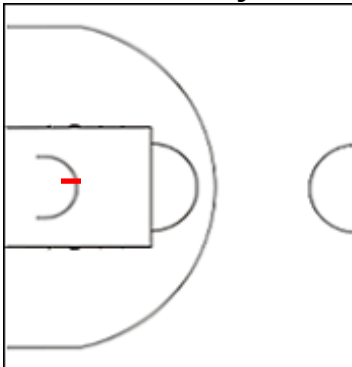
	M / A	%
Fied Goals	4 / 10	40
2 Points	3 / 8	38
3 Points	1 / 2	50
Free Throws	0 / 0	0

8 ELALFY Jana



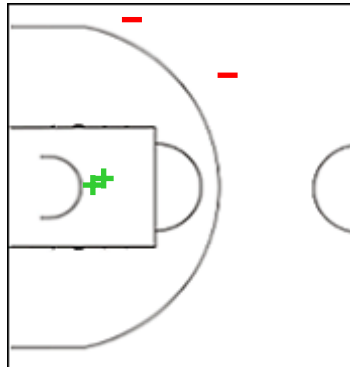
	M / A	%
Fied Goals	11 / 24	46
2 Points	10 / 17	59
3 Points	1 / 7	14
Free Throws	5 / 6	83

9 ELMASRY Jayda Khaled



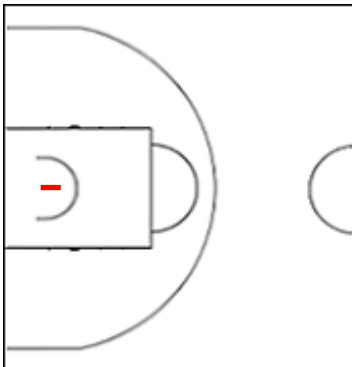
	M / A	%
Fied Goals	0 / 1	0
2 Points	0 / 1	0
3 Points	0 / 0	0
Free Throws	0 / 0	0

12 ELSHEBSHERY Judy



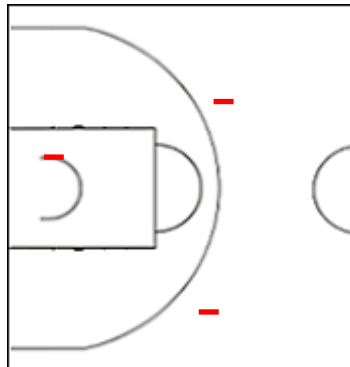
	M / A	%
Fied Goals	2 / 4	50
2 Points	2 / 2	100
3 Points	0 / 2	0
Free Throws	0 / 0	0

15 AHMED Jana



	M / A	%
Fied Goals	0 / 1	0
2 Points	0 / 1	0
3 Points	0 / 0	0
Free Throws	0 / 0	0

22 METWALLY Sarah



	M / A	%
Fied Goals	0 / 3	0
2 Points	0 / 1	0
3 Points	0 / 2	0
Free Throws	0 / 0	0

Shot Chart

LTU 86 vs 64 EGY

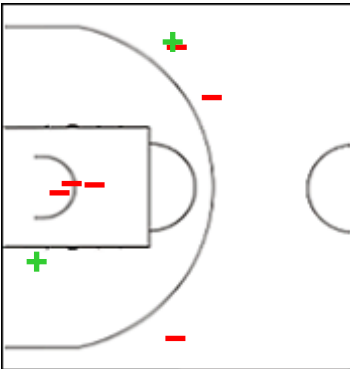
(18-24, 22-13, 28-13, 18-14)

Scoring by 5 min intervals:

	Q1		Q2		Q3		Q4	
LTU	12	18	30	40	54	68	79	86
EGY	9	24	30	37	42	50	52	64

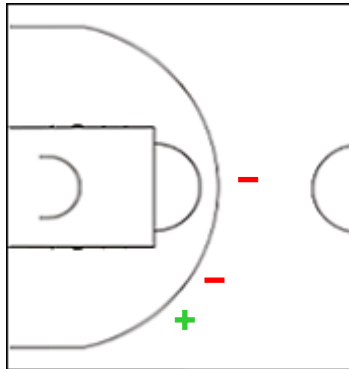
EGY - Egypt

24 HASSAN Aisha Mohamed



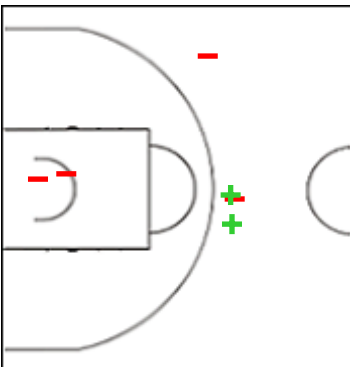
	M / A	%
Fied Goals	2 / 8	25
2 Points	1 / 4	25
3 Points	1 / 4	25
Free Throws	0 / 0	0

32 EBRAHIM Nour



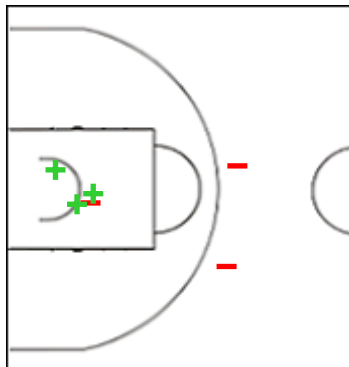
	M / A	%
Fied Goals	1 / 3	33
2 Points	0 / 0	0
3 Points	1 / 3	33
Free Throws	2 / 2	100

33 IBRAHIM Tamara



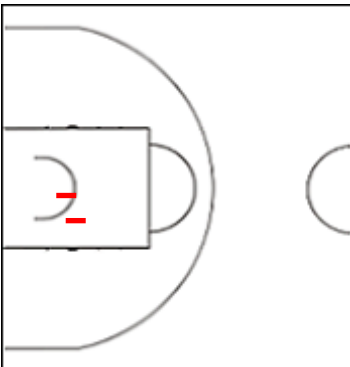
	M / A	%
Fied Goals	2 / 6	33
2 Points	0 / 2	0
3 Points	2 / 4	50
Free Throws	1 / 2	50

34 HASSAN Salma Mostafa



	M / A	%
Fied Goals	3 / 6	50
2 Points	3 / 4	75
3 Points	0 / 2	0
Free Throws	0 / 0	0

35 ABDELAAL Hana



	M / A	%
Fied Goals	0 / 2	0
2 Points	0 / 2	0
3 Points	0 / 0	0
Free Throws	0 / 0	0

GLOBAL PARTNERS





Shot Chart

LTU 86 vs 64 EGY

(18-24, 22-13, 28-13, 18-14)

Scoring by 5 min intervals:

	Q1		Q2		Q3		Q4	
LTU	12	18	30	40	54	68	79	86
EGY	9	24	30	37	42	50	52	64

LTU - Lithuania

EGY - Egypt



	M / A	%
Fied Goals	32 / 68	47
2 Points	21 / 42	50
3 Points	11 / 26	42
Free Throws	11 / 16	69

%	M / A	
37	25 / 68	Fied Goals
45	19 / 42	2 Points
23	6 / 26	3 Points
80	8 / 10	Free Throws

GLOBAL PARTNERS

